

# Catalog

## 29/02/2024

<https://aimiabodyjewelry.com/>

# Table of contents

**4**      **Basic**

**12**     **Segment**

**26**     **Labret**

**36**     **Belly Button**

**41**     **Barbell**

**43**     **Tops**

**63**     **Nose**

**65**     **Dermal**

66

Nipple



## Externally Threaded CZ Ball

Reference : C031

Material: Implant Grade Titanium

Color - Clear, Thickness - 1,2mm (16GA), ball size - 3mm

Color - Clear, Thickness - 1,6mm (14GA), ball size - 4mm



## Externally Threaded Ball

Reference : C029

Material: Implant Grade Titanium

Color - Silver, Thickness - 1,2mm (16GA), ball size - 3mm

Color - Silver, Thickness - 1,6mm (14GA), ball size - 3mm

Color - Silver, Thickness - 1,2mm (16GA), ball size - 4mm

Color - Silver, Thickness - 1,6mm (14GA), ball size - 4mm

Color - Silver, Thickness - 1,6mm (14GA), ball size - 5mm



## Externally Threaded labret

Reference : C011

Material: Implant Grade Titanium

Lenght - 5mm (3/16"), Color - Silver, Thickness - 1,2mm (16GA), ball size - 3mm

Lenght - 6mm (1/4"), Color - Silver, Thickness - 1,2mm (16GA), ball size - 3mm

Lenght - 7mm (9/32"), Color - Silver, Thickness - 1,2mm (16GA), ball size - 3mm

Lenght - 8mm (5/16"), Color - Silver, Thickness - 1,2mm (16GA), ball size - 3mm

Lenght - 10mm (3/8"), Color - Silver, Thickness - 1,2mm (16GA), ball size - 3mm

Lenght - 12mm (1/2"), Color - Silver, Thickness - 1,2mm (16GA), ball size - 3mm

Lenght - 6mm (1/4"), Color - Silver, Thickness - 1,6mm (14GA), ball size - 3mm



## BCR BALL

Reference : C0B9

Material: Implant Grade Titanium

Color - Silver, ball size - 3mm

Color - Silver, ball size - 4mm



## BCR

Reference : C009

Material: Implant Grade Titanium

Lenght - 8mm (5/16"), Color - Silver, Thickness - 1,2mm (16GA), ball size - 3mm  
Lenght - 10mm (3/8") , Color - Silver, Thickness - 1,2mm (16GA), ball size - 3mm  
Lenght - 12mm (1/2"), Color - Silver, Thickness - 1,2mm (16GA), ball size - 3mm  
Lenght - 8mm (5/16"), Color - Silver, Thickness - 1,6mm (14GA), ball size - 3mm  
Lenght - 14mm (9/16"), Color - Silver, Thickness - 1,2mm (16GA), ball size - 4mm  
Lenght - 10mm (3/8") , Color - Silver, Thickness - 1,6mm (14GA), ball size - 4mm  
Lenght - 12mm (1/2"), Color - Silver, Thickness - 1,6mm (14GA), ball size - 4mm  
Lenght - 16mm (5/8"), Color - Silver, Thickness - 1,6mm (14GA), ball size - 4mm



## Externally Threaded Belly Button

Reference : C0B5

Material: Implant Grade Titanium

Lenght - 10mm (3/8") , Color - Silver, Thickness - 1,6mm (14GA), ball size - 4 & 6 mm  
Lenght - 12mm (1/2"), Color - Silver, Thickness - 1,6mm (14GA), ball size - 4 & 6 mm

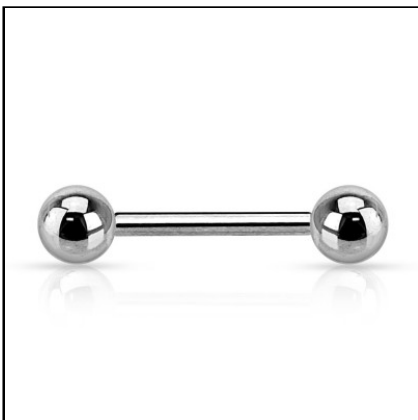


## Externally Threaded Curved Barbell

Reference : C005

Material: Implant Grade Titanium

Lenght - 6mm (1/4"), Color - Silver, Thickness - 1,2mm (16GA), ball size - 3mm  
Lenght - 8mm (5/16"), Color - Silver, Thickness - 1,2mm (16GA), ball size - 3mm  
Lenght - 10mm (3/8") , Color - Silver, Thickness - 1,2mm (16GA), ball size - 3mm  
Lenght - 12mm (1/2"), Color - Silver, Thickness - 1,2mm (16GA), ball size - 3mm  
Lenght - 6mm (1/4"), Color - Silver, Thickness - 1,6mm (14GA), ball size - 3mm  
Lenght - 8mm (5/16"), Color - Silver, Thickness - 1,6mm (14GA), ball size - 3mm  
Lenght - 10mm (3/8") , Color - Silver, Thickness - 1,6mm (14GA), ball size - 4mm  
Lenght - 12mm (1/2"), Color - Silver, Thickness - 1,6mm (14GA), ball size - 4mm



## Externally threaded Barbell with balls

Reference : C001

Material: Implant Grade Titanium

Lenght - 6mm (1/4"), Color - Silver, Thickness - 1,6mm (14GA), ball size - 3mm  
Lenght - 8mm (5/16"), Color - Silver, Thickness - 1,6mm (14GA), ball size - 3mm  
Lenght - 10mm (3/8") , Color - Silver, Thickness - 1,6mm (14GA), ball size - 3mm  
Lenght - 12mm (1/2"), Color - Silver, Thickness - 1,6mm (14GA), ball size - 4mm  
Lenght - 14mm (9/16"), Color - Silver, Thickness - 1,6mm (14GA), ball size - 4mm  
Lenght - 16mm (5/8"), Color - Silver, Thickness - 1,6mm (14GA), ball size - 4mm  
Lenght - 18mm, Color - Silver, Thickness - 1,6mm (14GA), ball size - 5mm



## Surface with tops

Reference : 1010

Material: Implant Grade Titanium Plating: PVD

Lenght - 18mm, Color - Silver, Thickness - 1,6mm (14GA), ball size - 4mm

Lenght - 18mm, Color - PVD Gold 18k, Thickness - 1,6mm (14GA), ball size - 4mm

Lenght - 18mm, Color - PVD Black, Thickness - 1,6mm (14GA), ball size - 4mm



## Nose Screw

Reference : 0168

Material: Implant Grade Titanium Plating: PVD Stone Material: CZ

Lenght - 6mm (1/4"), Color - Clear, Thickness - 0,8mm (20GA), ball size - 2mm

Lenght - 6mm (1/4"), Color - PVD Gold 18k/Clear, Thickness - 0,8mm (20GA), ball size - 2mm

Lenght - 6mm (1/4"), Color - Clear, Thickness - 0,8mm (20GA), ball size - 2.5mm

Lenght - 6mm (1/4"), Color - PVD Gold 18k/Clear, Thickness - 0,8mm (20GA), ball size - 2.5mm

Lenght - 6mm (1/4"), Color - Clear, Thickness - 0,8mm (20GA), ball size - 3mm

Lenght - 6mm (1/4"), Color - PVD Gold 18k/Clear, Thickness - 0,8mm (20GA), ball size - 3mm



## Hoop 2 balls

Reference : 0038

Material: Implant Grade Titanium

Lenght - 6mm (1/4"), Color - Silver, Thickness - 1,2mm (16GA), ball size - 3mm

Lenght - 8mm (5/16"), Color - Silver, Thickness - 1,2mm (16GA), ball size - 3mm

Lenght - 10mm (3/8") , Color - Silver, Thickness - 1,2mm (16GA), ball size - 3mm

Lenght - 12mm (1/2") , Color - Silver, Thickness - 1,2mm (16GA), ball size - 3mm

Lenght - 8mm (5/16"), Color - PVD Gold 18k, Thickness - 1,2mm (16GA), ball size - 3mm

Lenght - 8mm (5/16"), Color - PVD Black, Thickness - 1,2mm (16GA), ball size - 3mm



## Threadless Push Pin Labret

Reference : 0392

Material: Implant Grade Titanium Threadless Pushin

Lenght - 6mm (1/4"), Color - PVD Gold 18k, Thickness - 1,2mm (16GA), Base - 3mm

Lenght - 8mm (5/16"), Color - PVD Gold 18k, Thickness - 1,2mm (16GA), Base - 3mm

Lenght - 10mm (3/8") , Color - PVD Gold 18k, Thickness - 1,2mm (16GA), Base - 3mm

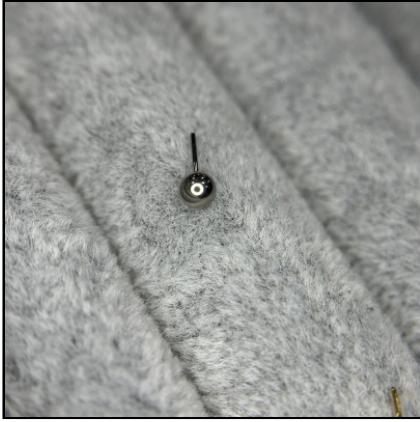
Lenght - 6mm (1/4"), Color - Silver, Thickness - 1,2mm (16GA), Base - 3mm

Lenght - 7mm (9/32"), Color - Silver, Thickness - 1,2mm (16GA), Base - 3mm

Lenght - 8mm (5/16"), Color - Silver, Thickness - 1,2mm (16GA), Base - 3mm

Lenght - 9mm (11/32"), Color - Silver, Thickness - 1,2mm (16GA), Base - 3mm

Lenght - 10mm (3/8") , Color - Silver, Thickness - 1,2mm (16GA), Base - 3mm



## Threadless Ball

Reference : 0398

Material: Implant Grade Titanium

Color - Silver, ball size - 2mm

Color - Silver, ball size - 3mm

Color - Silver, ball size - 4mm

Color - PVD Gold 18k, ball size - 2mm

Color - PVD Gold 18k, ball size - 3mm



## Belly Button

Reference : 0046

Material: Implant Grade Titanium Plating: PVD Stone Material: CZ

Lenght - 10mm (3/8"), Color - Clear, Thickness - 1,6mm (14GA), ball size - 5 & 8 mm

Lenght - 10mm (3/8"), Color - PVD Gold 18k/Clear, Thickness - 1,6mm (14GA), ball size - 5 & 8

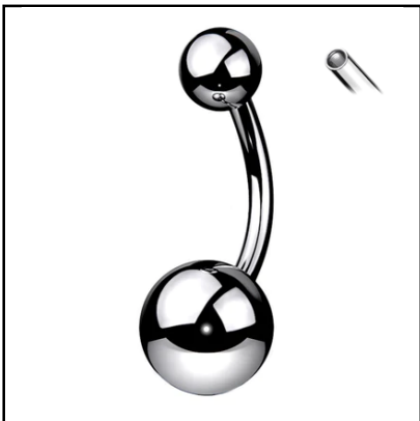
Lenght - 10mm (3/8"), Color - PVD Black/Clear, Thickness - 1,6mm (14GA), ball size - 5 & 8

Lenght - 10mm (3/8"), Color - Clear, Thickness - 1,6mm (14GA), ball size - 4 & 6 mm

Lenght - 8mm (5/16"), Color - Clear, Thickness - 1,6mm (14GA), ball size - 4 & 6 mm

Lenght - 12mm (1/2"), Color - Clear, Thickness - 1,6mm (14GA), ball size - 5 & 8 mm

Lenght - 12mm (1/2"), Color - PVD Gold 18k/Clear, Thickness - 1,6mm (14GA), ball size - 5 &



## Belly Button Ring

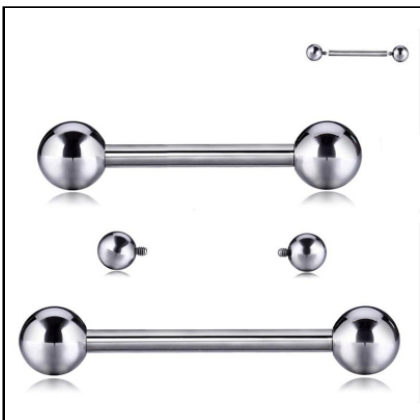
Reference : 0534

Material: Implant Grade Titanium

Lenght - 10mm (3/8"), Color - Silver, Thickness - 1,6mm (14GA), ball size - 5 & 8 mm

Lenght - 12mm (1/2"), Color - Silver, Thickness - 1,6mm (14GA), ball size - 5 & 8 mm

Lenght - 10mm (3/8"), Color - Silver, Thickness - 1,6mm (14GA), ball size - 4 & 6 mm



## Internal Thread Barbell With Balls

Reference : 0039

Material: Implant Grade Titanium

Lenght - 8mm (5/16"), Color - Silver, Thickness - 1,2mm (16GA), ball size - 3mm

Lenght - 10mm (3/8"), Color - Silver, Thickness - 1,2mm (16GA), ball size - 3mm

Lenght - 12mm (1/2"), Color - Silver, Thickness - 1,2mm (16GA), ball size - 3mm

Lenght - 14mm (9/16"), Color - Silver, Thickness - 1,2mm (16GA), ball size - 4mm

Lenght - 12mm (1/2"), Color - Silver, Thickness - 1,6mm (14GA), ball size - 4mm

Lenght - 14mm (9/16"), Color - Silver, Thickness - 1,6mm (14GA), ball size - 4mm



## Bendable Hoop

Reference : 0203

Material: Implant Grade Titanium

Lenght - 6mm (1/4"), Color - PVD Gold 18k, Thickness - 0,8mm (20GA)  
Lenght - 6mm (1/4"), Color - PVD Black, Thickness - 0,8mm (20GA)  
Lenght - 7mm (9/32"), Color - PVD Gold 18k, Thickness - 0,8mm (20GA)  
Lenght - 7mm (9/32"), Color - PVD Black, Thickness - 0,8mm (20GA)  
Lenght - 8mm (5/16"), Color - PVD Gold 18k, Thickness - 0,8mm (20GA)  
Lenght - 8mm (5/16"), Color - PVD Black, Thickness - 0,8mm (20GA)  
Lenght - 10mm (3/8") , Color - PVD Gold 18k, Thickness - 0,8mm (20GA)  
Lenght - 10mm (3/8") , Color - PVD Black, Thickness - 0,8mm (20GA)



## Curved Barbell

Reference : 0037

Material: Implant Grade Titanium 1.2 (16 GA) 1.6 (14GA)

Lenght - 6mm (1/4"), Color - Silver, Thickness - 1,2mm (16GA) , ball size - 3mm  
Lenght - 8mm (5/16"), Color - Silver, Thickness - 1,2mm (16GA) , ball size - 3mm  
Lenght - 10mm (3/8") , Color - Silver, Thickness - 1,2mm (16GA) , ball size - 3mm  
Lenght - 12mm (1/2") , Color - Silver, Thickness - 1,2mm (16GA) , ball size - 3mm  
Lenght - 10mm (3/8") , Color - Silver, Thickness - 1,6mm (14GA) , ball size - 5mm  
Lenght - 12mm (1/2") , Color - Silver, Thickness - 1,6mm (14GA) , ball size - 5mm



## Ball Top Labret 4mm base

Reference : 0041

Material: Implant Grade Titanium 1.2 (16 GA)

Lenght - 6mm (1/4"), Color - Silver, Thickness - 1,2mm (16GA) , ball size - 3mm  
Lenght - 8mm (5/16"), Color - Silver, Thickness - 1,2mm (16GA) , ball size - 3mm  
Lenght - 10mm (3/8") , Color - Silver, Thickness - 1,2mm (16GA) , ball size - 3mm  
Lenght - 12mm (1/2") , Color - Silver, Thickness - 1,2mm (16GA) , ball size - 3mm  
Lenght - 6mm (1/4"), Color - PVD Gold 18k, Thickness - 1,2mm (16GA) , ball size - 3mm  
Lenght - 8mm (5/16"), Color - PVD Gold 18k, Thickness - 1,2mm (16GA) , ball size - 3mm  
Lenght - 10mm (3/8") , Color - PVD Gold 18k, Thickness - 1,2mm (16GA) , ball size - 3mm



## CZ Nose Screw

Reference : 0050

Material: Implant Grade Titanium Stone Material: CZ

Lenght - 6mm (1/4"), Color - Clear, Thickness - 0,8mm (20GA) , ball size - 2mm  
Lenght - 6mm (1/4"), Color - Clear/pink, Thickness - 0,8mm (20GA) , ball size - 2mm  
Lenght - 6mm (1/4"), Color - Clear/Purple, Thickness - 0,8mm (20GA) , ball size - 2mm  
Lenght - 6mm (1/4"), Color - Clear/Aqua, Thickness - 0,8mm (20GA) , ball size - 2mm  
Lenght - 6mm (1/4"), Color - Clear/Blue, Thickness - 0,8mm (20GA) , ball size - 2mm  
Lenght - 6mm (1/4"), Color - PVD Gold 18k/Clear, Thickness - 0,8mm (20GA) , ball size - 2mm



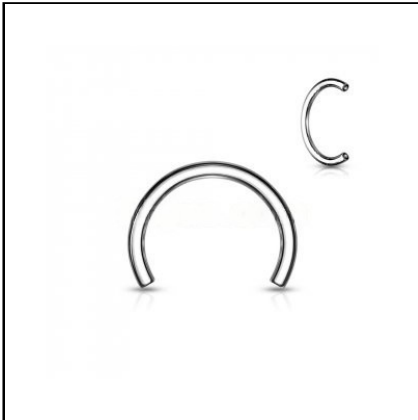


## 4mm Base Labret

Reference : 0185

Material: Implant Grade Titanium Plating: PVD Stone Material: CZ

Lenght - 6mm (1/4"), Color - Clear, Thickness - 1,2mm (16GA), ball size - 2mm  
Lenght - 6mm (1/4"), Color - Clear, Thickness - 1,2mm (16GA), ball size - 2.5mm  
Lenght - 6mm (1/4"), Color - Clear, Thickness - 1,2mm (16GA), ball size - 3mm  
Lenght - 8mm (5/16"), Color - Clear, Thickness - 1,2mm (16GA), ball size - 2mm  
Lenght - 8mm (5/16"), Color - Clear, Thickness - 1,2mm (16GA), ball size - 2.5mm  
Lenght - 8mm (5/16"), Color - Clear, Thickness - 1,2mm (16GA), ball size - 3mm  
Lenght - 6mm (1/4"), Color - PVD Gold 18k/Clear, Thickness - 1,2mm (16GA), ball size - 2mm



## Horseshoe Circular Barbell Pins

Reference : TA-0026

Material: Implant Grade Titanium 1.2 (16 GA) 1.6 (14GA)

Lenght - 6mm (1/4"), Color - Silver, Thickness - 1,2mm (16GA)  
Lenght - 7mm (9/32"), Color - Silver, Thickness - 1,2mm (16GA)  
Lenght - 8mm (5/16"), Color - Silver, Thickness - 1,2mm (16GA)  
Lenght - 9mm (11/32"), Color - Silver, Thickness - 1,2mm (16GA)  
Lenght - 10mm (3/8"), Color - Silver, Thickness - 1,2mm (16GA)  
Lenght - 12mm (1/2"), Color - Silver, Thickness - 1,2mm (16GA)

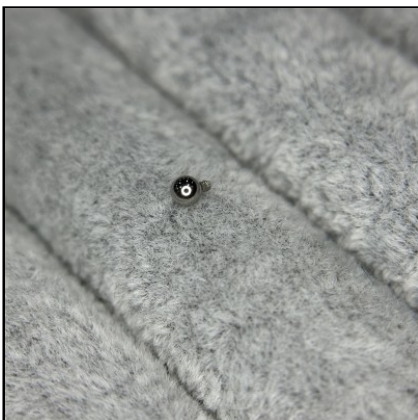


## 3 Hole Dermal Anchor

Reference : TA-0010

Material: Implant Grade Titanium 1.2 (16 GA) 1.6 (14GA)

Thickness - 1,2mm (16GA), Height - 2.5mm  
Thickness - 1,2mm (16GA), Height - 3mm  
Thickness - 1,6mm (14GA), Height - 2.5mm  
Thickness - 1,6mm (14GA), Height - 3mm



## Internal Thread Balls

Reference : TA-0011

Material: Implant Grade Titanium 1.2 (16 GA) 1.6 (14GA)

Color - Silver, Thickness - 1,2mm (16GA), ball size - 2mm  
Color - Silver, Thickness - 1,2mm (16GA), ball size - 2.5mm  
Color - Silver, Thickness - 1,2mm (16GA), ball size - 3mm  
Color - Silver, Thickness - 1,2mm (16GA), ball size - 4mm  
Color - Silver, Thickness - 1,2mm (16GA), ball size - 5mm  
Color - Silver, Thickness - 1,6mm (14GA), ball size - 3mm  
Color - Silver, Thickness - 1,6mm (14GA), ball size - 4mm



## Dome Nose Screw

Reference : 0273

Material: Implant Grade Titanium 2mm top

Lenght - 6mm (1/4"), Color - PVD Gold 18k, Thickness - 0,8mm (20GA)

Lenght - 6mm (1/4"), Color - Silver, Thickness - 0,8mm (20GA)

Lenght - 6mm (1/4"), Color - PVD Black, Thickness - 0,8mm (20GA)



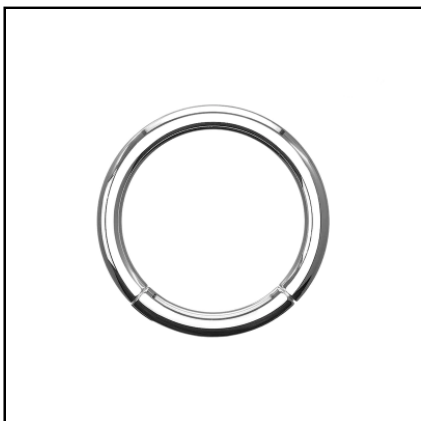
## Ball Nose Screw

Reference : 0272

Material: Implant Grade Titanium 2mm ball

Lenght - 6mm (1/4"), Color - PVD Gold 18k, Thickness - 0,8mm (20GA)

Lenght - 6mm (1/4"), Color - Silver, Thickness - 0,8mm (20GA)



## Hinged Segment Ring

Reference : 0058

Material: Implant Grade Titanium 0.8 mm (20 GA) 1 mm (18 GA) 1.2 mm (16 GA)

Lenght - 6mm (1/4"), Color - Silver, Thickness - 1,2mm (16GA)

Lenght - 7mm (9/32"), Color - Silver, Thickness - 1,2mm (16GA)

Lenght - 8mm (5/16"), Color - Silver, Thickness - 1,2mm (16GA)

Lenght - 9mm (11/32"), Color - Silver, Thickness - 1,2mm (16GA)

Lenght - 10mm (3/8"), Color - Silver, Thickness - 1,2mm (16GA)

Lenght - 11mm (7/16"), Color - Silver, Thickness - 1,2mm (16GA)



## Flat Bezel Set Crystal Top

Reference : TA-0015

Material: Implant Grade Titanium Stone Material: CZ

Color - Clear, Thickness - 1,2mm (16GA), ball size - 3mm

Color - Clear, Thickness - 1,6mm (14GA), ball size - 3mm

Color - Clear, Thickness - 1,2mm (16GA), ball size - 4mm

Color - Clear, Thickness - 1,6mm (14GA), ball size - 4mm

Color - Clear, Thickness - 1,2mm (16GA), ball size - 5mm

Color - Clear, Thickness - 1,6mm (14GA), ball size - 5mm

Color - Clear/AB, Thickness - 1,2mm (16GA), ball size - 3mm



## 3mm Base Labret

Reference : TA-0029

Material: Implant Grade Titanium 1mm (18 GA) 1.2 (16 GA) Please note this item is Internally Threaded. Not compatible with the threadless jewelry parts

Lenght - 6mm (1/4"), Color - PVD Gold 18k, Thickness - 1,2mm (16GA)

Lenght - 8mm (5/16"), Color - PVD Gold 18k, Thickness - 1,2mm (16GA)

Lenght - 10mm (3/8") , Color - PVD Gold 18k, Thickness - 1,2mm (16GA)

Lenght - 12mm (1/2") , Color - PVD Gold 18k, Thickness - 1,2mm (16GA)

Lenght - 6mm (1/4") , Color - PVD Black, Thickness - 1,2mm (16GA)

Lenght - 8mm (5/16") , Color - PVD Black, Thickness - 1,2mm (16GA)



## Externally Threaded hoop 2 ball

Reference : C015

Material: Implant Grade Titanium

Lenght - 6mm (1/4"), Color - Silver, Thickness - 1,2mm (16GA), ball size - 3mm  
Lenght - 8mm (5/16"), Color - Silver, Thickness - 1,2mm (16GA), ball size - 3mm  
Lenght - 10mm (3/8") , Color - Silver, Thickness - 1,2mm (16GA), ball size - 3mm  
Lenght - 12mm (1/2") , Color - Silver, Thickness - 1,2mm (16GA), ball size - 3mm  
Lenght - 8mm (5/16") , Color - Silver, Thickness - 1,6mm (14GA), ball size - 3mm  
Lenght - 10mm (3/8") , Color - Silver, Thickness - 1,6mm (14GA), ball size - 3mm  
Lenght - 12mm (1/2") , Color - Silver, Thickness - 1,6mm (14GA), ball size - 4mm



## BCR

Reference : C009

Material: Implant Grade Titanium

Lenght - 8mm (5/16") , Color - Silver, Thickness - 1,2mm (16GA), ball size - 3mm  
Lenght - 10mm (3/8") , Color - Silver, Thickness - 1,2mm (16GA), ball size - 3mm  
Lenght - 12mm (1/2") , Color - Silver, Thickness - 1,2mm (16GA), ball size - 3mm  
Lenght - 8mm (5/16") , Color - Silver, Thickness - 1,6mm (14GA), ball size - 3mm  
Lenght - 14mm (9/16") , Color - Silver, Thickness - 1,2mm (16GA), ball size - 4mm  
Lenght - 10mm (3/8") , Color - Silver, Thickness - 1,6mm (14GA), ball size - 4mm  
Lenght - 12mm (1/2") , Color - Silver, Thickness - 1,6mm (14GA), ball size - 4mm  
Lenght - 16mm (5/8") , Color - Silver, Thickness - 1,6mm (14GA), ball size - 4mm



## CZ Earring 2mm

Reference : 1298

Material: Implant Grade Titanium Stone Material: CZ

Lenght - 8mm (5/16") , Color - Clear, Thickness - 1,2mm (16GA)  
Lenght - 8mm (5/16") , Color - PVD Gold 18k/Clear, Thickness - 1,2mm (16GA)  
Lenght - 10mm (3/8") , Color - Clear, Thickness - 1,2mm (16GA)  
Lenght - 10mm (3/8") , Color - PVD Gold 18k/Clear, Thickness - 1,2mm (16GA)



## Earring 2mm

Reference : 1299

Material: Implant Grade Titanium

Lenght - 8mm (5/16") , Color - Silver, Thickness - 1,2mm (16GA)  
Lenght - 8mm (5/16") , Color - PVD Gold 18k, Thickness - 1,2mm (16GA)  
Lenght - 10mm (3/8") , Color - Silver, Thickness - 1,2mm (16GA)  
Lenght - 10mm (3/8") , Color - PVD Gold 18k, Thickness - 1,2mm (16GA)  
Lenght - 12mm (1/2") , Color - Silver, Thickness - 1,2mm (16GA)  
Lenght - 12mm (1/2") , Color - PVD Gold 18k, Thickness - 1,2mm (16GA)



## 3 lines hoop

Reference : 1321

Material: Implant Grade Titanium Stone Material: CZ

Lenght - 8mm (5/16"), Color - Silver, Thickness - 1,2mm (16GA)



## Hoop Mix 11 CZ

Reference : 1395

Material: Implant Grade Titanium Stone Material: CZ

Lenght - 8mm (5/16"), Color - Clear, Thickness - 1,2mm (16GA)



## Paved Segment With Prong

Reference : 1370

Material: Implant Grade Titanium Stone Material: CZ

Lenght - 8mm (5/16"), Color - Clear, Thickness - 1,2mm (16GA)



## Paved Segment With Marquise

Reference : 1368

Material: Implant Grade Titanium Stone Material: CZ

Lenght - 8mm (5/16"), Color - Clear, Thickness - 1,2mm (16GA)



## Lots of CZ Covered Face

Reference : 1322

Material: Implant Grade Titanium Stone Material: CZ

Lenght - 8mm (5/16"), Color - Clear, Thickness - 1,2mm (16GA)



## 2 Rectangles CZ and Round CZ Ring

Reference : 1326

Material: Implant Grade Titanium Stone Material: CZ

Lenght - 8mm (5/16"), Color - Clear, Thickness - 1,2mm (16GA)



## Segment CZ Marquise Opal

Reference : 0694

Material: Implant Grade Titanium Plating: PVD Stone Material: CZ

Lenght - 8mm (5/16"), Color - White (OP #17), Thickness - 1,2mm (16GA)

Lenght - 8mm (5/16"), Color - Blue (OP #05), Thickness - 1,2mm (16GA)

Lenght - 10mm (3/8") , Color - White (OP #17), Thickness - 1,2mm (16GA)

Lenght - 10mm (3/8") , Color - Blue (OP #05), Thickness - 1,2mm (16GA)



## Segment CZ Square cut

Reference : 0582

Material: Implant Grade Titanium Plating: PVD Stone Material: CZ

Lenght - 8mm (5/16"), Color - Clear, Thickness - 1,2mm (16GA)

Lenght - 8mm (5/16"), Color - PVD Gold 18k/Clear, Thickness - 1,2mm (16GA)

Lenght - 10mm (3/8") , Color - Clear, Thickness - 1,2mm (16GA)

Lenght - 10mm (3/8") , Color - PVD Gold 18k/Clear, Thickness - 1,2mm (16GA)



## Square Cut Segment

Reference : 0494

Material: Implant Grade Titanium Plating: PVD Stone Material: CZ

Lenght - 8mm (5/16" ), Color - Silver, Thickness - 1,2mm (16GA)

Lenght - 8mm (5/16" ), Color - PVD Gold 18k, Thickness - 1,2mm (16GA)

Lenght - 10mm (3/8" ), Color - Silver, Thickness - 1,2mm (16GA)

Lenght - 10mm (3/8" ), Color - PVD Gold 18k, Thickness - 1,2mm (16GA)



## Segment CZ Square

Reference : 0468

Material: Implant Grade Titanium Plating: PVD Stone Material: CZ

Lenght - 8mm (5/16" ), Color - Clear, Thickness - 1,2mm (16GA)

Lenght - 8mm (5/16" ), Color - PVD Gold 18k/Clear, Thickness - 1,2mm (16GA)

Lenght - 10mm (3/8" ), Color - Clear, Thickness - 1,2mm (16GA)

Lenght - 10mm (3/8" ), Color - PVD Gold 18k/Clear, Thickness - 1,2mm (16GA)



## Segment CZ balls

Reference : 0463

Material: Implant Grade Titanium Plating: PVD Stone Material: CZ

Lenght - 8mm (5/16" ), Color - Clear, Thickness - 1,2mm (16GA)

Lenght - 8mm (5/16" ), Color - PVD Gold 18k/Clear, Thickness - 1,2mm (16GA)

Lenght - 10mm (3/8" ), Color - Clear, Thickness - 1,2mm (16GA)

Lenght - 10mm (3/8" ), Color - PVD Gold 18k/Clear, Thickness - 1,2mm (16GA)



## Oblong Segment

Reference : 0366

Material: Implant Grade Titanium Plating: PVD Stone Material: CZ

Lenght - 8mm (5/16" ), Color - Clear, Thickness - 1,2mm (16GA)

Lenght - 8mm (5/16" ), Color - PVD Gold 18k/Clear, Thickness - 1,2mm (16GA)

Lenght - 10mm (3/8" ), Color - Clear, Thickness - 1,2mm (16GA)

Lenght - 10mm (3/8" ), Color - PVD Gold 18k/Clear, Thickness - 1,2mm (16GA)

Lenght - 7mm (9/32" ), Color - Clear, Thickness - 1,2mm (16GA)



## Prong Set Marquise CZ Hinged Segment Ring ...

Reference : 1244

Material: Implant Grade Titanium Plating: PVD Stone Material: CZ

Lenght - 8mm (5/16"), Color - Clear, Thickness - 1,2mm (16GA)



## CZ Paved Side Hinged Segment Ring With Cha...

Reference : 1248

Material: Implant Grade Titanium Plating: PVD Stone Material: CZ

Lenght - 8mm (5/16"), Color - Clear, Thickness - 1,2mm (16GA)

Lenght - 8mm (5/16"), Color - PVD Gold 18k/Clear, Thickness - 1,2mm (16GA)



## CZ Paved Face Hinged Segment Ring With 2 C...

Reference : 1246

Material: Implant Grade Titanium Plating: PVD Stone Material: CZ

Lenght - 8mm (5/16"), Color - Clear, Thickness - 1,2mm (16GA)



## Hinged Segment Ring With Chain Dangle

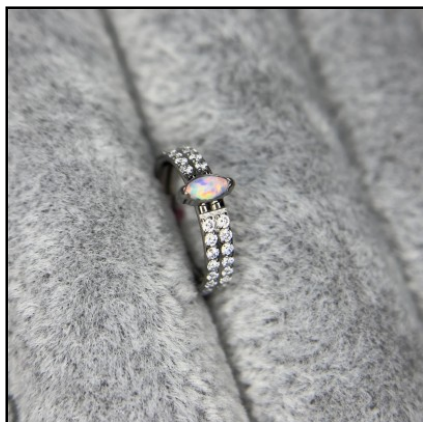
Reference : 1247

Material: Implant Grade Titanium Plating: PVD Stone Material: CZ

Lenght - 8mm (5/16"), Color - Silver, Thickness - 1,2mm (16GA)

Lenght - 8mm (5/16"), Color - PVD Gold 18k, Thickness - 1,2mm (16GA)





## 2 Rows CZ Stone Pave Side With Opal Marquis...

Reference : 0732

Material: Implant Grade Titanium Plating: PVD Stone Material: CZ & Opal

Lenght - 8mm (5/16"), Color - OP17+Clear, Thickness - 1,2mm (16GA)

Lenght - 10mm (3/8") , Color - OP17+Clear, Thickness - 1,2mm (16GA)



## CZ 3 Sides Segment Ring

Reference : 0825

Material: Implant Grade Titanium Plating: PVD Stone Material: CZ

Lenght - 8mm (5/16") , Color - Clear, Thickness - 1,2mm (16GA)

Lenght - 10mm (3/8") , Color - Clear, Thickness - 1,2mm (16GA)



## Segment Ring Hoop With Balls

Reference : 1030

Material: Implant Grade Titanium

Lenght - 8mm (5/16") , Color - Silver, Thickness - 1,2mm (16GA)

Lenght - 10mm (3/8") , Color - Silver, Thickness - 1,2mm (16GA)

Lenght - 8mm (5/16") , Color - PVD Gold 18k, Thickness - 1,2mm (16GA)

Lenght - 10mm (3/8") , Color - PVD Gold 18k, Thickness - 1,2mm (16GA)



## CZ Pave Side Cross Design Segment Ring

Reference : 0537

Material: Implant Grade Titanium Stone Material: CZ

Lenght - 8mm (5/16") , Color - Clear, Thickness - 1,2mm (16GA)

Lenght - 8mm (5/16") , Color - PVD Gold 18k/Clear, Thickness - 1,2mm (16GA)

Lenght - 10mm (3/8") , Color - Clear, Thickness - 1,2mm (16GA)

Lenght - 10mm (3/8") , Color - PVD Gold 18k/Clear, Thickness - 1,2mm (16GA)



## CZ Paved Hinged Segment Ring Hoop With 15 ...

Reference : 0991

Material: Implant Grade Titanium Stone Material: CZ

Lenght - 8mm (5/16"), Color - Clear, Thickness - 1,2mm (16GA)

Lenght - 8mm (5/16"), Color - PVD Gold 18k/Clear, Thickness - 1,2mm (16GA)



## Square Cut Face Segment Ring

Reference : 0495

Material: Implant Grade Titanium Plating: PVD

Lenght - 8mm (5/16"), Color - Silver, Thickness - 1,2mm (16GA)

Lenght - 8mm (5/16"), Color - PVD Gold 18k, Thickness - 1,2mm (16GA)

Lenght - 10mm (3/8") , Color - Silver, Thickness - 1,2mm (16GA)

Lenght - 10mm (3/8") , Color - PVD Gold 18k, Thickness - 1,2mm (16GA)



## Double CZ Pave Segment

Reference : 1031

Material: Implant Grade Titanium Plating: PVD Stone Material: CZ

Lenght - 8mm (5/16"), Color - Clear, Thickness - 1,2mm (16GA)

Lenght - 10mm (3/8") , Color - Clear, Thickness - 1,2mm (16GA)



## Hinged Segment Hoop Ring Snake

Reference : 0583

Material: Implant Grade Titanium Plating: PVD

Lenght - 8mm (5/16"), Color - Silver, Thickness - 1,2mm (16GA)

Lenght - 8mm (5/16"), Color - PVD Gold 18k, Thickness - 1,2mm (16GA)

Lenght - 10mm (3/8") , Color - Silver, Thickness - 1,2mm (16GA)

Lenght - 10mm (3/8") , Color - PVD Gold 18k, Thickness - 1,2mm (16GA)

Lenght - 8mm (5/16"), Color - PVD Rose Gold, Thickness - 1,2mm (16GA)



## Shape Segment Ring With CZ Pave Face

Reference : 0493

Material: Implant Grade Titanium Plating: PVD Stone Material: CZ

Lenght - 8mm (5/16" ), Color - Clear, Thickness - 1,2mm (16GA)

Lenght - 8mm (5/16" ), Color - PVD Gold 18k/Clear, Thickness - 1,2mm (16GA)

Lenght - 10mm (3/8" ), Color - Clear, Thickness - 1,2mm (16GA)

Lenght - 10mm (3/8" ), Color - PVD Gold 18k/Clear, Thickness - 1,2mm (16GA)



## Clicker Segment Hoop Ring CZ Pave Side

Reference : 0728

Material: Implant Grade Titanium Plating: PVD Stone Material: CZ

Lenght - 8mm (5/16" ), Color - Clear, Thickness - 0.8mm/1,2mm

Lenght - 8mm (5/16" ), Color - PVD Gold 18k/Clear, Thickness - 0.8mm/1,2mm



## CZ Paved Face Shape Segment Ring

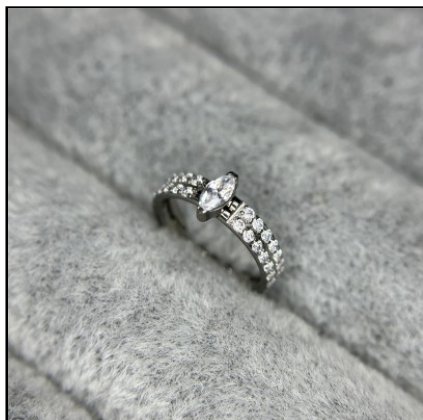
Reference : 0561

Material: Implant Grade Titanium Plating: PVD Stone Material: CZ

Lenght - 8mm (5/16" ), Color - Clear, Thickness - 1,2mm (16GA)

Lenght - 10mm (3/8" ), Color - Clear, Thickness - 1,2mm (16GA)

Lenght - 8mm (5/16" ), Color - PVD Gold 18k/Clear, Thickness - 1,2mm (16GA)



## Hinged Segment with marquise stone center

Reference : 0695

Material: Implant Grade Titanium Stone Material: CZ

Lenght - 10mm (3/8" ), Color - Clear, Thickness - 1,2mm (16GA)

Lenght - 8mm (5/16" ), Color - PVD Gold 18k/Clear, Thickness - 1,2mm (16GA)

Lenght - 8mm (5/16" ), Color - Clear, Thickness - 1,2mm (16GA)

Lenght - 10mm (3/8" ), Color - PVD Gold 18k/Clear, Thickness - 1,2mm (16GA)



## Segment Balls

Reference : 0156

Material: Implant Grade Titanium

Lenght - 8mm (5/16"), Color - Silver, Thickness - 1,2mm (16GA)

Lenght - 10mm (3/8") , Color - Silver, Thickness - 1,2mm (16GA)

Lenght - 8mm (5/16") , Color - PVD Gold 18k, Thickness - 1,2mm (16GA)

Lenght - 10mm (3/8") , Color - PVD Gold 18k/Clear, Thickness - 1,2mm (16GA)



## Marquise Stone with cz Segment

Reference : 0693

Material: Implant Grade Titanium Plating: PVD Stone Material: CZ

Lenght - 8mm (5/16") , Color - Clear, Thickness - 1,2mm (16GA)

Lenght - 10mm (3/8") , Color - Clear, Thickness - 1,2mm (16GA)

Lenght - 12mm (1/2") , Color - Clear, Thickness - 1,2mm (16GA)

Lenght - 8mm (5/16") , Color - PVD Gold 18k/Clear, Thickness - 1,2mm (16GA)

Lenght - 10mm (3/8") , Color - PVD Gold 18k/Clear, Thickness - 1,2mm (16GA)

Lenght - 12mm (1/2") , Color - PVD Gold 18k/Clear, Thickness - 1,2mm (16GA)



## Opal Stone Center Hinged Segment

Reference : 0692

Material: Implant Grade Titanium Stone Material: Synthetic Opal &mp; CZ

Lenght - 8mm (5/16") , Color - White (OP #17), Thickness - 1,2mm (16GA)

Lenght - 8mm (5/16") , Color - Blue (OP #05), Thickness - 1,2mm (16GA)

Lenght - 10mm (3/8") , Color - White (OP #17), Thickness - 1,2mm (16GA)

Lenght - 10mm (3/8") , Color - Blue (OP #05), Thickness - 1,2mm (16GA)



## Stone Center Hinged Segment Hoop

Reference : 0691

Material: Implant Grade Titanium Stone Material: CZ

Lenght - 8mm (5/16") , Color - Clear, Thickness - 1,2mm (16GA)

Lenght - 8mm (5/16") , Color - PVD Gold 18k/Clear, Thickness - 1,2mm (16GA)

Lenght - 10mm (3/8") , Color - Clear, Thickness - 1,2mm (16GA)

Lenght - 10mm (3/8") , Color - PVD Gold 18k/Clear, Thickness - 1,2mm (16GA)



## With 3 Fans Out Design Side Facing Hinged Se...

Reference : 0471

Material: Implant Grade Titanium

Lenght - 8mm (5/16" ) , Color - Silver, Thickness - 1,2mm (16GA)

Lenght - 10mm (3/8" ) , Color - Silver, Thickness - 1,2mm (16GA)



## 3 Tier Stacked Hinged Clearicker Ring

Reference : 0367

Material: Implant Grade Titanium

Lenght - 8mm (5/16" ) , Color - Silver, Thickness - 1,2mm (16GA)

Lenght - 10mm (3/8" ) , Color - Silver, Thickness - 1,2mm (16GA)

Lenght - 8mm (5/16" ) , Color - PVD Gold 18k, Thickness - 1,2mm (16GA)

Lenght - 10mm (3/8" ) , Color - PVD Gold 18k, Thickness - 1,2mm (16GA)



## Hinged Segment Hoop Ring With Set CZ Pave ...

Reference : 0483

Material: Implant Grade Titanium Stone Material: CZ

Lenght - 8mm (5/16" ) , Color - Clear, Thickness - 1,2mm (16GA)

Lenght - 8mm (5/16" ) , Color - PVD Gold 18k/Clear, Thickness - 1,2mm (16GA)

Lenght - 10mm (3/8" ) , Color - Clear, Thickness - 1,2mm (16GA)

Lenght - 10mm (3/8" ) , Color - PVD Gold 18k/Clear, Thickness - 1,2mm (16GA)



## 3 Fans Out Design Side Facing with CZ Pave Hi...

Reference : 0470

Material: Implant Grade Titanium Stone Material: CZ

Lenght - 8mm (5/16" ) , Color - Clear, Thickness - 1,2mm (16GA)

Lenght - 8mm (5/16" ) , Color - PVD Gold 18k/Clear, Thickness - 1,2mm (16GA)

Lenght - 10mm (3/8" ) , Color - Clear, Thickness - 1,2mm (16GA)

Lenght - 10mm (3/8" ) , Color - PVD Gold 18k/Clear, Thickness - 1,2mm (16GA)



## Hinged Segment Rings With 3 Rows CZ Pave S...

Reference : 0465

Material: Implant Grade Titanium Stone Material: CZ

Lenght - 8mm (5/16"), Color - Clear, Thickness - 1,2mm (16GA)

Lenght - 10mm (3/8") , Color - Clear, Thickness - 1,2mm (16GA)

Lenght - 8mm (5/16") , Color - PVD Gold 18k/Clear, Thickness - 1,2mm (16GA)

Lenght - 10mm (3/8") , Color - PVD Gold 18k/Clear, Thickness - 1,2mm (16GA)



## Hinged Front Pave CZ Segment Rings with Ball...

Reference : 0462

Material: Implant Grade Titanium Stone Material: CZ

Lenght - 8mm (5/16") , Color - Clear, Thickness - 1,2mm (16GA)

Lenght - 8mm (5/16") , Color - PVD Gold 18k/Clear, Thickness - 1,2mm (16GA)

Lenght - 10mm (3/8") , Color - Clear, Thickness - 1,2mm (16GA)

Lenght - 10mm (3/8") , Color - PVD Gold 18k/Clear, Thickness - 1,2mm (16GA)



## Hinged Segment Hoop Ring With double Facin...

Reference : 0357

Material: Implant Grade Titanium Stone Material: CZ

Lenght - 8mm (5/16") , Color - Clear, Thickness - 1,2mm (16GA)

Lenght - 8mm (5/16") , Color - PVD Gold 18k/Clear, Thickness - 1,2mm (16GA)



## Hinged Segment Hoop Ring With Facing Pave ...

Reference : 0356

Material: Implant Grade Titanium Stone Material: CZ

Lenght - 6mm (1/4") , Color - Clear, Thickness - 1,2mm (16GA)

Lenght - 8mm (5/16") , Color - Clear, Thickness - 1,2mm (16GA)

Lenght - 10mm (3/8") , Color - Clear, Thickness - 1,2mm (16GA)

Lenght - 8mm (5/16") , Color - Clear/Aqua, Thickness - 1,2mm (16GA)

Lenght - 8mm (5/16") , Color - Clear/Purple, Thickness - 1,2mm (16GA)

Lenght - 8mm (5/16") , Color - Clear/pink, Thickness - 1,2mm (16GA)

Lenght - 10mm (3/8") , Color - Clear/Aqua, Thickness - 1,2mm (16GA)



## Hinged Segment Hoop With CZ Pave

Reference : 0355

Material: Implant Grade Titanium Stone Material: CZ

Lenght - 6mm (1/4"), Color - Clear, Thickness - 1,2mm (16GA)  
Lenght - 8mm (5/16"), Color - Clear, Thickness - 1,2mm (16GA)  
Lenght - 10mm (3/8") , Color - Clear, Thickness - 1,2mm (16GA)  
Lenght - 12mm (1/2") , Color - Clear, Thickness - 1,2mm (16GA)  
Lenght - 8mm (5/16") , Color - Clear, Thickness - 1mm (18GA)  
Lenght - 8mm (5/16") , Color - Clear/pink, Thickness - 1,2mm (16GA)  
Lenght - 8mm (5/16") , Color - Clear/AB, Thickness - 1,2mm (16GA)

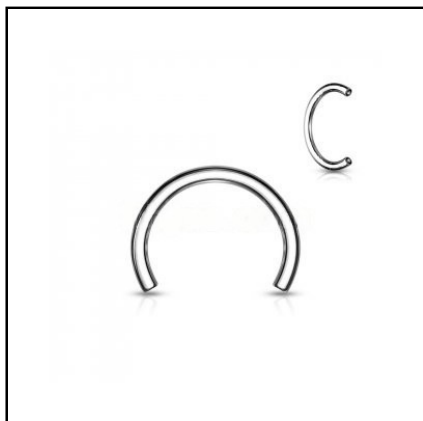


## Bendable Hoop

Reference : 0203

Material: Implant Grade Titanium

Lenght - 6mm (1/4") , Color - PVD Gold 18k, Thickness - 0,8mm (20GA)  
Lenght - 6mm (1/4") , Color - PVD Black, Thickness - 0,8mm (20GA)  
Lenght - 7mm (9/32") , Color - PVD Gold 18k, Thickness - 0,8mm (20GA)  
Lenght - 7mm (9/32") , Color - PVD Black, Thickness - 0,8mm (20GA)  
Lenght - 8mm (5/16") , Color - PVD Gold 18k, Thickness - 0,8mm (20GA)  
Lenght - 8mm (5/16") , Color - PVD Black, Thickness - 0,8mm (20GA)  
Lenght - 10mm (3/8") , Color - PVD Gold 18k, Thickness - 0,8mm (20GA)  
Lenght - 10mm (3/8") , Color - PVD Black, Thickness - 0,8mm (20GA)



## Horseshoe Circular Barbell Pins

Reference : TA-0026

Material: Implant Grade Titanium 1.2 (16 GA) 1.6 (14GA)

Lenght - 6mm (1/4") , Color - Silver, Thickness - 1,2mm (16GA)  
Lenght - 7mm (9/32") , Color - Silver, Thickness - 1,2mm (16GA)  
Lenght - 8mm (5/16") , Color - Silver, Thickness - 1,2mm (16GA)  
Lenght - 9mm (11/32") , Color - Silver, Thickness - 1,2mm (16GA)  
Lenght - 10mm (3/8") , Color - Silver, Thickness - 1,2mm (16GA)  
Lenght - 12mm (1/2") , Color - Silver, Thickness - 1,2mm (16GA)



## Hinged Segment Double Hoop Ring Lined With...

Reference : 0469

Material: Implant Grade Titanium Plating: PVD Stone Material: CZ

Lenght - 8mm (5/16") , Color - Clear, Thickness - 1,2mm (16GA)  
Lenght - 10mm (3/8") , Color - Clear, Thickness - 1,2mm (16GA)  
Lenght - 8mm (5/16") , Color - PVD Gold 18k/Clear, Thickness - 1,2mm (16GA)  
Lenght - 10mm (3/8") , Color - PVD Gold 18k/Clear, Thickness - 1,2mm (16GA)  
Lenght - 8mm (5/16") , Color - PVD Rose Gold/Clear, Thickness - 1,2mm (16GA)  
Lenght - 10mm (3/8") , Color - PVD Rose Gold/Clear, Thickness - 1,2mm (16GA)



## Hinged Segment Hoop Ring With Double Lined...

Reference : 0464

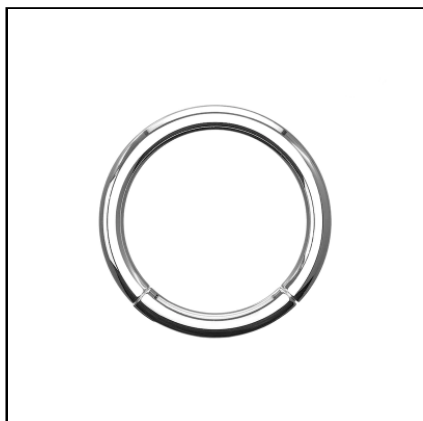
Material: Implant Grade Titanium Plating: PVD Stone Material: CZ

Lenght - 8mm (5/16"), Color - Clear, Thickness - 1,2mm (16GA)

Lenght - 10mm (3/8") , Color - Clear, Thickness - 1,2mm (16GA)

Lenght - 8mm (5/16"), Color - PVD Gold 18k/Clear, Thickness - 1,2mm (16GA)

Lenght - 10mm (3/8") , Color - PVD Gold 18k/Clear, Thickness - 1,2mm (16GA)



## Hinged Segment Ring

Reference : 0058

Material: Implant Grade Titanium 0.8 mm (20 GA) 1 mm (18 GA) 1.2 mm (16 GA)

Lenght - 6mm (1/4") , Color - Silver, Thickness - 1,2mm (16GA)

Lenght - 7mm (9/32") , Color - Silver, Thickness - 1,2mm (16GA)

Lenght - 8mm (5/16") , Color - Silver, Thickness - 1,2mm (16GA)

Lenght - 9mm (11/32") , Color - Silver, Thickness - 1,2mm (16GA)

Lenght - 10mm (3/8") , Color - Silver, Thickness - 1,2mm (16GA)

Lenght - 11mm (7/16") , Color - Silver, Thickness - 1,2mm (16GA)



## Hinged Segment Hoop Ring With Opal Lined Fr...

Reference : 0361

Material: Implant Grade Titanium Stone Material: Synthetic Opal

Lenght - 8mm (5/16"), Color - White (OP #17), Thickness - 1,2mm (16GA)

Lenght - 8mm (5/16"), Color - Blue (OP #05), Thickness - 1,2mm (16GA)

Lenght - 8mm (5/16"), Color - Rose (OP #22), Thickness - 1,2mm (16GA)

Lenght - 8mm (5/16"), Color - Purple (OP #52), Thickness - 1,2mm (16GA)



## Hinged Segment Hoop Ring Lined With Outwa...

Reference : 0360

Material: Implant Grade Titanium Stone Material: Synthetic Opal

Lenght - 8mm (5/16"), Color - White (OP #17), Thickness - 1,2mm (16GA)

Lenght - 8mm (5/16"), Color - Blue (OP #05), Thickness - 1,2mm (16GA)

Lenght - 8mm (5/16"), Color - Rose (OP #22), Thickness - 1,2mm (16GA)

Lenght - 8mm (5/16"), Color - Purple (OP #52), Thickness - 1,2mm (16GA)





## Hinged Segment Double Hoop Ring With One ...

Reference : 0696

Material: Implant Grade Titanium Plating: PVD Stone Material: CZ

Lenght - 8mm (5/16" ) , Color - Clear, Thickness - 1,2mm (16GA)

Lenght - 10mm (3/8" ) , Color - Clear, Thickness - 1,2mm (16GA)

Lenght - 8mm (5/16" ) , Color - PVD Gold 18k/Clear, Thickness - 1,2mm (16GA)

Lenght - 10mm (3/8" ) , Color - PVD Gold 18k/Clear, Thickness - 1,2mm (16GA)



## Double Hoop Lined Sparkle Seamless Clicker ...

Reference : 0697

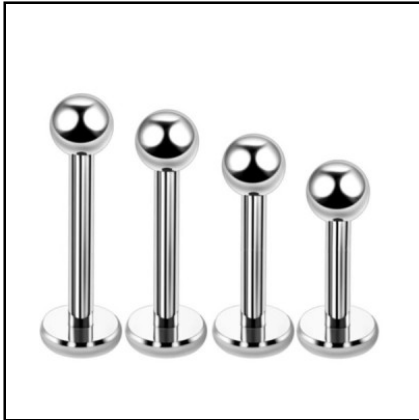
Material: Implant Grade Titanium Plating: PVD Stone Material: CZ

Lenght - 8mm (5/16" ) , Color - PVD Gold 18k/Clear, Thickness - 1,2mm (16GA)

Lenght - 10mm (3/8" ) , Color - PVD Gold 18k/Clear, Thickness - 1,2mm (16GA)

Lenght - 8mm (5/16" ) , Color - Clear, Thickness - 1,2mm (16GA)

Lenght - 10mm (3/8" ) , Color - Clear, Thickness - 1,2mm (16GA)



## Externally Threaded labret

Reference : C011

Material: Implant Grade Titanium

Lenght - 5mm (3/16"), Color - Silver, Thickness - 1,2mm (16GA), ball size - 3mm  
Lenght - 6mm (1/4"), Color - Silver, Thickness - 1,2mm (16GA), ball size - 3mm  
Lenght - 7mm (9/32"), Color - Silver, Thickness - 1,2mm (16GA), ball size - 3mm  
Lenght - 8mm (5/16"), Color - Silver, Thickness - 1,2mm (16GA), ball size - 3mm  
Lenght - 10mm (3/8") , Color - Silver, Thickness - 1,2mm (16GA), ball size - 3mm  
Lenght - 12mm (1/2"), Color - Silver, Thickness - 1,2mm (16GA), ball size - 3mm  
Lenght - 6mm (1/4"), Color - Silver, Thickness - 1,6mm (14GA), ball size - 3mm



## CZ With Ball Clusters Surrounding

Reference : 0558

Material: Implant Grade Titanium Stone Material: CZ

Lenght - 8mm (5/16"), Color - PVD Gold 18k/Clear, Thickness - 1,2mm (16GA), ball size - 2.5mm  
Lenght - 8mm (5/16"), Color - Clear, Thickness - 1,2mm (16GA), ball size - 3mm



## Double Triangle Labret

Reference : 0797

Material: Implant Grade Titanium Plating: PVD Stone Material: CZ

Lenght - 8mm (5/16"), Color - Clear, Thickness - 1,2mm (16GA)  
Lenght - 8mm (5/16"), Color - PVD Gold 18k/Clear, Thickness - 1,2mm (16GA)



## CZ Balls Labret

Reference : 0780

Material: Implant Grade Titanium Plating: PVD Stone Material: CZ

Lenght - 8mm (5/16"), Color - Clear, Thickness - 1,2mm (16GA)



## CZ Balls Labret

Reference : 0768

Material: Implant Grade Titanium Plating: PVD Stone Material: CZ

Lenght - 8mm (5/16"), Color - Clear, Thickness - 1,2mm (16GA)



## Tile 5 CZ

Reference : 0596

Material: Implant Grade Titanium Plating: PVD Stone Material: CZ

Lenght - 8mm (5/16"), Color - Clear, Thickness - 1,2mm (16GA)

Lenght - 8mm (5/16"), Color - PVD Gold 18k/Clear, Thickness - 1,2mm (16GA)

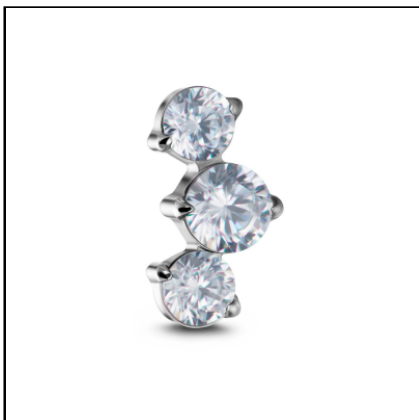


## Marquise Triple Labret

Reference : 0592

Material: Implant Grade Titanium Plating: PVD Stone Material: CZ

Lenght - 8mm (5/16"), Color - Clear, Thickness - 1,2mm (16GA)



## 3 Blaze Top

Reference : 0542

Material: Implant Grade Titanium Plating: PVD Stone Material: CZ

Lenght - 8mm (5/16"), Color - Clear, Thickness - 1,2mm (16GA)

Lenght - 8mm (5/16"), Color - PVD Gold 18k/Clear, Thickness - 1,2mm (16GA)



## CZ Paved Moon Shape Top Labret

Reference : 0565

Material: Implant Grade Titanium Stone Material: CZ

Lenght - 8mm (5/16"), Color - Clear, Thickness - 1,2mm (16GA)

Lenght - 8mm (5/16"), Color - PVD Gold 18k/Clear, Thickness - 1,2mm (16GA)



## CZ Paved Marquise Top Labret

Reference : 0564

Material: Implant Grade Titanium Stone Material: CZ

Lenght - 8mm (5/16"), Color - Clear, Thickness - 1,2mm (16GA)

Lenght - 8mm (5/16"), Color - PVD Gold 18k/Clear, Thickness - 1,2mm (16GA)



## CZ Paved Lightning Top Labret

Reference : 0563

Material: Implant Grade Titanium Stone Material: CZ

Lenght - 8mm (5/16"), Color - Clear, Thickness - 1,2mm (16GA)

Lenght - 8mm (5/16"), Color - PVD Gold 18k/Clear, Thickness - 1,2mm (16GA)



## 4 Oblong CZ Set Curve Top Labret

Reference : 0544

Material: Implant Grade Titanium Stone Material: CZ

Lenght - 8mm (5/16"), Color - Clear, Thickness - 1,2mm (16GA)

Lenght - 8mm (5/16"), Color - PVD Gold 18k/Clear, Thickness - 1,2mm (16GA)



## Labret Triangle CZ Top

Reference : 0189

Material: Implant Grade Titanium Plating: PVD Stone Material: CZ

Lenght - 8mm (5/16"), Color - Clear, Thickness - 1,2mm (16GA), ball size - 3mm

Lenght - 8mm (5/16"), Color - PVD Gold 18k/Clear, Thickness - 1,2mm (16GA), ball size - 3mm



## Threadless Push Pin 5 CZ Tile Labret

Reference : 0597

Material: Implant Grade Titanium Plating: PVD Stone Material: CZ

Lenght - 8mm (5/16"), Color - Clear, Thickness - 1,2mm (16GA)

Lenght - 8mm (5/16"), Color - PVD Gold 18k/Clear, Thickness - 1,2mm (16GA)



## Labret Heart CZ Top

Reference : 0188

Material: Implant Grade Titanium Plating: PVD Stone Material: CZ

Lenght - 8mm (5/16"), Color - Clear, Thickness - 1,2mm (16GA)

Lenght - 8mm (5/16"), Color - PVD Gold 18k/Clear, Thickness - 1,2mm (16GA)



## Labret Star CZ Top

Reference : 0187

Material: Implant Grade Titanium Plating: PVD Stone Material: CZ

Lenght - 8mm (5/16"), Color - Clear, Thickness - 1,2mm (16GA)

Lenght - 8mm (5/16"), Color - PVD Gold 18k/Clear, Thickness - 1,2mm (16GA)



## Labret Square CZ Top

Reference : 0186

Material: Implant Grade Titanium Plating: PVD Stone Material: CZ

Lenght - 8mm (5/16"), Color - Clear, Thickness - 1,2mm (16GA)

Lenght - 8mm (5/16"), Color - PVD Gold 18k/Clear, Thickness - 1,2mm (16GA)



## Snake Labret

Reference : 0584

Material: Implant Grade Titanium Plating: PVD

Lenght - 8mm (5/16"), Color - Silver, Thickness - 1,2mm (16GA)

Lenght - 8mm (5/16"), Color - PVD Gold 18k, Thickness - 1,2mm (16GA)



## 7 Balls Labret

Reference : 0812

Material: Implant Grade Titanium

Lenght - 8mm (5/16"), Color - Silver, Thickness - 1,2mm (16GA)

Lenght - 8mm (5/16"), Color - PVD Gold 18k/Clear, Thickness - 1,2mm (16GA)



## 5 Balls

Reference : 0809

Material: Implant Grade Titanium

Lenght - 8mm (5/16"), Color - Silver, Thickness - 1,2mm (16GA)

Lenght - 8mm (5/16"), Color - PVD Gold 18k/Clear, Thickness - 1,2mm (16GA)



## 3 Balls

Reference : 0808

Material: Implant Grade Titanium

Lenght - 8mm (5/16"), Color - Silver, Thickness - 1,2mm (16GA)

Lenght - 8mm (5/16"), Color - PVD Gold 18k/Clear, Thickness - 1,2mm (16GA)



## Descending 4 Balls

Reference : 0807

Material: Implant Grade Titanium

Lenght - 8mm (5/16"), Color - Silver, Thickness - 1,2mm (16GA)

Lenght - 8mm (5/16"), Color - PVD Gold 18k/Clear, Thickness - 1,2mm (16GA)



## Ball With Bead Cluster

Reference : 0804

Material: Implant Grade Titanium

Lenght - 8mm (5/16"), Color - Silver, Thickness - 1,2mm (16GA)

Lenght - 8mm (5/16"), Color - PVD Gold 18k/Clear, Thickness - 1,2mm (16GA)



## 3 Marquise CZ Labret

Reference : 0546

Material: Implant Grade Titanium Stone Material: CZ

Color - Clear, Thickness - 1,2mm (16GA)

Color - Clear/pink, Thickness - 1,2mm (16GA)

Color - Clear/AB, Thickness - 1,2mm (16GA)

Color - Clear/Aqua, Thickness - 1,2mm (16GA)

Color - PVD Gold 18k/Clear, Thickness - 1,2mm (16GA)

Color - Clear/amethyst, Thickness - 1,2mm (16GA)



## Marquise Opal Stone Blaze Set Fan Top Labret

Reference : 0639

Material: Implant Grade Titanium Stone Material: Synthetic Opal

Lenght - 8mm (5/16"), Color - White (OP #17), Thickness - 1,2mm (16GA)

Lenght - 8mm (5/16"), Color - Blue (OP #05), Thickness - 1,2mm (16GA)

Lenght - 8mm (5/16"), Color - Rose (OP #22), Thickness - 1,2mm (16GA)

Lenght - 8mm (5/16"), Color - PVD Gold 18k/White (OP #17), Thickness - 1,2mm (16GA)



## Marquise Crystal Blaze Set Fan Top Labret

Reference : 0625

Material: Implant Grade Titanium Stone Material: Crystal

Lenght - 8mm (5/16"), Color - Clear, Thickness - 1,2mm (16GA)

Lenght - 8mm (5/16"), Color - Clear/pink, Thickness - 1,2mm (16GA)

Lenght - 8mm (5/16"), Color - Clear/Purple, Thickness - 1,2mm (16GA)

Lenght - 8mm (5/16"), Color - Clear/Aqua, Thickness - 1,2mm (16GA)

Lenght - 8mm (5/16"), Color - Clear/AB, Thickness - 1,2mm (16GA)

Lenght - 8mm (5/16"), Color - PVD Gold 18k/Clear, Thickness - 1,2mm (16GA)

Lenght - 8mm (5/16"), Color - PVD Gold 18k/Aqua, Thickness - 1,2mm (16GA)



## Blaze Set CZ 2mm Stone Paw Shape Top labret

Reference : 0509

Material: Implant Grade Titanium Stone Material: CZ

Lenght - 8mm (5/16"), Color - Clear, Thickness - 1,2mm (16GA), ball size - 2mm

Lenght - 8mm (5/16"), Color - PVD Gold 18k/Clear, Thickness - 1,2mm (16GA), ball size - 2mm



## 7 Balls Link

Reference : 0474

Material: Implant Grade Titanium

Lenght - 8mm (5/16"), Color - Silver, Thickness - 1,2mm (16GA)

Lenght - 8mm (5/16"), Color - PVD Gold 18k, Thickness - 1,2mm (16GA)





## 3 Balls Top

Reference : 0386

Material: Implant Grade Titanium

Lenght - 8mm (5/16"), Color - Silver, Thickness - 1,2mm (16GA)

Lenght - 8mm (5/16"), Color - PVD Gold 18k/Clear, Thickness - 1,2mm (16GA)



## 3 Opal Blaze Set Trinity

Reference : 0294

Material: Implant Grade Titanium Stone Material: Synthetic Opal

Lenght - 6mm (1/4"), Color - White (OP #17), Thickness - 1,2mm (16GA)

Lenght - 6mm (1/4"), Color - Blue (OP #05), Thickness - 1,2mm (16GA)

Lenght - 8mm (5/16"), Color - White (OP #17), Thickness - 1,2mm (16GA)

Lenght - 8mm (5/16"), Color - Blue (OP #05), Thickness - 1,2mm (16GA)



## 3 CZ Blaze Set Trinity

Reference : 0292

Material: Implant Grade Titanium Stone Material: CZ

Lenght - 8mm (5/16"), Color - Clear, Thickness - 1,2mm (16GA), ball size - 5mm

Lenght - 8mm (5/16"), Color - Clear/pink, Thickness - 1,2mm (16GA), ball size - 5mm

Lenght - 8mm (5/16"), Color - Clear/Purple, Thickness - 1,2mm (16GA), ball size - 5mm

Lenght - 8mm (5/16"), Color - Clear/Aqua, Thickness - 1,2mm (16GA), ball size - 5mm

Lenght - 8mm (5/16"), Color - Clear/AB, Thickness - 1,2mm (16GA), ball size - 5mm

Lenght - 8mm (5/16"), Color - PVD Gold 18k/Clear, Thickness - 1,2mm (16GA), ball size - 5mm



## Bezel Set CZ Stone Flower Labret

Reference : 0226

Material: Implant Grade Titanium Stone Material: CZ

Lenght - 8mm (5/16"), Color - Clear, Thickness - 1,2mm (16GA)

Lenght - 8mm (5/16"), Color - Clear/pink, Thickness - 1,2mm (16GA)

Lenght - 8mm (5/16"), Color - Clear/Purple, Thickness - 1,2mm (16GA)

Lenght - 8mm (5/16"), Color - Clear/Aqua, Thickness - 1,2mm (16GA)

Lenght - 8mm (5/16"), Color - Clear/AB, Thickness - 1,2mm (16GA)

Lenght - 8mm (5/16"), Color - Clear/VM, Thickness - 1,2mm (16GA)



## Bezel Set CZ With balls Top

Reference : 0123

Material: Implant Grade Titanium Stone Material: CZ

Lenght - 8mm (5/16"), Color - Clear, Thickness - 1,2mm (16GA)



## Barbells With Set CZ Cluster Top

Reference : 0113

Material: Implant Grade Titanium Plating: PVD Stone Material: CZ

Lenght - 6mm (1/4"), Color - Clear, Thickness - 1,2mm (16GA)

Lenght - 8mm (5/16"), Color - Clear, Thickness - 1,2mm (16GA)



## 3-Bezel Set Opal Top

Reference : 0112

Material: Implant Grade Titanium Stone Material: Synthetic Opal

Lenght - 8mm (5/16"), Color - White (OP #17), Thickness - 1,2mm (16GA)

Lenght - 8mm (5/16"), Color - Blue (OP #05), Thickness - 1,2mm (16GA)



## 3-Bezel Set CZ Top

Reference : 0111

Material: Implant Grade Titanium Stone Material: CZ

Lenght - 8mm (5/16"), Color - Clear, Thickness - 1,2mm (16GA)

Lenght - 8mm (5/16"), Color - Clear/pink, Thickness - 1,2mm (16GA)

Lenght - 8mm (5/16"), Color - Clear/Aqua, Thickness - 1,2mm (16GA)

Lenght - 8mm (5/16"), Color - PVD Gold 18k/Clear, Thickness - 1,2mm (16GA)



## Ball Top Labret 4mm base

Reference : 0041

Material: Implant Grade Titanium 1.2 (16 GA)

Lenght - 6mm (1/4"), Color - Silver, Thickness - 1,2mm (16GA), ball size - 3mm  
Lenght - 8mm (5/16"), Color - Silver, Thickness - 1,2mm (16GA), ball size - 3mm  
Lenght - 10mm (3/8") , Color - Silver, Thickness - 1,2mm (16GA), ball size - 3mm  
Lenght - 12mm (1/2") , Color - Silver, Thickness - 1,2mm (16GA), ball size - 3mm  
Lenght - 6mm (1/4") , Color - PVD Gold 18k, Thickness - 1,2mm (16GA), ball size - 3mm  
Lenght - 8mm (5/16") , Color - PVD Gold 18k, Thickness - 1,2mm (16GA), ball size - 3mm  
Lenght - 10mm (3/8") , Color - PVD Gold 18k, Thickness - 1,2mm (16GA), ball size - 3mm



## 4mm Base Labret

Reference : 0185

Material: Implant Grade Titanium Plating: PVD Stone Material: CZ

Lenght - 6mm (1/4") , Color - Clear, Thickness - 1,2mm (16GA), ball size - 2mm  
Lenght - 6mm (1/4") , Color - Clear, Thickness - 1,2mm (16GA), ball size - 2.5mm  
Lenght - 6mm (1/4") , Color - Clear, Thickness - 1,2mm (16GA), ball size - 3mm  
Lenght - 8mm (5/16") , Color - Clear, Thickness - 1,2mm (16GA), ball size - 2mm  
Lenght - 8mm (5/16") , Color - Clear, Thickness - 1,2mm (16GA), ball size - 2.5mm  
Lenght - 8mm (5/16") , Color - Clear, Thickness - 1,2mm (16GA), ball size - 3mm  
Lenght - 6mm (1/4") , Color - PVD Gold 18k/Clear, Thickness - 1,2mm (16GA), ball size - 2mm



## 3mm Base Labret

Reference : TA-0029

Material: Implant Grade Titanium 1mm (18 GA) 1.2 (16 GA) Please note this item is Internally Threaded. Not compatible with the threadless jewelry parts

Lenght - 6mm (1/4") , Color - PVD Gold 18k, Thickness - 1,2mm (16GA)  
Lenght - 8mm (5/16") , Color - PVD Gold 18k, Thickness - 1,2mm (16GA)  
Lenght - 10mm (3/8") , Color - PVD Gold 18k, Thickness - 1,2mm (16GA)  
Lenght - 12mm (1/2") , Color - PVD Gold 18k, Thickness - 1,2mm (16GA)  
Lenght - 6mm (1/4") , Color - PVD Black, Thickness - 1,2mm (16GA)  
Lenght - 8mm (5/16") , Color - PVD Black, Thickness - 1,2mm (16GA)

# Belly Button



## Externally Threaded Belly Button

Reference : C0B5

Material: Implant Grade Titanium

Lenght - 10mm (3/8" ) , Color - Silver, Thickness - 1,6mm (14GA), ball size - 4 & 6 mm

Lenght - 12mm (1/2" ) , Color - Silver, Thickness - 1,6mm (14GA), ball size - 4 & 6 mm

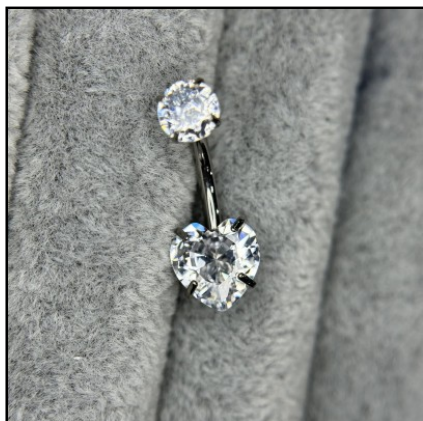


## Belly Button Navel Ring

Reference : 1260

Material: Implant Grade Titanium

Lenght - 10mm (3/8" ) , Color - Silver, Thickness - 1,6mm (14GA)

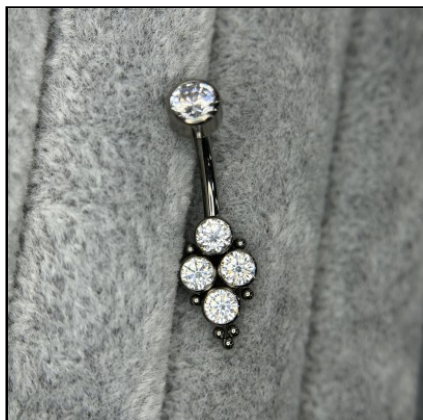


## Belly Button CZ Heart

Reference : 0486

Material: Implant Grade Titanium Plating: PVD Stone Material: CZ

Lenght - 10mm (3/8" ) , Color - Clear, Thickness - 1,6mm (14GA)



## Belly Button 4 cz

Reference : 1237

Material: Implant Grade Titanium Plating: PVD Stone Material: CZ

Lenght - 10mm (3/8" ) , Color - Clear, Thickness - 1,6mm (14GA)

# Belly Button



## Belly Button Ring CZ

Reference : 1266

Material: Implant Grade Titanium Stone Material: CZ

Lenght - 10mm (3/8") , Color - Clear, Thickness - 1,6mm (14GA)

Lenght - 10mm (3/8") , Color - Clear/pink, Thickness - 1,6mm (14GA)

Lenght - 10mm (3/8") , Color - Clear/Aqua, Thickness - 1,6mm (14GA)

Lenght - 12mm (1/2") , Color - Clear, Thickness - 1,6mm (14GA)

Lenght - 12mm (1/2") , Color - PVD Gold 18k/Clear, Thickness - 1,6mm (14GA)



## Belly Button Ring

Reference : 0995

Material: Implant Grade Titanium Plating: PVD

Lenght - 10mm (3/8") , Color - Clear, Thickness - 1,6mm (14GA)

Lenght - 10mm (3/8") , Color - PVD Gold 18k/Clear, Thickness - 1,6mm (14GA)

Lenght - 12mm (1/2") , Color - Silver, Thickness - 1,6mm (14GA)

Lenght - 12mm (1/2") , Color - PVD Gold 18k, Thickness - 1,6mm (14GA)



## Belly Button Opal CZ

Reference : 0862

Material: Implant Grade Titanium Plating: PVD Stone Material: CZ

Lenght - 10mm (3/8") , Color - OP17+Clear, Thickness - 1,6mm (14GA)



## Belly Button CZ Balls

Reference : 0643

Material: Implant Grade Titanium Plating: PVD Stone Material: CZ

Lenght - 10mm (3/8") , Color - Clear, Thickness - 1,6mm (14GA)

# Belly Button



## Curved Belly Buttton

Reference : 0107

Material: Implant Grade Titanium Plating: PVD Stone Material: CZ

Lenght - 10mm (3/8" ) , Color - Clear, Thickness - 1,6mm (14GA)



## CZ Belly Button Rings

Reference : 0855

Material: Implant Grade Titanium Plating: PVD Stone Material: CZ

Lenght - 10mm (3/8" ) , Color - Clear, Thickness - 1,6mm (14GA)

Lenght - 10mm (3/8" ) , Color - PVD Black/Clear, Thickness - 1,6mm (14GA)

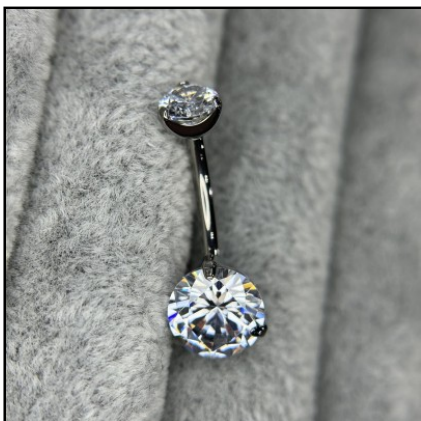
Lenght - 10mm (3/8" ) , Color - Clear/AB, Thickness - 1,6mm (14GA)

Lenght - 10mm (3/8" ) , Color - Clear/pink, Thickness - 1,6mm (14GA)

Lenght - 10mm (3/8" ) , Color - Clear/Aqua, Thickness - 1,6mm (14GA)

Lenght - 10mm (3/8" ) , Color - PVD Gold 18k/Clear, Thickness - 1,6mm (14GA)

Lenght - 10mm (3/8" ) , Color - Clear/Black, Thickness - 1,6mm (14GA)



## Set Double CZ Gem Belly Button

Reference : 0056

Material: Implant Grade Titanium Stone Material: CZ

Lenght - 10mm (3/8" ) , Color - Clear, Thickness - 1,6mm (14GA)

Lenght - 10mm (3/8" ) , Color - Clear/AB, Thickness - 1,6mm (14GA)

Lenght - 10mm (3/8" ) , Color - Clear/Purple, Thickness - 1,6mm (14GA)

Lenght - 10mm (3/8" ) , Color - Clear/VM, Thickness - 1,6mm (14GA)



## Belly Button

Reference : 0046

Material: Implant Grade Titanium Plating: PVD Stone Material: CZ

Lenght - 10mm (3/8" ) , Color - Clear, Thickness - 1,6mm (14GA), ball size - 5 & 8 mm

Lenght - 10mm (3/8" ) , Color - PVD Gold 18k/Clear, Thickness - 1,6mm (14GA), ball size - 5 & 8

Lenght - 10mm (3/8" ) , Color - PVD Black/Clear, Thickness - 1,6mm (14GA), ball size - 5 & 8

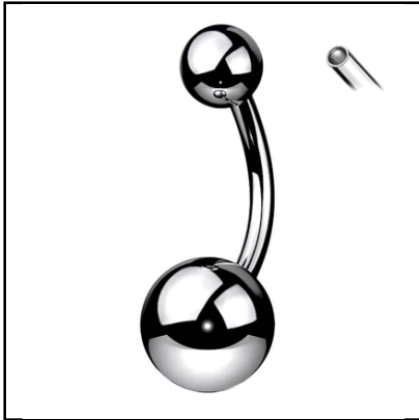
Lenght - 10mm (3/8" ) , Color - Clear, Thickness - 1,6mm (14GA), ball size - 4 & 6 mm

Lenght - 8mm (5/16" ) , Color - Clear, Thickness - 1,6mm (14GA), ball size - 4 & 6 mm

Lenght - 12mm (1/2" ) , Color - Clear, Thickness - 1,6mm (14GA), ball size - 5 & 8 mm

Lenght - 12mm (1/2" ) , Color - PVD Gold 18k/Clear, Thickness - 1,6mm (14GA), ball size - 5 &

# Belly Button



## Belly Button Ring

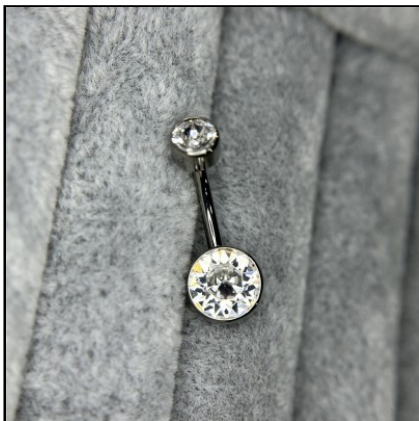
Reference : 0534

Material: Implant Grade Titanium

Lenght - 10mm (3/8") , Color - Silver, Thickness - 1,6mm (14GA), ball size - 5 & 8 mm

Lenght - 12mm (1/2") , Color - Silver, Thickness - 1,6mm (14GA), ball size - 5 & 8 mm

Lenght - 10mm (3/8") , Color - Silver, Thickness - 1,6mm (14GA), ball size - 4 & 6 mm



## Bezel Set Round CZ

Reference : 0136

Material: Implant Grade Titanium Plating: PVD Stone Material: CZ

Lenght - 10mm (3/8") , Color - Clear, Thickness - 1,6mm (14GA), ball size - 4 & 6 mm

Lenght - 10mm (3/8") , Color - Clear/pink, Thickness - 1,6mm (14GA), ball size - 4 & 6 mm

Lenght - 10mm (3/8") , Color - Clear/Aqua, Thickness - 1,6mm (14GA), ball size - 4 & 6 mm

Lenght - 10mm (3/8") , Color - Clear, Thickness - 1,6mm (14GA), ball size - 5 & 8 mm

Lenght - 10mm (3/8") , Color - Clear/pink, Thickness - 1,6mm (14GA), ball size - 5 & 8 mm

Lenght - 10mm (3/8") , Color - Clear/Aqua, Thickness - 1,6mm (14GA), ball size - 5 & 8 mm

Lenght - 10mm (3/8") , Color - PVD Gold 18k/Clear, Thickness - 1,6mm (14GA), ball size - 4 &

Lenght - 10mm (3/8") , Color - PVD Gold 18k/Clear, Thickness - 1,6mm (14GA), ball size - 5 &



## Round Top CZ With Prong Set Pear CZ

Reference : 0381

Material: Implant Grade Titanium Stone Material: CZ

Lenght - 10mm (3/8") , Color - Clear, Thickness - 1,6mm (14GA)

Lenght - 10mm (3/8") , Color - Clear/pink, Thickness - 1,6mm (14GA)

Lenght - 10mm (3/8") , Color - Clear/AB, Thickness - 1,6mm (14GA)

Lenght - 10mm (3/8") , Color - Clear/VM, Thickness - 1,6mm (14GA)



## Round Top Opal With Prong Set Pear Opal

Reference : 0382

Material: Implant Grade Titanium Stone Material: Synthetic Opal

Lenght - 10mm (3/8") , Color - White (OP #17), Thickness - 1,6mm (14GA)

Lenght - 10mm (3/8") , Color - Blue (OP #05), Thickness - 1,6mm (14GA)

Lenght - 10mm (3/8") , Color - Rose (OP #22), Thickness - 1,6mm (14GA)

Lenght - 10mm (3/8") , Color - Purple (OP #52), Thickness - 1,6mm (14GA)

# Belly Button



## Round Bezel Set CZ Cluster Belly Button Ring

Reference : 0105

Material: Implant Grade Titanium Stone Material: CZ

Lenght - 10mm (3/8" ) , Color - Clear, Thickness - 1,6mm (14GA)

Lenght - 10mm (3/8" ) , Color - Clear/pink, Thickness - 1,6mm (14GA)

Lenght - 10mm (3/8" ) , Color - Clear/Aqua, Thickness - 1,6mm (14GA)



## Opal Belly Button Ring

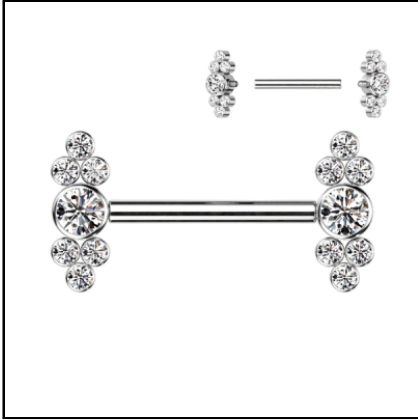
Reference : 0106

Material: Implant Grade Titanium Size: 1.6mm (14 GA), 10mm (3/8" ) Width: 9mm (0.4 inch)

Lenght - 10mm (3/8" ) , Color - Blue (OP #05), Thickness - 1,6mm (14GA)

Lenght - 10mm (3/8" ) , Color - White (OP #17), Thickness - 1,6mm (14GA)



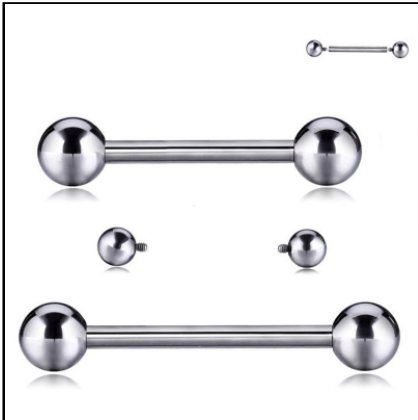


## Barbells with CZ Bezel Set

Reference : 0721

Material: Implant Grade Titanium Stone Material: CZ

Lenght - 14mm (9/16"), Color - Clear, Thickness - 1,6mm (14GA)



## Internal Thread Barbell With Balls

Reference : 0039

Material: Implant Grade Titanium

Lenght - 8mm (5/16"), Color - Silver, Thickness - 1,2mm (16GA), ball size - 3mm

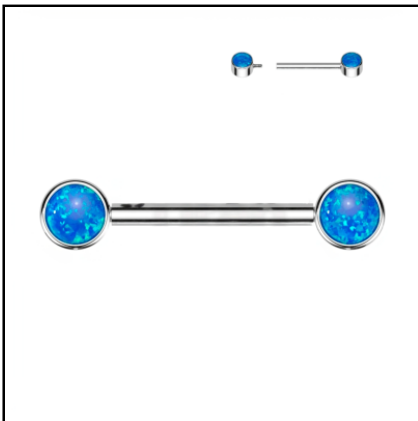
Lenght - 10mm (3/8") , Color - Silver, Thickness - 1,2mm (16GA), ball size - 3mm

Lenght - 12mm (1/2"), Color - Silver, Thickness - 1,2mm (16GA), ball size - 3mm

Lenght - 14mm (9/16"), Color - Silver, Thickness - 1,2mm (16GA), ball size - 4mm

Lenght - 12mm (1/2"), Color - Silver, Thickness - 1,6mm (14GA), ball size - 4mm

Lenght - 14mm (9/16"), Color - Silver, Thickness - 1,6mm (14GA), ball size - 4mm



## Nipple Barbell With Opal Bezel Set

Reference : 0130

Material: Implant Grade Titanium Stone Material: Synthetic Opal

Lenght - 12mm (1/2"), Color - White (OP #17), Thickness - 1,6mm (14GA), ball size - 5mm

Lenght - 12mm (1/2"), Color - Blue (OP #05), Thickness - 1,6mm (14GA), ball size - 5mm



## Nipple Barbell With Bezel Set CZ Ends

Reference : 0129

Material: Implant Grade Titanium Stone Material: CZ

Lenght - 12mm (1/2"), Color - Clear, Thickness - 1,6mm (14GA), ball size - 5mm

Lenght - 14mm (9/16"), Color - Clear, Thickness - 1,6mm (14GA), ball size - 5mm

Lenght - 12mm (1/2"), Color - Clear/AB, Thickness - 1,6mm (14GA), ball size - 5mm

Lenght - 12mm (1/2"), Color - Clear/Aqua, Thickness - 1,6mm (14GA), ball size - 5mm

Lenght - 12mm (1/2"), Color - Clear/Purple, Thickness - 1,6mm (14GA), ball size - 5mm

Lenght - 12mm (1/2"), Color - Clear/VM, Thickness - 1,6mm (14GA), ball size - 5mm

Lenght - 12mm (1/2"), Color - Clear/pink, Thickness - 1,6mm (14GA), ball size - 5mm



## Nipple Barbell With Set CZ and Balls

Reference : 0085

Material: Implant Grade Titanium Plating: PVD Stone Material: CZ

Lenght - 14mm (9/16"), Color - Clear, Thickness - 1,6mm (14GA)



## Nipple Barbell Opal

Reference : 0082

Material: Implant Grade Titanium Stone Material: Synthetic Opal

Lenght - 14mm (9/16"), Color - White (OP #17), Thickness - 1,6mm (14GA)

Lenght - 14mm (9/16"), Color - Blue (OP #05), Thickness - 1,6mm (14GA)



## Nipple Barbell With 5 Bezel Set CZ

Reference : 0081

Material: Implant Grade Titanium Stone Material: CZ

Lenght - 14mm (9/16"), Color - Clear, Thickness - 1,6mm (14GA)



## Curved Barbell

Reference : 0037

Material: Implant Grade Titanium 1.2 (16 GA) 1.6 (14GA)

Lenght - 6mm (1/4"), Color - Silver, Thickness - 1,2mm (16GA), ball size - 3mm

Lenght - 8mm (5/16"), Color - Silver, Thickness - 1,2mm (16GA), ball size - 3mm

Lenght - 10mm (3/8") , Color - Silver, Thickness - 1,2mm (16GA), ball size - 3mm

Lenght - 12mm (1/2") , Color - Silver, Thickness - 1,2mm (16GA), ball size - 3mm

Lenght - 10mm (3/8") , Color - Silver, Thickness - 1,6mm (14GA), ball size - 5mm

Lenght - 12mm (1/2") , Color - Silver, Thickness - 1,6mm (14GA), ball size - 5mm



## Snowflake CZ

Reference : 1339

Material: Implant Grade Titanium Stone Material: CZ

Color - Clear, Thickness - 1,2mm (16GA)



## 3 Kite cz top

Reference : 1354

Material: Implant Grade Titanium Stone Material: CZ

Color - Clear, Thickness - 1,2mm (16GA)



## Sword CZ

Reference : 1386

Material: Implant Grade Titanium Stone Material: CZ

Color - Clear, Thickness - 1,2mm (16GA)



## Spider CZ

Reference : 1391

Material: Implant Grade Titanium Stone Material: CZ Internally threaded

Color - Clear, Thickness - 1,2mm (16GA)

Color - Clear/amethyst, Thickness - 1,2mm (16GA)

Color - Clear/Black, Thickness - 1,2mm (16GA)



## Pendant Kite with Cz

Reference : 0992

Material: Implant Grade Titanium Plating: PVD

Color - Clear

Color - PVD Gold 18k/Clear



## Snake Pendant

Reference : 0961

Material: Implant Grade Titanium Plating: PVD

Color - Silver

Color - PVD Gold 18k



## Pendant 3 CZ

Reference : 0952

Material: Implant Grade Titanium Plating: PVD

Color - Clear

Color - PVD Gold 18k/Clear



## Bee Pendant

Reference : 0955

Material: Implant Grade Titanium Plating: PVD

Color - Silver

Color - PVD Gold 18k



## Combined CZ Top

Reference : 1249

Material: Implant Grade Titanium Stone Material: CZ

Color - Clear, Thickness - 1,2mm (16GA)

Color - Clear/VM, Thickness - 1,2mm (16GA)



## Moon With CZ

Reference : 1221

Material: Implant Grade Titanium Stone Material: CZ

Color - Clear, Thickness - 1,2mm (16GA)

Color - Clear/amethyst, Thickness - 1,2mm (16GA)



## 3 Marquise CZ

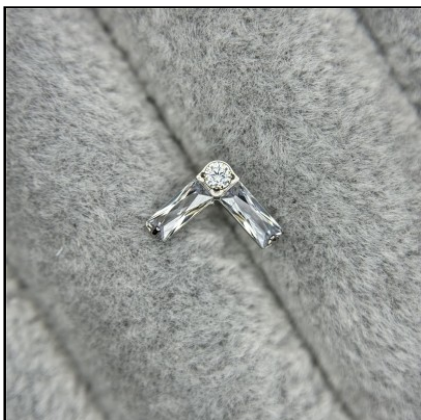
Reference : 1213

Material: Implant Grade Titanium Stone Material: CZ

Color - Clear, Thickness - 1,2mm (16GA)

Color - Clear/pink, Thickness - 1,2mm (16GA)

Color - Clear/amethyst, Thickness - 1,2mm (16GA)



## 2 Rectangles CZ and Round CZ

Reference : 1305

Material: Implant Grade Titanium Stone Material: CZ

Color - Clear, Thickness - 1,2mm (16GA)

Color - Clear/amethyst, Thickness - 1,2mm (16GA)



## CZ Paved Pear With Pear CZ Center

Reference : 1281

Material: Implant Grade Titanium Stone Material: CZ

Color - Clear, Thickness - 1,2mm (16GA)

Color - Clear/pink, Thickness - 1,2mm (16GA)

Color - Clear/amethyst, Thickness - 1,2mm (16GA)

Color - PVD Gold 18k/Clear, Thickness - 1,2mm (16GA)

Color - PVD Gold 18k/Amethyst, Thickness - 1,2mm (16GA)



## Semi Precious Round Stones

Reference : 1267

Material: Implant Grade Titanium Plating: PVD Stone Material: Natural Stone

Color - Amethyst, Thickness - 1,2mm (16GA)

Color - Turquoise, Thickness - 1,2mm (16GA)

Color - Green Aventurine, Thickness - 1,2mm (16GA)

Color - White Opal, Thickness - 1,2mm (16GA)

Color - Pink Opal, Thickness - 1,2mm (16GA)



## CZ Paved Triangle With Triangle CZ Center

Reference : 1282

Material: Implant Grade Titanium Stone Material: CZ

Color - Clear/amethyst, Thickness - 1,2mm (16GA)



## CZ Balls With Opal Center

Reference : 0513

Material: Implant Grade Titanium Stone Material: Synthetic Opal + CZ

Color - OP38+Clear, Thickness - 1,2mm (16GA)



## 3 Marquise CZ Top

Reference : 0879

Material: Implant Grade Titanium Stone Material: CZ

Color - Clear, Thickness - 1,2mm (16GA)

Color - Clear/pink, Thickness - 1,2mm (16GA)

Color - Clear/Aqua, Thickness - 1,2mm (16GA)

Color - PVD Gold 18k/Clear, Thickness - 1,2mm (16GA)

Color - Clear/amethyst, Thickness - 1,2mm (16GA)



## Marquise CZ Mix

Reference : 1329

Material: Implant Grade Titanium Plating: PVD Stone Material: CZ

Color - Clear, Thickness - 1,2mm (16GA)



## Kite Top

Reference : 1040

Material: Implant Grade Titanium Plating: PVD Stone Material: CZ

Color - Clear, Thickness - 1,2mm (16GA)

Color - PVD Gold 18k/Clear, Thickness - 1,2mm (16GA)

Color - Clear/pink, Thickness - 1,2mm (16GA)

Color - Clear/Aqua, Thickness - 1,2mm (16GA)



## Oval Top CZ

Reference : 1038

Material: Implant Grade Titanium Plating: PVD Stone Material: CZ

Color - Clear, Thickness - 1,2mm (16GA)



## Marquise & Round Top

Reference : 0925

Material: Implant Grade Titanium Plating: PVD Stone Material: CZ

Color - Clear, Thickness - 1,2mm (16GA)

Color - PVD Gold 18k/Clear, Thickness - 1,2mm (16GA)



## 4 Marquise Top

Reference : 0923

Material: Implant Grade Titanium Plating: PVD Stone Material: CZ

Color - Clear, Thickness - 1,2mm (16GA)

Color - PVD Gold 18k/Clear, Thickness - 1,2mm (16GA)



## 3 Rectangle Top

Reference : 0888

Material: Implant Grade Titanium Plating: PVD Stone Material: CZ

Color - Clear, Thickness - 1,2mm (16GA)



## Round Tear Top

Reference : 0851

Material: Implant Grade Titanium Plating: PVD Stone Material: CZ

Color - Clear, Thickness - 1,2mm (16GA)





## CZ Branch

Reference : 1102

Material: Implant Grade Titanium Plating: PVD Stone Material: CZ

Color - Clear, Thickness - 1,2mm (16GA)

Color - PVD Gold 18k/Clear, Thickness - 1,2mm (16GA)



## CZ Alternate

Reference : 1186

Material: Implant Grade Titanium Plating: PVD Stone Material: CZ

Color - Clear, Thickness - 1,2mm (16GA)

Color - Clear/pink, Thickness - 1,2mm (16GA)

Color - PVD Gold 18k/Clear, Thickness - 1,2mm (16GA)



## 3 CZ round

Reference : 1180

Material: Implant Grade Titanium Plating: PVD Stone Material: CZ

Color - Clear, Thickness - 1,2mm (16GA)

Color - Clear/pink, Thickness - 1,2mm (16GA)

Color - PVD Gold 18k/Clear, Thickness - 1,2mm (16GA)



## Irregular moon top

Reference : 1142

Material: Implant Grade Titanium Plating: PVD

Color - Silver, Thickness - 1,2mm (16GA)

Color - PVD Gold 18k, Thickness - 1,2mm (16GA)



## 2 Set Marquise

Reference : 1194

Material: Implant Grade Titanium Plating: PVD Stone Material: CZ

Color - Clear, Thickness - 1,2mm (16GA)

Color - Clear/Aqua, Thickness - 1,2mm (16GA)

Color - Clear/pink, Thickness - 1,2mm (16GA)

Color - Clear/amethyst, Thickness - 1,2mm (16GA)

Color - PVD Gold 18k/Clear, Thickness - 1,2mm (16GA)



## Bezel CZ With Chain Dangle Top

Reference : 1238

Material: Implant Grade Titanium Plating: PVD Stone Material: CZ

Color - Clear, Thickness - 1,2mm (16GA)

Color - PVD Gold 18k/Clear, Thickness - 1,2mm (16GA)



## Bezel CZ With Chain Dangle Top

Reference : 1230

Material: Implant Grade Titanium Plating: PVD Stone Material: CZ

Color - Clear, Thickness - 1,2mm (16GA)

Color - PVD Gold 18k/Clear, Thickness - 1,2mm (16GA)



## 5 CZ Fan Top

Reference : 1002

Material: Implant Grade Titanium Plating: PVD Stone Material: CZ

Color - Clear, Thickness - 1,2mm (16GA)



## Titanium 5 Prong Set CZ Stone Top

Reference : 0896

Material: Implant Grade Titanium Plating: PVD Stone Material: CZ

Color - Clear, Thickness - 1,2mm (16GA)

Color - Clear/Aqua, Thickness - 1,2mm (16GA)

Color - Clear/amethyst, Thickness - 1,2mm (16GA)



## Bezel Set 9 CZ Top

Reference : 0877

Material: Implant Grade Titanium Plating: PVD Stone Material: CZ

Color - Clear, Thickness - 1,2mm (16GA)

Color - Clear/pink, Thickness - 1,2mm (16GA)

Color - Clear/Aqua, Thickness - 1,2mm (16GA)



## Chain

Reference : 1110

Material: Implant Grade Titanium Plating: PVD

Lenght - 35mm, Color - Silver

Lenght - 40mm, Color - Silver

Lenght - 45mm, Color - Silver

Lenght - 40mm, Color - PVD Gold 18k

Lenght - 45mm, Color - PVD Gold 18k

Lenght - 35mm, Color - PVD Gold 18k



## 4 Marquise CZ Leaf Shape Top

Reference : 1100

Material: Implant Grade Titanium Plating: PVD Stone Material: CZ

Color - Clear, Thickness - 1,2mm (16GA)

Color - Clear/pink, Thickness - 1,2mm (16GA)

Color - PVD Gold 18k/Clear, Thickness - 1,2mm (16GA)



## Marquise CZ and Round CZ Alternate Top

Reference : 1094

Material: Implant Grade Titanium Plating: PVD Stone Material: CZ

Color - Clear, Thickness - 1,2mm (16GA)

Color - PVD Gold 18k/Clear, Thickness - 1,2mm (16GA)



## 3 Prong Set Marquise CZ Arrange By Size Top

Reference : 1092

Material: Implant Grade Titanium Plating: PVD Stone Material: CZ

Color - Clear, Thickness - 1,2mm (16GA)

Color - PVD Gold 18k/Clear, Thickness - 1,2mm (16GA)



## 3 Prong Set Marquise CZ Curved Fan Top

Reference : 1090

Material: Implant Grade Titanium Plating: PVD Stone Material: CZ

Color - Clear, Thickness - 1,2mm (16GA)

Color - Clear/pink, Thickness - 1,2mm (16GA)

Color - Clear/AB, Thickness - 1,2mm (16GA)

Color - PVD Gold 18k/Clear, Thickness - 1,2mm (16GA)

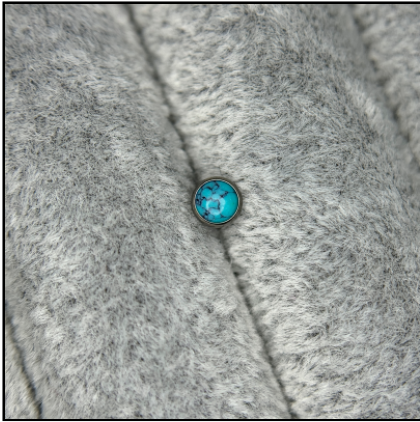


## Titanium 5 CNC Set Round CZ With 5 Chians D...

Reference : 1174

Material: Implant Grade Titanium Plating: PVD Stone Material: CZ

Color - Clear, Thickness - 1,2mm (16GA)



## Titanium Bezel Set Semi Precious Stones Disk ...

Reference : 1196

Material: Implant Grade Titanium Plating: PVD Stone Material: Natural Stone

Color - White Jade, Thickness - 1,2mm (16GA)

Color - Turquoise, Thickness - 1,2mm (16GA)

Color - Rose QZ, Thickness - 1,2mm (16GA)

Color - Amethyst, Thickness - 1,2mm (16GA)

Color - Black Onyx, Thickness - 1,2mm (16GA)



## Titanium CNC Set Nature Marquise Stone Top

Reference : 1195

Material: Implant Grade Titanium Plating: PVD Stone Material: Natural Stone

Color - White Shell, Thickness - 1,2mm (16GA)

Color - White Jade, Thickness - 1,2mm (16GA)

Color - Turquoise, Thickness - 1,2mm (16GA)

Color - Green Onyx, Thickness - 1,2mm (16GA)

Color - Green Aventurine, Thickness - 1,2mm (16GA)

Color - Amethyst, Thickness - 1,2mm (16GA)

Color - Rose QZ, Thickness - 1,2mm (16GA)



## Irregular Hammering Rectangle Top

Reference : 1138

Material: Implant Grade Titanium

Color - Silver, Thickness - 1,2mm (16GA)

Color - PVD Gold 18k, Thickness - 1,2mm (16GA)



## Irregular Hammering Oval Top

Reference : 1136

Material: Implant Grade Titanium

Color - Silver, Thickness - 1,2mm (16GA)

Color - PVD Gold 18k, Thickness - 1,2mm (16GA)



## Irregular Hammering Square Top

Reference : 1126

Material: Implant Grade Titanium Plating: PVD Stone Material: CZ

Color - Silver, Thickness - 1,2mm (16GA)

Color - PVD Gold 18k, Thickness - 1,2mm (16GA)



## 5 Set Marquise CZ With Dangle Chain Top

Reference : 1107

Material: Implant Grade Titanium Plating: PVD Stone Material: CZ

Color - Clear, Thickness - 1,2mm (16GA)

Color - PVD Gold 18k/Clear, Thickness - 1,2mm (16GA)



## 17 Bezel Set CZ In Curved Line Top

Reference : 1112

Material: Implant Grade Titanium Plating: PVD Stone Material: CZ

Color - Clear, Thickness - 1,2mm (16GA)



## Irregular Hammering Round Top

Reference : 1144

Material: Implant Grade Titanium Plating: PVD

Color - Silver, Thickness - 1,2mm (16GA), ball size - 3mm

Color - PVD Gold 18k, Thickness - 1,2mm (16GA)



## Irregular Heart Top

Reference : 1140

Material: Implant Grade Titanium Plating: PVD

Color - Silver, Thickness - 1,2mm (16GA)

Color - PVD Gold 18k, Thickness - 1,2mm (16GA)



## Irregular Hammering Triangle Top

Reference : 1128

Material: Implant Grade Titanium Plating: PVD

Color - Silver, Thickness - 1,2mm (16GA)

Color - PVD Gold 18k, Thickness - 1,2mm (16GA)



## Irregular Hammer Point Rectangle With Chain ...

Reference : 1104

Material: Implant Grade Titanium Plating: PVD

Color - Silver, Thickness - 1,2mm (16GA)

Color - PVD Gold 18k, Thickness - 1,2mm (16GA)



## 3 Set Opal Stone Top

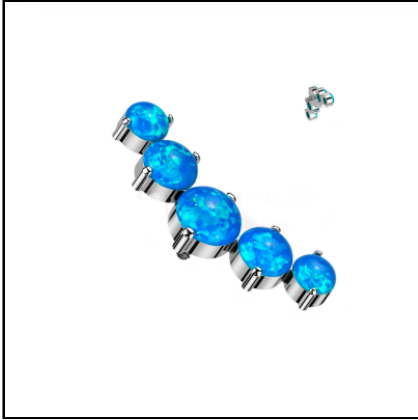
Reference : 0892

Material: Implant Grade Titanium Plating: PVD Stone Material: Opal

Color - White (OP #17), Thickness - 1,2mm (16GA)

Color - Rose (OP #22), Thickness - 1,2mm (16GA)

Color - Blue (OP #05), Thickness - 1,2mm (16GA)



## 5 Set Opal Stone Top

Reference : 0894

Material: Implant Grade Titanium Plating: PVD Stone Material: Opal

Color - White (OP #17), Thickness - 1,2mm (16GA)

Color - Rose (OP #22), Thickness - 1,2mm (16GA)

Color - Blue (OP #05), Thickness - 1,2mm (16GA)



## 7 Prong Set Marquise CZ Tri-bead Cluster

Reference : 1051

Material: Implant Grade Titanium Plating: PVD Stone Material: CZ

Color - Clear, Thickness - 1,2mm (16GA)

Color - Clear/pink, Thickness - 1,2mm (16GA)

Color - PVD Gold 18k/Clear, Thickness - 1,2mm (16GA)



## 7 Set Marquise CZ

Reference : 1050

Material: Implant Grade Titanium Plating: PVD Stone Material: CZ

Color - Clear, Thickness - 1,2mm (16GA)

Color - Clear/pink, Thickness - 1,2mm (16GA)

Color - PVD Gold 18k/Clear, Thickness - 1,2mm (16GA)



## 6 Prong Set Marquise CZ Tri-bead Cluster

Reference : 1049

Material: Implant Grade Titanium Plating: PVD Stone Material: CZ

Color - Clear, Thickness - 1,2mm (16GA)

Color - Clear/pink, Thickness - 1,2mm (16GA)

Color - PVD Gold 18k/Clear, Thickness - 1,2mm (16GA)





## Internally 6 Set Marquise CZ

Reference : 1048

Material: Implant Grade Titanium Plating: PVD Stone Material: CZ

Color - Clear, Thickness - 1,2mm (16GA)

Color - Clear/pink, Thickness - 1,2mm (16GA)

Color - PVD Gold 18k/Clear, Thickness - 1,2mm (16GA)



## Internally 5 Prong Set Marquise CZ Tri-bead Cl...

Reference : 1047

Material: Implant Grade Titanium Plating: PVD Stone Material: CZ

Color - Clear, Thickness - 1,2mm (16GA)

Color - Clear/pink, Thickness - 1,2mm (16GA)

Color - PVD Gold 18k/Clear, Thickness - 1,2mm (16GA)



## 5 Set Marquise CZ

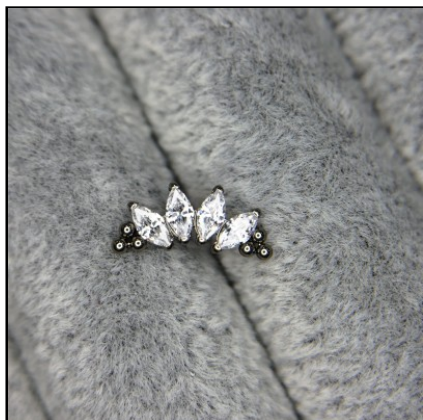
Reference : 1046

Material: Implant Grade Titanium Plating: PVD Stone Material: CZ

Color - Clear, Thickness - 1,2mm (16GA)

Color - Clear/pink, Thickness - 1,2mm (16GA)

Color - PVD Gold 18k/Clear, Thickness - 1,2mm (16GA)



## 4 Prong Set Marquise CZ Tri-bead Cluster

Reference : 1045

Material: Implant Grade Titanium Plating: PVD Stone Material: CZ

Color - Clear, Thickness - 1,2mm (16GA)

Color - Clear/pink, Thickness - 1,2mm (16GA)

Color - PVD Gold 18k/Clear, Thickness - 1,2mm (16GA)



## 4 Set Marquise CZ

Reference : 1044

Material: Implant Grade Titanium Plating: PVD Stone Material: CZ

Color - Clear, Thickness - 1,2mm (16GA)

Color - Clear/pink, Thickness - 1,2mm (16GA)

Color - PVD Gold 18k/Clear, Thickness - 1,2mm (16GA)



## 5 CZ Set Curve Top

Reference : 0540

Material: Implant Grade Titanium Stone Material: CZ

Color - Clear, Thickness - 1,2mm (16GA)

Color - Clear/pink, Thickness - 1,2mm (16GA)

Color - Clear/Aqua, Thickness - 1,2mm (16GA)

Color - Clear/amethyst, Thickness - 1,2mm (16GA)

Color - PVD Gold 18k/Clear, Thickness - 1,2mm (16GA)



## Set Curve Top

Reference : 0538

Material: Implant Grade Titanium Plating: PVD Stone Material: CZ & Opal

Color - Clear, Thickness - 1,2mm (16GA)

Color - Clear/pink, Thickness - 1,2mm (16GA)

Color - Clear/Aqua, Thickness - 1,2mm (16GA)

Color - OP05+Clear, Thickness - 1,2mm (16GA)

Color - OP17+Clear, Thickness - 1,2mm (16GA)

Color - PVD Gold 18k/Clear, Thickness - 1,2mm (16GA)



## Threadless Push Pin Marquise Top

Reference : 0630

Material: Implant Grade Titanium Plating: PVD Stone Material: CZ

Color - Clear

Color - PVD Gold 18k/Clear

Color - PVD Black/Clear



## Triangle Top

Reference : TA-0024

Material: Implant Grade Titanium Plating: PVD

Color - Silver, Thickness - 1,2mm (16GA)

Color - PVD Gold 18k, Thickness - 1,2mm (16GA)



## Threadless Push Pin Cz

Reference : 0412

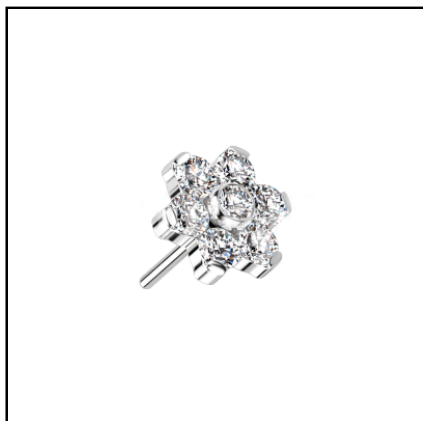
Material: Implant Grade Titanium Stone Material: CZ Threadless Pushin

Color - Clear, ball size - 2mm

Color - Clear, ball size - 3mm

Color - PVD Gold 18k/Clear, ball size - 2mm

Color - PVD Gold 18k/Clear, ball size - 3mm



## Threadless Push Pin Flowe cz

Reference : 0413

Material: Implant Grade Titanium Stone Material: CZ Threadless Pushin

Color - Clear, ball size - 5mm

Color - PVD Gold 18k/Clear, ball size - 5mm



## Threadless Push Pin Crescent Moon

Reference : 0404

Material: Implant Grade Titanium Threadless Pushin

Color - Silver, ball size - 3mm

Color - PVD Gold 18k, ball size - 3mm



## 3 Bezel Set Rectangles Opal Stone Top

Reference : 0902

Material: Implant Grade Titanium Stone Material: Synthetic Opal

Color - White (OP #17), Thickness - 1,2mm (16GA)

Color - Blue (OP #05), Thickness - 1,2mm (16GA)

Color - Rose (OP #22), Thickness - 1,2mm (16GA)

Color - Purple (OP #52), Thickness - 1,2mm (16GA)



## 3 Bezel Set Rectangles CZ Top

Reference : 0900

Material: Implant Grade Titanium Stone Material: CZ

Color - Clear, Thickness - 1,2mm (16GA)

Color - Clear/pink, Thickness - 1,2mm (16GA)

Color - PVD Gold 18k/Clear, Thickness - 1,2mm (16GA)



## Marquise 5 Gem Curved Top

Reference : 0979

Material: Implant Grade Titanium Stone Material: CZ

Color - Clear, Thickness - 1,2mm (16GA)

Color - Clear/pink, Thickness - 1,2mm (16GA)

Color - Clear/Purple, Thickness - 1,2mm (16GA)

Color - PVD Gold 18k/Clear, Thickness - 1,2mm (16GA)



## Rectangle CZ Top

Reference : 0931

Material: Implant Grade Titanium Stone Material: CZ

Color - Clear, Thickness - 1,2mm (16GA)

Color - Clear/pink, Thickness - 1,2mm (16GA)

Color - Clear/Purple, Thickness - 1,2mm (16GA)

Color - PVD Gold 18k/Clear, Thickness - 1,2mm (16GA)



## 9 Set CZ Stone Top

Reference : 0898

Material: Implant Grade Titanium Stone Material: CZ

Color - Clear, Thickness - 1,2mm (16GA)

Color - Clear/pink, Thickness - 1,2mm (16GA)

Color - Clear/Aqua, Thickness - 1,2mm (16GA)

Color - PVD Gold 18k/Clear, Thickness - 1,2mm (16GA)



## 5 Round Bezel Set CZ Curve Only Top

Reference : 0121

Material: Implant Grade Titanium Stone Material: CZ

Color - Clear, Thickness - 1,2mm (16GA)

Color - Clear/pink, Thickness - 1,2mm (16GA)

Color - Clear/Aqua, Thickness - 1,2mm (16GA)

Color - Clear/Black, Thickness - 1,2mm (16GA)

Color - Clear/Blue, Thickness - 1,2mm (16GA)

Color - Clear/Purple, Thickness - 1,2mm (16GA)

Color - Clear/Green, Thickness - 1,2mm (16GA)



## Top moon

Reference : TA-0022

Material: Implant Grade Titanium 1.2 (16 GA) 1.6 (14GA)

Color - Silver, Thickness - 1,2mm (16GA)

Color - PVD Gold 18k, Thickness - 1,2mm (16GA)



## Top heart

Reference : TA-0019

Material: Implant Grade Titanium 1.2 (16 GA) 1.6 (14GA)

Color - Silver, Thickness - 1,2mm (16GA)

Color - PVD Gold 18k, Thickness - 1,2mm (16GA)



## Top star

Reference : TA-0017

Material: Implant Grade Titanium 1.2 (16 GA) 1.6 (14GA)

Color - Silver, Thickness - 1,2mm (16GA)

Color - PVD Gold 18k, Thickness - 1,2mm (16GA)



## Flat Bezel Set Crystal Top

Reference : TA-0015

Material: Implant Grade Titanium Stone Material: CZ

Color - Clear, Thickness - 1,2mm (16GA), ball size - 3mm

Color - Clear, Thickness - 1,6mm (14GA), ball size - 3mm

Color - Clear, Thickness - 1,2mm (16GA), ball size - 4mm

Color - Clear, Thickness - 1,6mm (14GA), ball size - 4mm

Color - Clear, Thickness - 1,2mm (16GA), ball size - 5mm

Color - Clear, Thickness - 1,6mm (14GA), ball size - 5mm

Color - Clear/AB, Thickness - 1,2mm (16GA), ball size - 3mm



## Nose Trinity

Reference : 0283

Material: Implant Grade Titanium Plating: PVD Stone Material: CZ

Lenght - 6mm (1/4"), Color - White (OP #17), Thickness - 0,8mm (20GA)

Lenght - 6mm (1/4"), Color - Blue (OP #05), Thickness - 0,8mm (20GA)



## Nose Screw

Reference : 0168

Material: Implant Grade Titanium Plating: PVD Stone Material: CZ

Lenght - 6mm (1/4"), Color - Clear, Thickness - 0,8mm (20GA), ball size - 2mm

Lenght - 6mm (1/4"), Color - PVD Gold 18k/Clear, Thickness - 0,8mm (20GA), ball size - 2mm

Lenght - 6mm (1/4"), Color - Clear, Thickness - 0,8mm (20GA), ball size - 2.5mm

Lenght - 6mm (1/4"), Color - PVD Gold 18k/Clear, Thickness - 0,8mm (20GA), ball size - 2.5mm

Lenght - 6mm (1/4"), Color - Clear, Thickness - 0,8mm (20GA), ball size - 3mm

Lenght - 6mm (1/4"), Color - PVD Gold 18k/Clear, Thickness - 0,8mm (20GA), ball size - 3mm



## Nose Set Marquise CZ

Reference : 0859

Material: Implant Grade Titanium Stone Material: CZ

Lenght - 6mm (1/4"), Color - Clear, Thickness - 0,8mm (20GA)

Lenght - 6mm (1/4"), Color - PVD Gold 18k/Clear, Thickness - 0,8mm (20GA)



## CZ Nose Screw

Reference : 0050

Material: Implant Grade Titanium Stone Material: CZ

Lenght - 6mm (1/4"), Color - Clear, Thickness - 0,8mm (20GA), ball size - 2mm

Lenght - 6mm (1/4"), Color - Clear/pink, Thickness - 0,8mm (20GA), ball size - 2mm

Lenght - 6mm (1/4"), Color - Clear/Purple, Thickness - 0,8mm (20GA), ball size - 2mm

Lenght - 6mm (1/4"), Color - Clear/Aqua, Thickness - 0,8mm (20GA), ball size - 2mm

Lenght - 6mm (1/4"), Color - Clear/Blue, Thickness - 0,8mm (20GA), ball size - 2mm

Lenght - 6mm (1/4"), Color - PVD Gold 18k/Clear, Thickness - 0,8mm (20GA), ball size - 2mm



## Dome Nose Screw

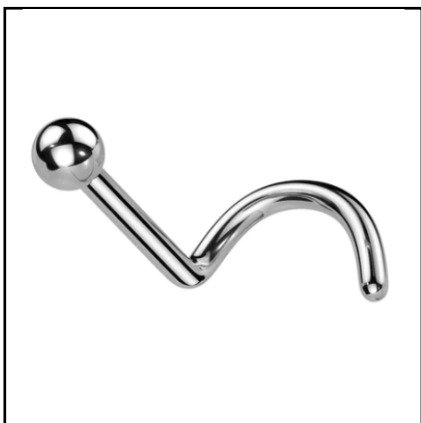
Reference : 0273

Material: Implant Grade Titanium 2mm top

Lenght - 6mm (1/4"), Color - PVD Gold 18k, Thickness - 0,8mm (20GA)

Lenght - 6mm (1/4"), Color - Silver, Thickness - 0,8mm (20GA)

Lenght - 6mm (1/4"), Color - PVD Black, Thickness - 0,8mm (20GA)



## Ball Nose Screw

Reference : 0272

Material: Implant Grade Titanium 2mm ball

Lenght - 6mm (1/4"), Color - PVD Gold 18k, Thickness - 0,8mm (20GA)

Lenght - 6mm (1/4"), Color - Silver, Thickness - 0,8mm (20GA)





## 3 Hole Dermal Anchor

Reference : TA-0010

Material: Implant Grade Titanium 1.2 (16 GA) 1.6 (14GA)

Thickness - 1,2mm (16GA), Height - 2.5mm

Thickness - 1,2mm (16GA), Height - 3mm

Thickness - 1,6mm (14GA), Height - 2.5mm

Thickness - 1,6mm (14GA), Height - 3mm



## Flat Bezel Set Crystal Top

Reference : TA-0015

Material: Implant Grade Titanium Stone Material: CZ

Color - Clear, Thickness - 1,2mm (16GA), ball size - 3mm

Color - Clear, Thickness - 1,6mm (14GA), ball size - 3mm

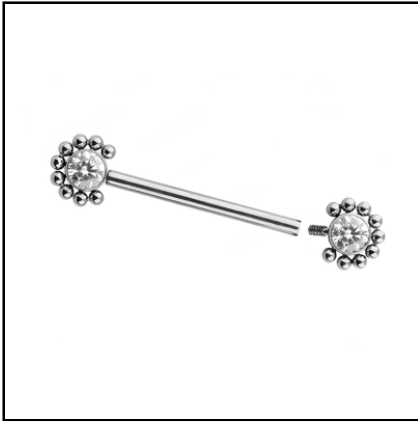
Color - Clear, Thickness - 1,2mm (16GA), ball size - 4mm

Color - Clear, Thickness - 1,6mm (14GA), ball size - 4mm

Color - Clear, Thickness - 1,2mm (16GA), ball size - 5mm

Color - Clear, Thickness - 1,6mm (14GA), ball size - 5mm

Color - Clear/AB, Thickness - 1,2mm (16GA), ball size - 3mm



## CZ and Surrounding Ball Cluster Nipple

Reference : 0500

Material: Implant Grade Titanium Plating: PVD Stone Material: CZ

Lenght - 14mm (9/16"), Color - Silver, Thickness - 1,6mm (14GA), ball size - 4mm

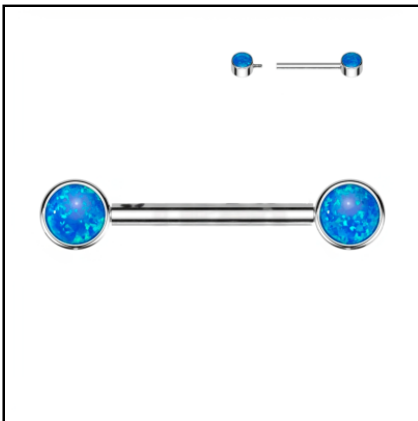


## Barbells with CZ Bezel Set

Reference : 0721

Material: Implant Grade Titanium Stone Material: CZ

Lenght - 14mm (9/16"), Color - Clear, Thickness - 1,6mm (14GA)



## Nipple Barbell With Opal Bezel Set

Reference : 0130

Material: Implant Grade Titanium Stone Material: Synthetic Opal

Lenght - 12mm (1/2"), Color - White (OP #17), Thickness - 1,6mm (14GA), ball size - 5mm

Lenght - 12mm (1/2"), Color - Blue (OP #05), Thickness - 1,6mm (14GA), ball size - 5mm



## Nipple Barbell With Bezel Set CZ Ends

Reference : 0129

Material: Implant Grade Titanium Stone Material: CZ

Lenght - 12mm (1/2"), Color - Clear, Thickness - 1,6mm (14GA), ball size - 5mm

Lenght - 14mm (9/16"), Color - Clear, Thickness - 1,6mm (14GA), ball size - 5mm

Lenght - 12mm (1/2"), Color - Clear/AB, Thickness - 1,6mm (14GA), ball size - 5mm

Lenght - 12mm (1/2"), Color - Clear/Aqua, Thickness - 1,6mm (14GA), ball size - 5mm

Lenght - 12mm (1/2"), Color - Clear/Purple, Thickness - 1,6mm (14GA), ball size - 5mm

Lenght - 12mm (1/2"), Color - Clear/VM, Thickness - 1,6mm (14GA), ball size - 5mm

Lenght - 12mm (1/2"), Color - Clear/pink, Thickness - 1,6mm (14GA), ball size - 5mm

# Nipple



## Nipple Barbell With Set CZ and Balls

Reference : 0085

Material: Implant Grade Titanium Plating: PVD Stone Material: CZ

Lenght - 14mm (9/16"), Color - Clear, Thickness - 1,6mm (14GA)



## Nipple Barbell Opal

Reference : 0082

Material: Implant Grade Titanium Stone Material: Synthetic Opal

Lenght - 14mm (9/16"), Color - White (OP #17), Thickness - 1,6mm (14GA)

Lenght - 14mm (9/16"), Color - Blue (OP #05), Thickness - 1,6mm (14GA)



## Nipple Barbell With 5 Bezel Set CZ

Reference : 0081

Material: Implant Grade Titanium Stone Material: CZ

Lenght - 14mm (9/16"), Color - Clear, Thickness - 1,6mm (14GA)

# AIMIA

BODY JEWELRY

Email : [info@aimiabodyjewelry.com](mailto:info@aimiabodyjewelry.com)

