

AIMIA

BODY JEWELRY

Catalog
14/09/2024

Table of contents

4 **Basic**

13 **Segment**

31 **Labret**

42 **Belly Button**

49 **Barbell**

51 **Tops**

81 **Nose**

83 **Dermal**

84

Nipple



Jewelled Disc Christian

Reference : 1276

Material: Implant Grade Titanium Plating: PVD Stone Material: CZ

Lenght - 12mm (1/2"), Color - Clear, Thickness - 1,6mm (14GA), ball size - 5mm

Lenght - 14mm (9/16"), Color - Clear, Thickness - 1,6mm (14GA), ball size - 5mm

Lenght - 16mm (5/8"), Color - Clear, Thickness - 1,6mm (14GA), ball size - 5mm



Christina Disc

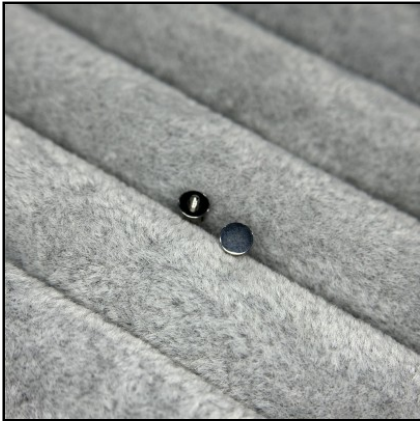
Reference : 1275

Material: Implant Grade Titanium Plating: PVD

Lenght - 12mm (1/2"), Color - Silver, Thickness - 1,6mm (14GA), ball size - 5mm

Lenght - 14mm (9/16"), Color - Silver, Thickness - 1,6mm (14GA), ball size - 5mm

Lenght - 16mm (5/8"), Color - Silver, Thickness - 1,6mm (14GA), ball size - 5mm



Disk

Reference : TA-0018

Labret not included Material: Implant Grade Titanium

Color - Silver, Thickness - 1,2mm (16GA), ball size - 3mm

Color - PVD Gold 18k, Thickness - 1,2mm (16GA), ball size - 3mm

Color - Silver, Thickness - 1,2mm (16GA), ball size - 4mm

Color - PVD Gold 18k, Thickness - 1,2mm (16GA), ball size - 4mm

Color - Silver, Thickness - 1,6mm (14GA), ball size - 3mm

Color - PVD Gold 18k, Thickness - 1,6mm (14GA), ball size - 3mm

Color - Silver, Thickness - 1,6mm (14GA), ball size - 4mm

Color - PVD Gold 18k, Thickness - 1,6mm (14GA), ball size - 4mm



Big Size Segment

Reference : 1021

Material: Implant Grade Titanium

Lenght - 10mm (3/8") , Color - Silver, Thickness - 2mm

Lenght - 12mm (1/2") , Color - Silver, Thickness - 2mm

Lenght - 14mm (9/16") , Color - Silver, Thickness - 2mm

Lenght - 10mm (3/8") , Color - Silver, Thickness - 2,5mm

Lenght - 12mm (1/2") , Color - Silver, Thickness - 2,5mm

Lenght - 14mm (9/16") , Color - Silver, Thickness - 2,5mm

Lenght - 12mm (1/2") , Color - Silver, Thickness - 3mm



Big Size Horseshoe

Reference : 1019

Material: Implant Grade Titanium

Lenght - 10mm (3/8") , Color - Silver, Thickness - 2mm, ball size - 5mm
Lenght - 10mm (3/8") , Color - Silver, Thickness - 2,5mm, ball size - 5mm
Lenght - 12mm (1/2") , Color - Silver, Thickness - 2mm, ball size - 5mm
Lenght - 12mm (1/2") , Color - Silver, Thickness - 2,5mm, ball size - 5mm
Lenght - 14mm (9/16") , Color - Silver, Thickness - 2mm, ball size - 5mm
Lenght - 14mm (9/16") , Color - Silver, Thickness - 2,5mm, ball size - 5mm
Lenght - 12mm (1/2") , Color - Silver, Thickness - 3mm, ball size - 6mm



Externally Threaded CZ Belly Button

Reference : C100

Material: Implant Grade Titanium

Lenght - 10mm (3/8") , Color - Clear, Thickness - 1,6mm (14GA), ball size - 5 & 8 mm
Lenght - 12mm (1/2") , Color - Clear, Thickness - 1,6mm (14GA), ball size - 5 & 8 mm



Externally Threaded CZ Ball

Reference : C031

Material: Implant Grade Titanium

Color - Clear, Thickness - 1,2mm (16GA), ball size - 3mm
Color - Clear, Thickness - 1,6mm (14GA), ball size - 4mm



Externally Threaded Ball

Reference : C029

Material: Implant Grade Titanium

Color - Silver, Thickness - 1,2mm (16GA), ball size - 3mm
Color - Silver, Thickness - 1,6mm (14GA), ball size - 3mm
Color - Silver, Thickness - 1,2mm (16GA), ball size - 4mm
Color - Silver, Thickness - 1,6mm (14GA), ball size - 4mm
Color - Silver, Thickness - 1,6mm (14GA), ball size - 5mm



Externally Threaded labret

Reference : C011

Material: Implant Grade Titanium

Lenght - 5mm (3/16"), Color - Silver, Thickness - 1,2mm (16GA), ball size - 3mm
Lenght - 6mm (1/4"), Color - Silver, Thickness - 1,2mm (16GA), ball size - 3mm
Lenght - 7mm (9/32"), Color - Silver, Thickness - 1,2mm (16GA), ball size - 3mm
Lenght - 8mm (5/16"), Color - Silver, Thickness - 1,2mm (16GA), ball size - 3mm
Lenght - 10mm (3/8") , Color - Silver, Thickness - 1,2mm (16GA), ball size - 3mm
Lenght - 12mm (1/2") , Color - Silver, Thickness - 1,2mm (16GA), ball size - 3mm
Lenght - 6mm (1/4") , Color - Silver, Thickness - 1,6mm (14GA), ball size - 3mm



BCR BALL

Reference : C0B9

Material: Implant Grade Titanium

Color - Silver, ball size - 3mm

Color - Silver, ball size - 4mm



BCR

Reference : C009

Material: Implant Grade Titanium

Lenght - 8mm (5/16"), Color - Silver, Thickness - 1,2mm (16GA), ball size - 3mm
Lenght - 10mm (3/8") , Color - Silver, Thickness - 1,2mm (16GA), ball size - 3mm
Lenght - 12mm (1/2") , Color - Silver, Thickness - 1,2mm (16GA), ball size - 3mm
Lenght - 8mm (5/16"), Color - Silver, Thickness - 1,6mm (14GA), ball size - 3mm
Lenght - 14mm (9/16"), Color - Silver, Thickness - 1,2mm (16GA), ball size - 4mm
Lenght - 10mm (3/8") , Color - Silver, Thickness - 1,6mm (14GA), ball size - 4mm
Lenght - 12mm (1/2") , Color - Silver, Thickness - 1,6mm (14GA), ball size - 4mm
Lenght - 16mm (5/8") , Color - Silver, Thickness - 1,6mm (14GA), ball size - 4mm



Externally Threaded Belly Button

Reference : C0B5

Material: Implant Grade Titanium

Lenght - 10mm (3/8") , Color - Silver, Thickness - 1,6mm (14GA), ball size - 4 & 6 mm
Lenght - 12mm (1/2") , Color - Silver, Thickness - 1,6mm (14GA), ball size - 4 & 6 mm

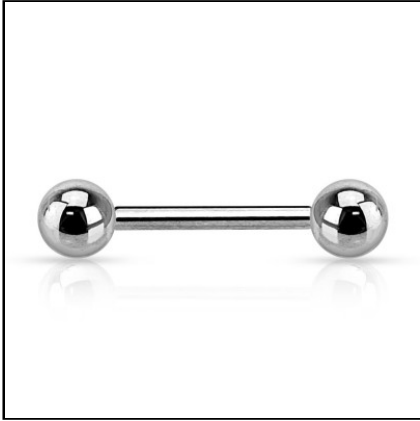


Externally Threaded Curved Barbell

Reference : C005

Material: Implant Grade Titanium

Lenght - 6mm (1/4"), Color - Silver, Thickness - 1,2mm (16GA), ball size - 3mm
Lenght - 8mm (5/16"), Color - Silver, Thickness - 1,2mm (16GA), ball size - 3mm
Lenght - 10mm (3/8"), Color - Silver, Thickness - 1,2mm (16GA), ball size - 3mm
Lenght - 12mm (1/2"), Color - Silver, Thickness - 1,2mm (16GA), ball size - 3mm
Lenght - 6mm (1/4"), Color - Silver, Thickness - 1,6mm (14GA), ball size - 3mm
Lenght - 8mm (5/16"), Color - Silver, Thickness - 1,6mm (14GA), ball size - 3mm
Lenght - 10mm (3/8"), Color - Silver, Thickness - 1,6mm (14GA), ball size - 4mm
Lenght - 12mm (1/2"), Color - Silver, Thickness - 1,6mm (14GA), ball size - 4mm



Externally threaded Barbell with balls

Reference : C001

Material: Implant Grade Titanium

Lenght - 6mm (1/4"), Color - Silver, Thickness - 1,6mm (14GA), ball size - 3mm
Lenght - 8mm (5/16"), Color - Silver, Thickness - 1,6mm (14GA), ball size - 3mm
Lenght - 10mm (3/8"), Color - Silver, Thickness - 1,6mm (14GA), ball size - 3mm
Lenght - 12mm (1/2"), Color - Silver, Thickness - 1,6mm (14GA), ball size - 4mm
Lenght - 14mm (9/16"), Color - Silver, Thickness - 1,6mm (14GA), ball size - 4mm
Lenght - 16mm (5/8"), Color - Silver, Thickness - 1,6mm (14GA), ball size - 4mm
Lenght - 18mm, Color - Silver, Thickness - 1,6mm (14GA), ball size - 5mm

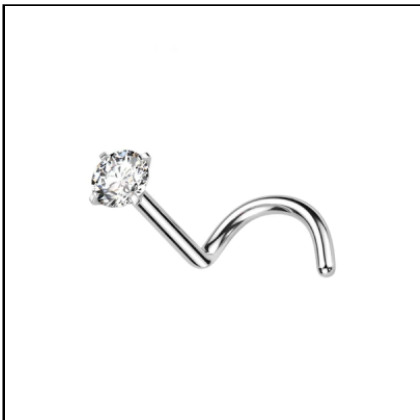


Surface with tops

Reference : 1010

Material: Implant Grade Titanium Plating: PVD

Lenght - 18mm, Color - Silver, Thickness - 1,6mm (14GA), ball size - 4mm
Lenght - 18mm, Color - PVD Gold 18k, Thickness - 1,6mm (14GA), ball size - 4mm
Lenght - 18mm, Color - PVD Black, Thickness - 1,6mm (14GA), ball size - 4mm
Lenght - 16mm (5/8"), Color - Silver, Thickness - 1,6mm (14GA), ball size - 4mm
Lenght - 14mm (9/16"), Color - Silver, Thickness - 1,6mm (14GA), ball size - 4mm



Nose Screw

Reference : 0168

Material: Implant Grade Titanium Plating: PVD Stone Material: CZ

Lenght - 6mm (1/4"), Color - Clear, Thickness - 0,8mm (20GA), ball size - 2mm
Lenght - 6mm (1/4"), Color - PVD Gold 18k/Clear, Thickness - 0,8mm (20GA), ball size - 2mm
Lenght - 6mm (1/4"), Color - Clear, Thickness - 0,8mm (20GA), ball size - 2.5mm
Lenght - 6mm (1/4"), Color - PVD Gold 18k/Clear, Thickness - 0,8mm (20GA), ball size - 2.5mm
Lenght - 6mm (1/4"), Color - Clear, Thickness - 0,8mm (20GA), ball size - 3mm
Lenght - 6mm (1/4"), Color - PVD Gold 18k/Clear, Thickness - 0,8mm (20GA), ball size - 3mm



Hoop 2 balls

Reference : 0038

Material: Implant Grade Titanium

Lenght - 6mm (1/4"), Color - Silver, Thickness - 1,2mm (16GA), ball size - 3mm
 Lenght - 8mm (5/16"), Color - Silver, Thickness - 1,2mm (16GA), ball size - 3mm
 Lenght - 10mm (3/8") , Color - Silver, Thickness - 1,2mm (16GA), ball size - 3mm
 Lenght - 12mm (1/2") , Color - Silver, Thickness - 1,2mm (16GA), ball size - 3mm
 Lenght - 8mm (5/16") , Color - PVD Gold 18k, Thickness - 1,2mm (16GA), ball size - 3mm
 Lenght - 8mm (5/16") , Color - PVD Black, Thickness - 1,2mm (16GA), ball size - 3mm



Threadless Push Pin Labret

Reference : 0392

Material: Implant Grade Titanium Threadless Pushin

Lenght - 6mm (1/4") , Color - PVD Gold 18k, Thickness - 1,2mm (16GA), Base - 3mm
 Lenght - 8mm (5/16") , Color - PVD Gold 18k, Thickness - 1,2mm (16GA), Base - 3mm
 Lenght - 10mm (3/8") , Color - PVD Gold 18k, Thickness - 1,2mm (16GA), Base - 3mm
 Lenght - 6mm (1/4") , Color - Silver, Thickness - 1,2mm (16GA), Base - 3mm
 Lenght - 7mm (9/32") , Color - Silver, Thickness - 1,2mm (16GA), Base - 3mm
 Lenght - 8mm (5/16") , Color - Silver, Thickness - 1,2mm (16GA), Base - 3mm



Threadless Ball

Reference : 0398

Material: Implant Grade Titanium

Color - Silver, ball size - 2mm
 Color - Silver, ball size - 3mm
 Color - Silver, ball size - 4mm
 Color - PVD Gold 18k, ball size - 2mm
 Color - PVD Gold 18k, ball size - 3mm
 Color - Silver, ball size - 2.5mm
 Color - PVD Gold 18k, ball size - 2.5mm
 Color - PVD Gold 18k, ball size - 4mm

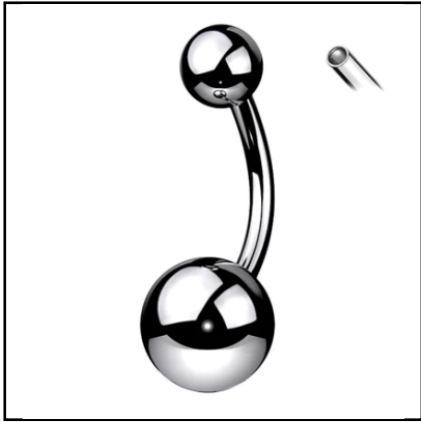


Belly Button

Reference : 0046

Material: Implant Grade Titanium Plating: PVD Stone Material: CZ

Lenght - 10mm (3/8") , Color - Clear, Thickness - 1,6mm (14GA), ball size - 5 & 8 mm
 Lenght - 10mm (3/8") , Color - PVD Gold 18k/Clear, Thickness - 1,6mm (14GA), ball size - 5 & 8
 Lenght - 10mm (3/8") , Color - PVD Black/Clear, Thickness - 1,6mm (14GA), ball size - 5 & 8
 Lenght - 10mm (3/8") , Color - Clear, Thickness - 1,6mm (14GA), ball size - 4 & 6 mm
 Lenght - 8mm (5/16") , Color - Clear, Thickness - 1,6mm (14GA), ball size - 4 & 6 mm
 Lenght - 12mm (1/2") , Color - Clear, Thickness - 1,6mm (14GA), ball size - 5 & 8 mm
 Lenght - 12mm (1/2") , Color - PVD Gold 18k/Clear, Thickness - 1,6mm (14GA), ball size - 5 & 8



Belly Button Ring

Reference : 0534

Material: Implant Grade Titanium

Lenght - 10mm (3/8") , Color - Silver, Thickness - 1,6mm (14GA) , ball size - 5 & 8 mm

Lenght - 12mm (1/2") , Color - Silver, Thickness - 1,6mm (14GA) , ball size - 5 & 8 mm

Lenght - 10mm (3/8") , Color - Silver, Thickness - 1,6mm (14GA) , ball size - 4 & 6 mm



Internal Thread Barbell With Balls

Reference : 0039

Material: Implant Grade Titanium

Lenght - 8mm (5/16") , Color - Silver, Thickness - 1,2mm (16GA) , ball size - 3mm

Lenght - 10mm (3/8") , Color - Silver, Thickness - 1,2mm (16GA) , ball size - 3mm

Lenght - 12mm (1/2") , Color - Silver, Thickness - 1,2mm (16GA) , ball size - 3mm

Lenght - 14mm (9/16") , Color - Silver, Thickness - 1,2mm (16GA) , ball size - 4mm

Lenght - 12mm (1/2") , Color - Silver, Thickness - 1,6mm (14GA) , ball size - 4mm

Lenght - 14mm (9/16") , Color - Silver, Thickness - 1,6mm (14GA) , ball size - 4mm



Bendable Hoop

Reference : 0203

Material: Implant Grade Titanium

Lenght - 6mm (1/4") , Color - PVD Gold 18k, Thickness - 0,8mm (20GA)

Lenght - 6mm (1/4") , Color - PVD Black, Thickness - 0,8mm (20GA)

Lenght - 7mm (9/32") , Color - PVD Gold 18k, Thickness - 0,8mm (20GA)

Lenght - 7mm (9/32") , Color - PVD Black, Thickness - 0,8mm (20GA)

Lenght - 8mm (5/16") , Color - PVD Gold 18k, Thickness - 0,8mm (20GA)

Lenght - 8mm (5/16") , Color - PVD Black, Thickness - 0,8mm (20GA)

Lenght - 10mm (3/8") , Color - PVD Gold 18k, Thickness - 0,8mm (20GA)

Lenght - 10mm (3/8") , Color - PVD Black, Thickness - 0,8mm (20GA)



Curved Barbell

Reference : 0037

Material: Implant Grade Titanium 1.2 (16 GA) 1.6 (14GA)

Lenght - 6mm (1/4") , Color - Silver, Thickness - 1,2mm (16GA) , ball size - 3mm

Lenght - 8mm (5/16") , Color - Silver, Thickness - 1,2mm (16GA) , ball size - 3mm

Lenght - 10mm (3/8") , Color - Silver, Thickness - 1,2mm (16GA) , ball size - 3mm

Lenght - 12mm (1/2") , Color - Silver, Thickness - 1,2mm (16GA) , ball size - 3mm

Lenght - 10mm (3/8") , Color - Silver, Thickness - 1,6mm (14GA) , ball size - 5mm

Lenght - 12mm (1/2") , Color - Silver, Thickness - 1,6mm (14GA) , ball size - 5mm



Ball Top Labret 4mm base

Reference : 0041

Material: Implant Grade Titanium 1.2 (16 GA)

Lenght - 6mm (1/4"), Color - Silver, Thickness - 1,2mm (16GA), ball size - 3mm
 Lenght - 8mm (5/16"), Color - Silver, Thickness - 1,2mm (16GA), ball size - 3mm
 Lenght - 10mm (3/8") , Color - Silver, Thickness - 1,2mm (16GA), ball size - 3mm
 Lenght - 12mm (1/2") , Color - Silver, Thickness - 1,2mm (16GA), ball size - 3mm
 Lenght - 6mm (1/4") , Color - PVD Gold 18k, Thickness - 1,2mm (16GA), ball size - 3mm
 Lenght - 8mm (5/16") , Color - PVD Gold 18k, Thickness - 1,2mm (16GA), ball size - 3mm
 Lenght - 10mm (3/8") , Color - PVD Gold 18k, Thickness - 1,2mm (16GA), ball size - 3mm



CZ Nose Screw

Reference : 0050

Material: Implant Grade Titanium Stone Material: CZ

Lenght - 6mm (1/4") , Color - Clear, Thickness - 0,8mm (20GA), ball size - 2mm
 Lenght - 6mm (1/4") , Color - Clear/pink, Thickness - 0,8mm (20GA), ball size - 2mm
 Lenght - 6mm (1/4") , Color - Clear/Purple, Thickness - 0,8mm (20GA), ball size - 2mm
 Lenght - 6mm (1/4") , Color - Clear/Aqua, Thickness - 0,8mm (20GA), ball size - 2mm
 Lenght - 6mm (1/4") , Color - Clear/Blue, Thickness - 0,8mm (20GA), ball size - 2mm
 Lenght - 6mm (1/4") , Color - PVD Gold 18k/Clear, Thickness - 0,8mm (20GA), ball size - 2mm

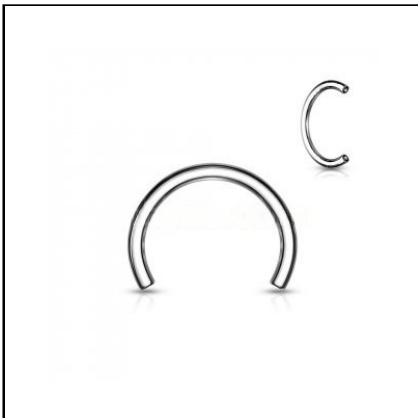


4mm Base Labret

Reference : 0185

Material: Implant Grade Titanium Plating: PVD Stone Material: CZ

Lenght - 6mm (1/4") , Color - Clear, Thickness - 1,2mm (16GA), ball size - 2mm
 Lenght - 6mm (1/4") , Color - Clear, Thickness - 1,2mm (16GA), ball size - 2.5mm
 Lenght - 6mm (1/4") , Color - Clear, Thickness - 1,2mm (16GA), ball size - 3mm
 Lenght - 8mm (5/16") , Color - Clear, Thickness - 1,2mm (16GA), ball size - 2mm
 Lenght - 8mm (5/16") , Color - Clear, Thickness - 1,2mm (16GA), ball size - 2.5mm
 Lenght - 8mm (5/16") , Color - Clear, Thickness - 1,2mm (16GA), ball size - 3mm
 Lenght - 6mm (1/4") , Color - PVD Gold 18k/Clear, Thickness - 1,2mm (16GA), ball size - 2mm



Horseshoe Circular Barbell Pins

Reference : TA-0026

Material: Implant Grade Titanium 1.2 (16 GA) 1.6 (14GA)

Lenght - 6mm (1/4") , Color - Silver, Thickness - 1,2mm (16GA)
 Lenght - 7mm (9/32") , Color - Silver, Thickness - 1,2mm (16GA)
 Lenght - 8mm (5/16") , Color - Silver, Thickness - 1,2mm (16GA)
 Lenght - 9mm (11/32") , Color - Silver, Thickness - 1,2mm (16GA)
 Lenght - 10mm (3/8") , Color - Silver, Thickness - 1,2mm (16GA)
 Lenght - 12mm (1/2") , Color - Silver, Thickness - 1,2mm (16GA)



3 Hole Dermal Anchor

Reference : TA-0010

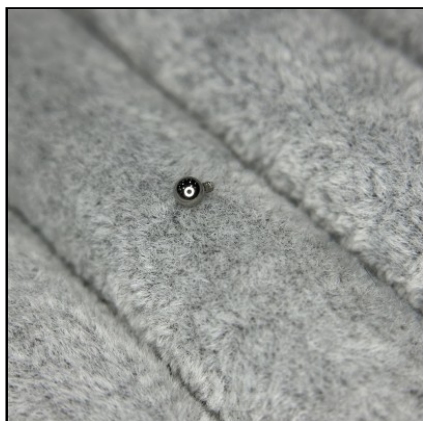
Material: Implant Grade Titanium 1.2 (16 GA) 1.6 (14GA)

Thickness - 1,2mm (16GA), Height - 2.5mm

Thickness - 1,2mm (16GA), Height - 3mm

Thickness - 1,6mm (14GA), Height - 2.5mm

Thickness - 1,6mm (14GA), Height - 3mm



Internal Thread Balls

Reference : TA-0011

Material: Implant Grade Titanium 1.2 (16 GA) 1.6 (14GA)

Color - Silver, Thickness - 1,2mm (16GA), ball size - 2mm

Color - Silver, Thickness - 1,2mm (16GA), ball size - 2.5mm

Color - Silver, Thickness - 1,2mm (16GA), ball size - 3mm

Color - Silver, Thickness - 1,2mm (16GA), ball size - 4mm

Color - Silver, Thickness - 1,2mm (16GA), ball size - 5mm

Color - Silver, Thickness - 1,6mm (14GA), ball size - 3mm

Color - Silver, Thickness - 1,6mm (14GA), ball size - 4mm



Dome Nose Screw

Reference : 0273

Material: Implant Grade Titanium 2mm top

Lenght - 6mm (1/4"), Color - PVD Gold 18k, Thickness - 0,8mm (20GA)

Lenght - 6mm (1/4"), Color - Silver, Thickness - 0,8mm (20GA)

Lenght - 6mm (1/4"), Color - PVD Black, Thickness - 0,8mm (20GA)



Ball Nose Screw

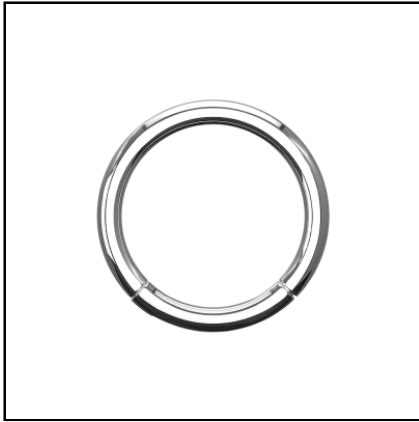
Reference : 0272

Material: Implant Grade Titanium 2mm ball

Lenght - 6mm (1/4"), Color - PVD Gold 18k, Thickness - 0,8mm (20GA)

Lenght - 6mm (1/4"), Color - Silver, Thickness - 0,8mm (20GA)

Lenght - 6mm (1/4"), Color - Silver, Thickness - 1mm (18GA)



Hinged Segment Ring

Reference : 0058

Material: Implant Grade Titanium 0.8 mm (20 GA) 1 mm (18 GA) 1.2 mm (16 GA)

Lenght - 6mm (1/4"), Color - Silver, Thickness - 1,2mm (16GA)
Lenght - 7mm (9/32"), Color - Silver, Thickness - 1,2mm (16GA)
Lenght - 8mm (5/16"), Color - Silver, Thickness - 1,2mm (16GA)
Lenght - 9mm (11/32"), Color - Silver, Thickness - 1,2mm (16GA)
Lenght - 10mm (3/8") , Color - Silver, Thickness - 1,2mm (16GA)
Lenght - 11mm (7/16") , Color - Silver, Thickness - 1,2mm (16GA)

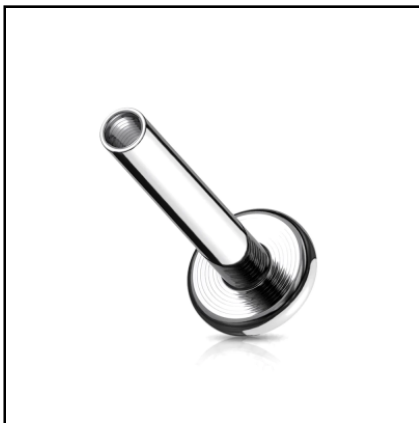


Flat Bezel Set Crystal Top

Reference : TA-0015

Labret not included Material: Implant Grade Titanium Stone Material: CZ

Color - Clear, Thickness - 1,2mm (16GA), ball size - 3mm
Color - Clear, Thickness - 1,6mm (14GA), ball size - 3mm
Color - Clear, Thickness - 1,2mm (16GA), ball size - 4mm
Color - Clear, Thickness - 1,6mm (14GA), ball size - 4mm
Color - Clear, Thickness - 1,2mm (16GA), ball size - 5mm
Color - Clear, Thickness - 1,6mm (14GA), ball size - 5mm
Color - Clear/AB, Thickness - 1,2mm (16GA), ball size - 3mm



3mm Base Labret

Reference : TA-0029

Material: Implant Grade Titanium 1mm (18 GA) 1.2 (16 GA) Please note this item is Internally Threaded. Not compatible with the threadless jewelry parts

Lenght - 6mm (1/4"), Color - PVD Gold 18k, Thickness - 1,2mm (16GA)
Lenght - 8mm (5/16"), Color - PVD Gold 18k, Thickness - 1,2mm (16GA)
Lenght - 10mm (3/8") , Color - PVD Gold 18k, Thickness - 1,2mm (16GA)
Lenght - 12mm (1/2") , Color - PVD Gold 18k, Thickness - 1,2mm (16GA)
Lenght - 6mm (1/4"), Color - PVD Black, Thickness - 1,2mm (16GA)
Lenght - 8mm (5/16") , Color - PVD Black, Thickness - 1,2mm (16GA)



CZ Ring Spike

Reference : 1369

Material: Implant Grade Titanium Plating: PVD Stone Material: CZ

Lenght - 8mm (5/16"), Color - Clear, Thickness - 1,2mm (16GA)

Lenght - 8mm (5/16"), Color - PVD Gold 18k/Clear, Thickness - 1,2mm (16GA)



Quares

Reference : 1324

Material: Implant Grade Titanium Plating: PVD Stone Material: CZ

Lenght - 8mm (5/16"), Color - Clear, Thickness - 1,2mm (16GA)

Lenght - 8mm (5/16"), Color - PVD Gold 18k/Clear, Thickness - 1,2mm (16GA)



Sequare

Reference : 1323

Material: Implant Grade Titanium Plating: PVD Stone Material: CZ

Lenght - 8mm (5/16"), Color - Clear, Thickness - 1,2mm (16GA)

Lenght - 8mm (5/16"), Color - PVD Gold 18k/Clear, Thickness - 1,2mm (16GA)



Sequette

Reference : 1259

Material: Implant Grade Titanium Plating: PVD Stone Material: CZ

Lenght - 8mm (5/16"), Color - Clear, Thickness - 1,2mm (16GA)

Lenght - 8mm (5/16"), Color - PVD Gold 18k/Clear, Thickness - 1,2mm (16GA)

Segment



Bagseg

Reference : 1033

Material: Implant Grade Titanium Plating: PVD Stone Material: CZ

Lenght - 8mm (5/16"), Color - Clear, Thickness - 1,2mm (16GA)

Lenght - 8mm (5/16"), Color - PVD Gold 18k/Clear, Thickness - 1,2mm (16GA)

Lenght - 10mm (3/8") , Color - Clear, Thickness - 1,2mm (16GA)

Lenght - 10mm (3/8") , Color - PVD Gold 18k/Clear, Thickness - 1,2mm (16GA)



Prongseg

Reference : 1491

Material: Implant Grade Titanium Plating: PVD Stone Material: CZ

Lenght - 8mm (5/16"), Color - Clear, Thickness - 1,2mm (16GA)

Lenght - 8mm (5/16"), Color - PVD Gold 18k/Clear, Thickness - 1,2mm (16GA)



SUN SEGMENT

Reference : 1518

Material: Implant Grade Titanium Plating: PVD Stone Material: CZ

Lenght - 8mm (5/16"), Color - Clear, Thickness - 1,2mm (16GA)

Lenght - 8mm (5/16"), Color - PVD Gold 18k/Clear, Thickness - 1,2mm (16GA)

Lenght - 10mm (3/8") , Color - Clear, Thickness - 1,2mm (16GA)

Lenght - 10mm (3/8") , Color - PVD Gold 18k/Clear, Thickness - 1,2mm (16GA)



Bumped Segment

Reference : 1464

Material: Implant Grade Titanium Stone Material: CZ

Lenght - 8mm (5/16"), Color - Silver, Thickness - 1,2mm (16GA)

Lenght - 8mm (5/16"), Color - PVD Gold 18k, Thickness - 1,2mm (16GA)



Square CZ Segment

Reference : 1534

Material: Implant Grade Titanium Stone Material: CZ

Lenght - 8mm (5/16"), Color - Clear, Thickness - 1,2mm (16GA)



Snake CZ Segment

Reference : 1530

Material: Implant Grade Titanium Stone Material: CZ

Lenght - 8mm (5/16"), Color - Clear, Thickness - 1,2mm (16GA)

Lenght - 10mm (3/8") , Color - Clear, Thickness - 1,2mm (16GA)



Chain Spike Segment

Reference : 1568

Material: Implant Grade Titanium Stone Material: CZ

Lenght - 8mm (5/16"), Color - Silver, Thickness - 1,2mm (16GA)

Lenght - 8mm (5/16") , Color - PVD Gold 18k, Thickness - 1,2mm (16GA)



Twist CZ segment

Reference : 0698

Material: Implant Grade Titanium Stone Material: CZ

Lenght - 8mm (5/16"), Color - Clear, Thickness - 1,2mm (16GA)

Lenght - 8mm (5/16") , Color - PVD Gold 18k/Clear, Thickness - 1,2mm (16GA)

Lenght - 10mm (3/8") , Color - Clear, Thickness - 1,2mm (16GA)

Lenght - 10mm (3/8") , Color - PVD Gold 18k/Clear, Thickness - 1,2mm (16GA)



Big Size Segment

Reference : 1021

Material: Implant Grade Titanium

Lenght - 10mm (3/8") , Color - Silver, Thickness - 2mm
 Lenght - 12mm (1/2") , Color - Silver, Thickness - 2mm
 Lenght - 14mm (9/16") , Color - Silver, Thickness - 2mm
 Lenght - 10mm (3/8") , Color - Silver, Thickness - 2,5mm
 Lenght - 12mm (1/2") , Color - Silver, Thickness - 2,5mm
 Lenght - 14mm (9/16") , Color - Silver, Thickness - 2,5mm
 Lenght - 12mm (1/2") , Color - Silver, Thickness - 3mm



Big Size Horseshoe

Reference : 1019

Material: Implant Grade Titanium

Lenght - 10mm (3/8") , Color - Silver, Thickness - 2mm, ball size - 5mm
 Lenght - 10mm (3/8") , Color - Silver, Thickness - 2,5mm, ball size - 5mm
 Lenght - 12mm (1/2") , Color - Silver, Thickness - 2mm, ball size - 5mm
 Lenght - 12mm (1/2") , Color - Silver, Thickness - 2,5mm, ball size - 5mm
 Lenght - 14mm (9/16") , Color - Silver, Thickness - 2mm, ball size - 5mm
 Lenght - 14mm (9/16") , Color - Silver, Thickness - 2,5mm, ball size - 5mm
 Lenght - 12mm (1/2") , Color - Silver, Thickness - 3mm, ball size - 6mm



Externally Threaded hoop 2 ball

Reference : C015

Material: Implant Grade Titanium

Lenght - 6mm (1/4") , Color - Silver, Thickness - 1,2mm (16GA), ball size - 3mm
 Lenght - 8mm (5/16") , Color - Silver, Thickness - 1,2mm (16GA), ball size - 3mm
 Lenght - 10mm (3/8") , Color - Silver, Thickness - 1,2mm (16GA), ball size - 3mm
 Lenght - 12mm (1/2") , Color - Silver, Thickness - 1,2mm (16GA), ball size - 3mm
 Lenght - 8mm (5/16") , Color - Silver, Thickness - 1,6mm (14GA), ball size - 3mm
 Lenght - 10mm (3/8") , Color - Silver, Thickness - 1,6mm (14GA), ball size - 3mm
 Lenght - 12mm (1/2") , Color - Silver, Thickness - 1,6mm (14GA), ball size - 4mm



BCR

Reference : C009

Material: Implant Grade Titanium

Lenght - 8mm (5/16") , Color - Silver, Thickness - 1,2mm (16GA), ball size - 3mm
 Lenght - 10mm (3/8") , Color - Silver, Thickness - 1,2mm (16GA), ball size - 3mm
 Lenght - 12mm (1/2") , Color - Silver, Thickness - 1,2mm (16GA), ball size - 3mm
 Lenght - 8mm (5/16") , Color - Silver, Thickness - 1,6mm (14GA), ball size - 3mm
 Lenght - 14mm (9/16") , Color - Silver, Thickness - 1,2mm (16GA), ball size - 4mm
 Lenght - 10mm (3/8") , Color - Silver, Thickness - 1,6mm (14GA), ball size - 4mm
 Lenght - 12mm (1/2") , Color - Silver, Thickness - 1,6mm (14GA), ball size - 4mm
 Lenght - 16mm (5/8") , Color - Silver, Thickness - 1,6mm (14GA), ball size - 4mm



CZ Earring 2mm

Reference : 1298

Material: Implant Grade Titanium Stone Material: CZ

Lenght - 8mm (5/16"), Color - Clear, Thickness - 1,2mm (16GA)

Lenght - 8mm (5/16"), Color - PVD Gold 18k/Clear, Thickness - 1,2mm (16GA)

Lenght - 10mm (3/8") , Color - Clear, Thickness - 1,2mm (16GA)

Lenght - 10mm (3/8") , Color - PVD Gold 18k/Clear, Thickness - 1,2mm (16GA)



Earring 2mm

Reference : 1299

Material: Implant Grade Titanium

Lenght - 8mm (5/16"), Color - Silver, Thickness - 1,2mm (16GA)

Lenght - 8mm (5/16"), Color - PVD Gold 18k, Thickness - 1,2mm (16GA)

Lenght - 10mm (3/8") , Color - Silver, Thickness - 1,2mm (16GA)

Lenght - 10mm (3/8") , Color - PVD Gold 18k, Thickness - 1,2mm (16GA)

Lenght - 12mm (1/2") , Color - Silver, Thickness - 1,2mm (16GA)

Lenght - 12mm (1/2") , Color - PVD Gold 18k, Thickness - 1,2mm (16GA)



3 lines hoop

Reference : 1321

Material: Implant Grade Titanium Stone Material: CZ

Lenght - 8mm (5/16"), Color - Silver, Thickness - 1,2mm (16GA)



Paved segment with cz bar

Reference : 1371

Material: Implant Grade Titanium Plating: PVD Stone Material: CZ

Lenght - 8mm (5/16"), Color - Clear, Thickness - 1,2mm (16GA)

Lenght - 8mm (5/16"), Color - PVD Gold 18k/Clear, Thickness - 1,2mm (16GA)



Hoop Mix 11 CZ

Reference : 1395

Material: Implant Grade Titanium Stone Material: CZ

Lenght - 8mm (5/16"), Color - Clear, Thickness - 1,2mm (16GA)



Paved Segment With Prong

Reference : 1370

Material: Implant Grade Titanium Stone Material: CZ

Lenght - 8mm (5/16"), Color - Clear, Thickness - 1,2mm (16GA)



Paved Segment With Marquise

Reference : 1368

Material: Implant Grade Titanium Stone Material: CZ

Lenght - 8mm (5/16"), Color - Clear, Thickness - 1,2mm (16GA)



Lots of CZ Covered Face

Reference : 1322

Material: Implant Grade Titanium Stone Material: CZ

Lenght - 8mm (5/16"), Color - Clear, Thickness - 1,2mm (16GA)



2 Rectangles CZ and Round CZ Ring

Reference : 1326

Material: Implant Grade Titanium Stone Material: CZ

Lenght - 8mm (5/16"), Color - Clear, Thickness - 1,2mm (16GA)

Lenght - 10mm (3/8") , Color - Clear, Thickness - 1,2mm (16GA)



Segment CZ Marquise Opal

Reference : 0694

Material: Implant Grade Titanium Plating: PVD Stone Material: CZ

Lenght - 8mm (5/16"), Color - White (OP #17), Thickness - 1,2mm (16GA)

Lenght - 8mm (5/16"), Color - Blue (OP #05), Thickness - 1,2mm (16GA)

Lenght - 10mm (3/8") , Color - White (OP #17), Thickness - 1,2mm (16GA)

Lenght - 10mm (3/8") , Color - Blue (OP #05), Thickness - 1,2mm (16GA)



Segment CZ Square cut

Reference : 0582

Material: Implant Grade Titanium Plating: PVD Stone Material: CZ

Lenght - 8mm (5/16"), Color - Clear, Thickness - 1,2mm (16GA)

Lenght - 8mm (5/16"), Color - PVD Gold 18k/Clear, Thickness - 1,2mm (16GA)

Lenght - 10mm (3/8") , Color - Clear, Thickness - 1,2mm (16GA)

Lenght - 10mm (3/8") , Color - PVD Gold 18k/Clear, Thickness - 1,2mm (16GA)



Square Cut Segment

Reference : 0494

Material: Implant Grade Titanium Plating: PVD Stone Material: CZ

Lenght - 8mm (5/16"), Color - Silver, Thickness - 1,2mm (16GA)

Lenght - 8mm (5/16"), Color - PVD Gold 18k, Thickness - 1,2mm (16GA)

Lenght - 10mm (3/8") , Color - Silver, Thickness - 1,2mm (16GA)

Lenght - 10mm (3/8") , Color - PVD Gold 18k, Thickness - 1,2mm (16GA)



Segment CZ Square

Reference : 0468

Material: Implant Grade Titanium Plating: PVD Stone Material: CZ

Lenght - 8mm (5/16"), Color - Clear, Thickness - 1,2mm (16GA)

Lenght - 8mm (5/16"), Color - PVD Gold 18k/Clear, Thickness - 1,2mm (16GA)

Lenght - 10mm (3/8") , Color - Clear, Thickness - 1,2mm (16GA)

Lenght - 10mm (3/8") , Color - PVD Gold 18k/Clear, Thickness - 1,2mm (16GA)



Segment CZ balls

Reference : 0463

Material: Implant Grade Titanium Plating: PVD Stone Material: CZ

Lenght - 8mm (5/16"), Color - Clear, Thickness - 1,2mm (16GA)

Lenght - 8mm (5/16"), Color - PVD Gold 18k/Clear, Thickness - 1,2mm (16GA)

Lenght - 10mm (3/8") , Color - Clear, Thickness - 1,2mm (16GA)

Lenght - 10mm (3/8") , Color - PVD Gold 18k/Clear, Thickness - 1,2mm (16GA)



Oblong Segment

Reference : 0366

Material: Implant Grade Titanium Plating: PVD Stone Material: CZ

Lenght - 8mm (5/16"), Color - Clear, Thickness - 1,2mm (16GA)

Lenght - 8mm (5/16"), Color - PVD Gold 18k/Clear, Thickness - 1,2mm (16GA)

Lenght - 10mm (3/8") , Color - Clear, Thickness - 1,2mm (16GA)

Lenght - 10mm (3/8") , Color - PVD Gold 18k/Clear, Thickness - 1,2mm (16GA)

Lenght - 7mm (9/32") , Color - Clear, Thickness - 1,2mm (16GA)



Prong Set Marquise CZ Hinged Segment Ring ...

Reference : 1244

Material: Implant Grade Titanium Plating: PVD Stone Material: CZ

Lenght - 8mm (5/16"), Color - Clear, Thickness - 1,2mm (16GA)



CZ Paved Side Hinged Segment Ring With Cha...

Reference : 1248

Material: Implant Grade Titanium Plating: PVD Stone Material: CZ

Lenght - 8mm (5/16"), Color - Clear, Thickness - 1,2mm (16GA)

Lenght - 8mm (5/16"), Color - PVD Gold 18k/Clear, Thickness - 1,2mm (16GA)



CZ Paved Face Hinged Segment Ring With 2 C...

Reference : 1246

Material: Implant Grade Titanium Plating: PVD Stone Material: CZ

Lenght - 8mm (5/16"), Color - Clear, Thickness - 1,2mm (16GA)



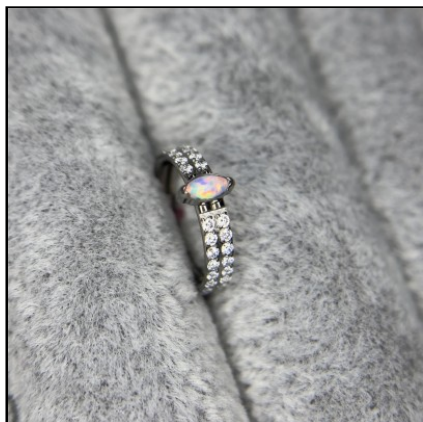
Hinged Segment Ring With Chain Dangle

Reference : 1247

Material: Implant Grade Titanium Plating: PVD Stone Material: CZ

Lenght - 8mm (5/16"), Color - Silver, Thickness - 1,2mm (16GA)

Lenght - 8mm (5/16"), Color - PVD Gold 18k, Thickness - 1,2mm (16GA)



2 Rows CZ Stone Pave Side With Opal Marquis...

Reference : 0732

Material: Implant Grade Titanium Plating: PVD Stone Material: CZ & Opal

Lenght - 8mm (5/16"), Color - OP17+Clear, Thickness - 1,2mm (16GA)

Lenght - 10mm (3/8") , Color - OP17+Clear, Thickness - 1,2mm (16GA)



CZ 3 Sides Segment Ring

Reference : 0825

Material: Implant Grade Titanium Plating: PVD Stone Material: CZ

Lenght - 8mm (5/16"), Color - Clear, Thickness - 1,2mm (16GA)

Lenght - 10mm (3/8") , Color - Clear, Thickness - 1,2mm (16GA)



Segment Ring Hoop With Balls

Reference : 1030

Material: Implant Grade Titanium

Lenght - 8mm (5/16"), Color - Silver, Thickness - 1,2mm (16GA)

Lenght - 10mm (3/8") , Color - Silver, Thickness - 1,2mm (16GA)

Lenght - 8mm (5/16"), Color - PVD Gold 18k, Thickness - 1,2mm (16GA)

Lenght - 10mm (3/8") , Color - PVD Gold 18k, Thickness - 1,2mm (16GA)



CZ Pave Side Cross Design Segment Ring

Reference : 0537

Material: Implant Grade Titanium Stone Material: CZ

Lenght - 8mm (5/16"), Color - Clear, Thickness - 1,2mm (16GA)

Lenght - 8mm (5/16"), Color - PVD Gold 18k/Clear, Thickness - 1,2mm (16GA)

Lenght - 10mm (3/8") , Color - Clear, Thickness - 1,2mm (16GA)

Lenght - 10mm (3/8") , Color - PVD Gold 18k/Clear, Thickness - 1,2mm (16GA)



CZ Paved Hinged Segment Ring Hoop With 15 ...

Reference : 0991

Material: Implant Grade Titanium Stone Material: CZ

Lenght - 8mm (5/16"), Color - Clear, Thickness - 1,2mm (16GA)

Lenght - 8mm (5/16"), Color - PVD Gold 18k/Clear, Thickness - 1,2mm (16GA)



Square Cut Face Segment Ring

Reference : 0495

Material: Implant Grade Titanium Plating: PVD

Lenght - 8mm (5/16"), Color - Silver, Thickness - 1,2mm (16GA)

Lenght - 8mm (5/16"), Color - PVD Gold 18k, Thickness - 1,2mm (16GA)

Lenght - 10mm (3/8") , Color - Silver, Thickness - 1,2mm (16GA)

Lenght - 10mm (3/8") , Color - PVD Gold 18k, Thickness - 1,2mm (16GA)



Double CZ Pave Segment

Reference : 1031

Material: Implant Grade Titanium Plating: PVD Stone Material: CZ

Lenght - 8mm (5/16"), Color - Clear, Thickness - 1,2mm (16GA)

Lenght - 10mm (3/8") , Color - Clear, Thickness - 1,2mm (16GA)



Hinged Segment Hoop Ring Snake

Reference : 0583

Material: Implant Grade Titanium Plating: PVD

Lenght - 8mm (5/16"), Color - Silver, Thickness - 1,2mm (16GA)

Lenght - 8mm (5/16"), Color - PVD Gold 18k, Thickness - 1,2mm (16GA)

Lenght - 10mm (3/8") , Color - Silver, Thickness - 1,2mm (16GA)

Lenght - 10mm (3/8") , Color - PVD Gold 18k, Thickness - 1,2mm (16GA)

Lenght - 8mm (5/16"), Color - PVD Rose Gold, Thickness - 1,2mm (16GA)



Shape Segment Ring With CZ Pave Face

Reference : 0493

Material: Implant Grade Titanium Plating: PVD Stone Material: CZ

Lenght - 8mm (5/16"), Color - Clear, Thickness - 1,2mm (16GA)

Lenght - 8mm (5/16"), Color - PVD Gold 18k/Clear, Thickness - 1,2mm (16GA)

Lenght - 10mm (3/8") , Color - Clear, Thickness - 1,2mm (16GA)

Lenght - 10mm (3/8") , Color - PVD Gold 18k/Clear, Thickness - 1,2mm (16GA)



Clicker Segment Hoop Ring CZ Pave Side

Reference : 0728

Material: Implant Grade Titanium Plating: PVD Stone Material: CZ

Lenght - 8mm (5/16"), Color - Clear, Thickness - 0.8mm/1,2mm

Lenght - 8mm (5/16"), Color - PVD Gold 18k/Clear, Thickness - 0.8mm/1,2mm



CZ Paved Face Shape Segment Ring

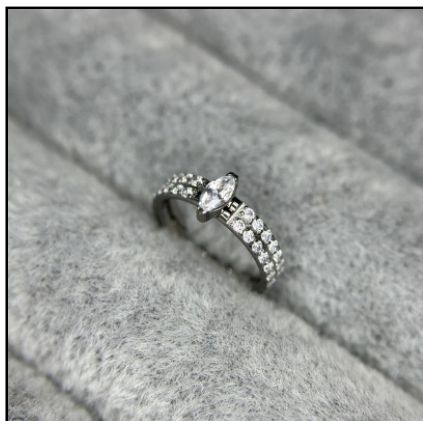
Reference : 0561

Material: Implant Grade Titanium Plating: PVD Stone Material: CZ

Lenght - 8mm (5/16"), Color - Clear, Thickness - 1,2mm (16GA)

Lenght - 10mm (3/8"), Color - Clear, Thickness - 1,2mm (16GA)

Lenght - 8mm (5/16"), Color - PVD Gold 18k/Clear, Thickness - 1,2mm (16GA)



Hinged Segment with marquise stone center

Reference : 0695

Material: Implant Grade Titanium Stone Material: CZ

Lenght - 10mm (3/8"), Color - Clear, Thickness - 1,2mm (16GA)

Lenght - 8mm (5/16"), Color - PVD Gold 18k/Clear, Thickness - 1,2mm (16GA)

Lenght - 8mm (5/16"), Color - Clear, Thickness - 1,2mm (16GA)

Lenght - 10mm (3/8"), Color - PVD Gold 18k/Clear, Thickness - 1,2mm (16GA)



Segment Balls

Reference : 0156

Material: Implant Grade Titanium

Lenght - 8mm (5/16"), Color - Silver, Thickness - 1,2mm (16GA)

Lenght - 10mm (3/8"), Color - Silver, Thickness - 1,2mm (16GA)

Lenght - 8mm (5/16"), Color - PVD Gold 18k, Thickness - 1,2mm (16GA)

Lenght - 10mm (3/8"), Color - PVD Gold 18k/Clear, Thickness - 1,2mm (16GA)



Marquise Stone with cz Segment

Reference : 0693

Material: Implant Grade Titanium Plating: PVD Stone Material: CZ

Lenght - 8mm (5/16"), Color - Clear, Thickness - 1,2mm (16GA)

Lenght - 10mm (3/8") , Color - Clear, Thickness - 1,2mm (16GA)

Lenght - 12mm (1/2") , Color - Clear, Thickness - 1,2mm (16GA)

Lenght - 8mm (5/16") , Color - PVD Gold 18k/Clear, Thickness - 1,2mm (16GA)

Lenght - 10mm (3/8") , Color - PVD Gold 18k/Clear, Thickness - 1,2mm (16GA)

Lenght - 12mm (1/2") , Color - PVD Gold 18k/Clear, Thickness - 1,2mm (16GA)



Opal Stone Center Hinged Segment

Reference : 0692

Material: Implant Grade Titanium Stone Material: Synthetic Opal & CZ

Lenght - 8mm (5/16") , Color - White (OP #17), Thickness - 1,2mm (16GA)

Lenght - 8mm (5/16") , Color - Blue (OP #05), Thickness - 1,2mm (16GA)

Lenght - 10mm (3/8") , Color - White (OP #17), Thickness - 1,2mm (16GA)

Lenght - 10mm (3/8") , Color - Blue (OP #05), Thickness - 1,2mm (16GA)



Stone Center Hinged Segment Hoop

Reference : 0691

Material: Implant Grade Titanium Stone Material: CZ

Lenght - 8mm (5/16") , Color - Clear, Thickness - 1,2mm (16GA)

Lenght - 8mm (5/16") , Color - PVD Gold 18k/Clear, Thickness - 1,2mm (16GA)

Lenght - 10mm (3/8") , Color - Clear, Thickness - 1,2mm (16GA)

Lenght - 10mm (3/8") , Color - PVD Gold 18k/Clear, Thickness - 1,2mm (16GA)



3 Fans Out Side Facing Hinged Segment

Reference : 0471

Material: Implant Grade Titanium

Lenght - 8mm (5/16") , Color - Silver, Thickness - 1,2mm (16GA)

Lenght - 10mm (3/8") , Color - Silver, Thickness - 1,2mm (16GA)



3 Tier Stacked Hinged Clearicker Ring

Reference : 0367

Material: Implant Grade Titanium

Lenght - 8mm (5/16"), Color - Silver, Thickness - 1,2mm (16GA)

Lenght - 10mm (3/8") , Color - Silver, Thickness - 1,2mm (16GA)

Lenght - 8mm (5/16") , Color - PVD Gold 18k, Thickness - 1,2mm (16GA)

Lenght - 10mm (3/8") , Color - PVD Gold 18k, Thickness - 1,2mm (16GA)



Hinged Segment Hoop Ring With Set CZ Pave ...

Reference : 0483

Material: Implant Grade Titanium Stone Material: CZ

Lenght - 8mm (5/16") , Color - Clear, Thickness - 1,2mm (16GA)

Lenght - 8mm (5/16") , Color - PVD Gold 18k/Clear, Thickness - 1,2mm (16GA)

Lenght - 10mm (3/8") , Color - Clear, Thickness - 1,2mm (16GA)

Lenght - 10mm (3/8") , Color - PVD Gold 18k/Clear, Thickness - 1,2mm (16GA)



3 Fans Out Design Side Facing with CZ Pave Hi...

Reference : 0470

Material: Implant Grade Titanium Stone Material: CZ

Lenght - 8mm (5/16") , Color - Clear, Thickness - 1,2mm (16GA)

Lenght - 8mm (5/16") , Color - PVD Gold 18k/Clear, Thickness - 1,2mm (16GA)

Lenght - 10mm (3/8") , Color - Clear, Thickness - 1,2mm (16GA)

Lenght - 10mm (3/8") , Color - PVD Gold 18k/Clear, Thickness - 1,2mm (16GA)



Hinged Segment Rings With 3 Rows CZ Pave S...

Reference : 0465

Material: Implant Grade Titanium Stone Material: CZ

Lenght - 8mm (5/16") , Color - Clear, Thickness - 1,2mm (16GA)

Lenght - 10mm (3/8") , Color - Clear, Thickness - 1,2mm (16GA)

Lenght - 8mm (5/16") , Color - PVD Gold 18k/Clear, Thickness - 1,2mm (16GA)

Lenght - 10mm (3/8") , Color - PVD Gold 18k/Clear, Thickness - 1,2mm (16GA)



Hinged Front Pave CZ Segment Rings with Ball...

Reference : 0462

Material: Implant Grade Titanium Stone Material: CZ

Lenght - 8mm (5/16"), Color - Clear, Thickness - 1,2mm (16GA)

Lenght - 8mm (5/16"), Color - PVD Gold 18k/Clear, Thickness - 1,2mm (16GA)

Lenght - 10mm (3/8") , Color - Clear, Thickness - 1,2mm (16GA)

Lenght - 10mm (3/8") , Color - PVD Gold 18k/Clear, Thickness - 1,2mm (16GA)



Hinged Segment Hoop Ring With double Facin...

Reference : 0357

Material: Implant Grade Titanium Stone Material: CZ

Lenght - 8mm (5/16"), Color - Clear, Thickness - 1,2mm (16GA)

Lenght - 8mm (5/16"), Color - PVD Gold 18k/Clear, Thickness - 1,2mm (16GA)



Hinged Segment Hoop Ring With Facing Pave ...

Reference : 0356

Material: Implant Grade Titanium Stone Material: CZ

Lenght - 6mm (1/4"), Color - Clear, Thickness - 1,2mm (16GA)

Lenght - 8mm (5/16"), Color - Clear, Thickness - 1,2mm (16GA)

Lenght - 10mm (3/8") , Color - Clear, Thickness - 1,2mm (16GA)

Lenght - 8mm (5/16"), Color - Clear/Aqua, Thickness - 1,2mm (16GA)

Lenght - 8mm (5/16"), Color - Clear/Purple, Thickness - 1,2mm (16GA)

Lenght - 8mm (5/16"), Color - Clear/pink, Thickness - 1,2mm (16GA)

Lenght - 10mm (3/8") , Color - Clear/Aqua, Thickness - 1,2mm (16GA)



Hinged Segment Hoop With CZ Pave

Reference : 0355

Material: Implant Grade Titanium Stone Material: CZ

Lenght - 6mm (1/4"), Color - Clear, Thickness - 1,2mm (16GA)

Lenght - 8mm (5/16"), Color - Clear, Thickness - 1,2mm (16GA)

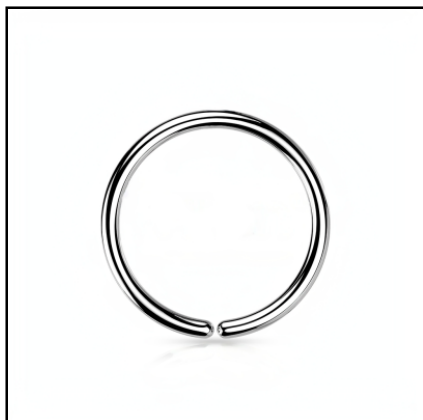
Lenght - 10mm (3/8") , Color - Clear, Thickness - 1,2mm (16GA)

Lenght - 12mm (1/2"), Color - Clear, Thickness - 1,2mm (16GA)

Lenght - 8mm (5/16"), Color - Clear, Thickness - 1mm (18GA)

Lenght - 8mm (5/16"), Color - Clear/pink, Thickness - 1,2mm (16GA)

Lenght - 8mm (5/16"), Color - Clear/AB, Thickness - 1,2mm (16GA)

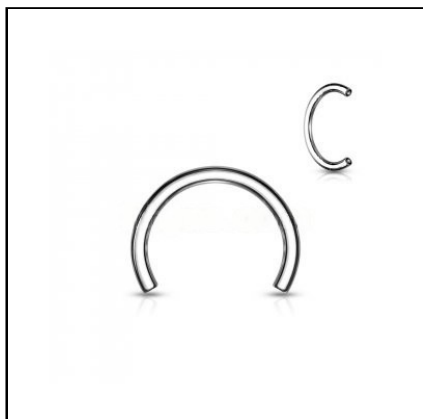


Bendable Hoop

Reference : 0203

Material: Implant Grade Titanium

Lenght - 6mm (1/4"), Color - PVD Gold 18k, Thickness - 0,8mm (20GA)
 Lenght - 6mm (1/4"), Color - PVD Black, Thickness - 0,8mm (20GA)
 Lenght - 7mm (9/32"), Color - PVD Gold 18k, Thickness - 0,8mm (20GA)
 Lenght - 7mm (9/32"), Color - PVD Black, Thickness - 0,8mm (20GA)
 Lenght - 8mm (5/16"), Color - PVD Gold 18k, Thickness - 0,8mm (20GA)
 Lenght - 8mm (5/16"), Color - PVD Black, Thickness - 0,8mm (20GA)
 Lenght - 10mm (3/8") , Color - PVD Gold 18k, Thickness - 0,8mm (20GA)
 Lenght - 10mm (3/8") , Color - PVD Black, Thickness - 0,8mm (20GA)



Horseshoe Circular Barbell Pins

Reference : TA-0026

Material: Implant Grade Titanium 1.2 (16 GA) 1.6 (14GA)

Lenght - 6mm (1/4"), Color - Silver, Thickness - 1,2mm (16GA)
 Lenght - 7mm (9/32"), Color - Silver, Thickness - 1,2mm (16GA)
 Lenght - 8mm (5/16"), Color - Silver, Thickness - 1,2mm (16GA)
 Lenght - 9mm (11/32"), Color - Silver, Thickness - 1,2mm (16GA)
 Lenght - 10mm (3/8") , Color - Silver, Thickness - 1,2mm (16GA)
 Lenght - 12mm (1/2"), Color - Silver, Thickness - 1,2mm (16GA)



Hinged Segment Double Hoop Ring Lined With...

Reference : 0469

Material: Implant Grade Titanium Plating: PVD Stone Material: CZ

Lenght - 8mm (5/16"), Color - Clear, Thickness - 1,2mm (16GA)
 Lenght - 10mm (3/8") , Color - Clear, Thickness - 1,2mm (16GA)
 Lenght - 8mm (5/16"), Color - PVD Gold 18k/Clear, Thickness - 1,2mm (16GA)
 Lenght - 10mm (3/8") , Color - PVD Gold 18k/Clear, Thickness - 1,2mm (16GA)
 Lenght - 8mm (5/16"), Color - PVD Rose Gold/Clear, Thickness - 1,2mm (16GA)
 Lenght - 10mm (3/8") , Color - PVD Rose Gold/Clear, Thickness - 1,2mm (16GA)

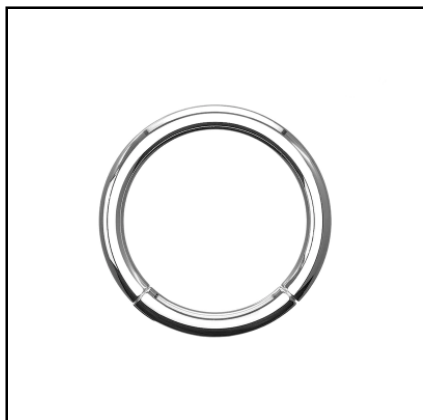


Hinged Segment Hoop Ring With Double Lined...

Reference : 0464

Material: Implant Grade Titanium Plating: PVD Stone Material: CZ

Lenght - 8mm (5/16"), Color - Clear, Thickness - 1,2mm (16GA)
 Lenght - 10mm (3/8") , Color - Clear, Thickness - 1,2mm (16GA)
 Lenght - 8mm (5/16"), Color - PVD Gold 18k/Clear, Thickness - 1,2mm (16GA)
 Lenght - 10mm (3/8") , Color - PVD Gold 18k/Clear, Thickness - 1,2mm (16GA)



Hinged Segment Ring

Reference : 0058

Material: Implant Grade Titanium 0.8 mm (20 GA) 1 mm (18 GA) 1.2 mm (16 GA)

Lenght - 6mm (1/4"), Color - Silver, Thickness - 1,2mm (16GA)

Lenght - 7mm (9/32"), Color - Silver, Thickness - 1,2mm (16GA)

Lenght - 8mm (5/16"), Color - Silver, Thickness - 1,2mm (16GA)

Lenght - 9mm (11/32"), Color - Silver, Thickness - 1,2mm (16GA)

Lenght - 10mm (3/8") , Color - Silver, Thickness - 1,2mm (16GA)

Lenght - 11mm (7/16"), Color - Silver, Thickness - 1,2mm (16GA)



Hinged Segment Hoop Ring With Opal Lined Fr...

Reference : 0361

Material: Implant Grade Titanium Stone Material: Synthetic Opal

Lenght - 8mm (5/16"), Color - White (OP #17), Thickness - 1,2mm (16GA)

Lenght - 8mm (5/16"), Color - Blue (OP #05), Thickness - 1,2mm (16GA)

Lenght - 8mm (5/16"), Color - Rose (OP #22), Thickness - 1,2mm (16GA)

Lenght - 8mm (5/16"), Color - Purple (OP #52), Thickness - 1,2mm (16GA)



Hinged Segment Hoop Ring Lined With Outwa...

Reference : 0360

Material: Implant Grade Titanium Stone Material: Synthetic Opal

Lenght - 8mm (5/16"), Color - White (OP #17), Thickness - 1,2mm (16GA)

Lenght - 8mm (5/16"), Color - Blue (OP #05), Thickness - 1,2mm (16GA)

Lenght - 8mm (5/16"), Color - Rose (OP #22), Thickness - 1,2mm (16GA)

Lenght - 8mm (5/16"), Color - Purple (OP #52), Thickness - 1,2mm (16GA)



Hinged Segment Double Hoop Ring With One ...

Reference : 0696

Material: Implant Grade Titanium Plating: PVD Stone Material: CZ

Lenght - 8mm (5/16"), Color - Clear, Thickness - 1,2mm (16GA)

Lenght - 10mm (3/8") , Color - Clear, Thickness - 1,2mm (16GA)

Lenght - 8mm (5/16"), Color - PVD Gold 18k/Clear, Thickness - 1,2mm (16GA)

Lenght - 10mm (3/8") , Color - PVD Gold 18k/Clear, Thickness - 1,2mm (16GA)



Double Hoop Lined Sparkle Seamless Clicker ...

Reference : 0697

Material: Implant Grade Titanium Plating: PVD Stone Material: CZ

Lenght - 8mm (5/16"), Color - PVD Gold 18k/Clear, Thickness - 1,2mm (16GA)

Lenght - 10mm (3/8"), Color - PVD Gold 18k/Clear, Thickness - 1,2mm (16GA)

Lenght - 8mm (5/16"), Color - Clear, Thickness - 1,2mm (16GA)

Lenght - 10mm (3/8"), Color - Clear, Thickness - 1,2mm (16GA)



Spike Line Dangle

Reference : 1229

Labret not included Material: Implant Grade Titanium Plating: PVD Stone Material: CZ

Color - Clear, Thickness - 1,2mm (16GA)

Color - PVD Gold 18k/Clear, Thickness - 1,2mm (16GA)



Tear Drop

Reference : 1255

Material: Implant Grade Titanium Plating: PVD Stone Material: CZ

Lenght - 8mm (5/16"), Color - Clear, Thickness - 1,2mm (16GA)

Lenght - 8mm (5/16"), Color - PVD Gold 18k/Clear, Thickness - 1,2mm (16GA)



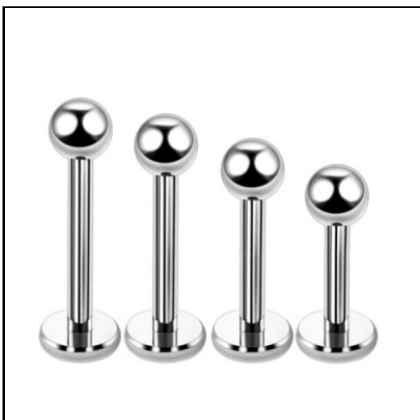
Belly Button Labret

Reference : 1495

Material: Implant Grade Titanium Plating: PVD Stone Material: CZ

Lenght - 8mm (5/16"), Color - Silver, Thickness - 1,6mm (14GA)

Lenght - 10mm (3/8") , Color - Silver, Thickness - 1,6mm (14GA)



Externally Threaded labret

Reference : C011

Material: Implant Grade Titanium

Lenght - 5mm (3/16"), Color - Silver, Thickness - 1,2mm (16GA), ball size - 3mm

Lenght - 6mm (1/4"), Color - Silver, Thickness - 1,2mm (16GA), ball size - 3mm

Lenght - 7mm (9/32"), Color - Silver, Thickness - 1,2mm (16GA), ball size - 3mm

Lenght - 8mm (5/16"), Color - Silver, Thickness - 1,2mm (16GA), ball size - 3mm

Lenght - 10mm (3/8") , Color - Silver, Thickness - 1,2mm (16GA), ball size - 3mm

Lenght - 12mm (1/2"), Color - Silver, Thickness - 1,2mm (16GA), ball size - 3mm

Lenght - 6mm (1/4"), Color - Silver, Thickness - 1,6mm (14GA), ball size - 3mm



CZ With Ball Clusters Surrounding

Reference : 0558

Material: Implant Grade Titanium Stone Material: CZ

Lenght - 8mm (5/16"), Color - PVD Gold 18k/Clear, Thickness - 1,2mm (16GA), ball size - 2.5mm

Lenght - 8mm (5/16"), Color - Clear, Thickness - 1,2mm (16GA), ball size - 3mm



Double Triangle Labret

Reference : 0797

Material: Implant Grade Titanium Plating: PVD Stone Material: CZ

Lenght - 8mm (5/16"), Color - Clear, Thickness - 1,2mm (16GA)

Lenght - 8mm (5/16"), Color - PVD Gold 18k/Clear, Thickness - 1,2mm (16GA)



CZ Balls Labret

Reference : 0780

Material: Implant Grade Titanium Plating: PVD Stone Material: CZ

Lenght - 8mm (5/16"), Color - Clear, Thickness - 1,2mm (16GA)



CZ Balls Labret

Reference : 0768

Material: Implant Grade Titanium Plating: PVD Stone Material: CZ

Lenght - 8mm (5/16"), Color - Clear, Thickness - 1,2mm (16GA)



Tile 5 CZ

Reference : 0596

Material: Implant Grade Titanium Plating: PVD Stone Material: CZ

Lenght - 8mm (5/16"), Color - Clear, Thickness - 1,2mm (16GA)

Lenght - 8mm (5/16"), Color - PVD Gold 18k/Clear, Thickness - 1,2mm (16GA)

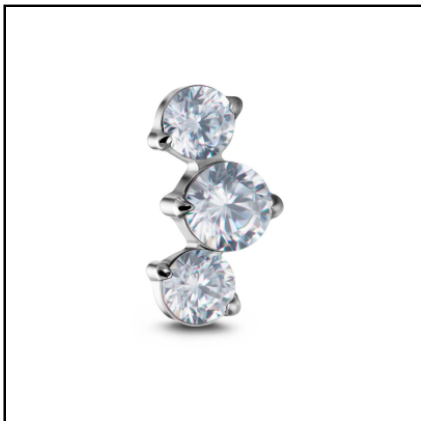


Marquise Triple Labret

Reference : 0592

Material: Implant Grade Titanium Plating: PVD Stone Material: CZ

Lenght - 8mm (5/16"), Color - Clear, Thickness - 1,2mm (16GA)



3 Blaze Top

Reference : 0552

Material: Implant Grade Titanium Plating: PVD Stone Material: CZ

Lenght - 8mm (5/16"), Color - Clear, Thickness - 1,2mm (16GA)

Lenght - 8mm (5/16"), Color - PVD Gold 18k/Clear, Thickness - 1,2mm (16GA)



CZ Paved Moon Shape Top Labret

Reference : 0565

Material: Implant Grade Titanium Stone Material: CZ

Lenght - 8mm (5/16"), Color - Clear, Thickness - 1,2mm (16GA)

Lenght - 8mm (5/16"), Color - PVD Gold 18k/Clear, Thickness - 1,2mm (16GA)



CZ Paved Marquise Top Labret

Reference : 0564

Material: Implant Grade Titanium Stone Material: CZ

Lenght - 8mm (5/16"), Color - Clear, Thickness - 1,2mm (16GA)

Lenght - 8mm (5/16"), Color - PVD Gold 18k/Clear, Thickness - 1,2mm (16GA)



CZ Paved Lightning Top Labret

Reference : 0563

Material: Implant Grade Titanium Stone Material: CZ

Lenght - 8mm (5/16"), Color - Clear, Thickness - 1,2mm (16GA)

Lenght - 8mm (5/16"), Color - PVD Gold 18k/Clear, Thickness - 1,2mm (16GA)



4 Oblong CZ Set Curve Top Labret

Reference : 0544

Material: Implant Grade Titanium Stone Material: CZ

Lenght - 8mm (5/16"), Color - Clear, Thickness - 1,2mm (16GA)

Lenght - 8mm (5/16"), Color - PVD Gold 18k/Clear, Thickness - 1,2mm (16GA)



Labret Triangle CZ Top

Reference : 0189

Labret not included Material: Implant Grade Titanium Plating: PVD Stone Material: CZ

Lenght - 8mm (5/16"), Color - Clear, Thickness - 1,2mm (16GA), ball size - 3mm

Lenght - 8mm (5/16"), Color - PVD Gold 18k/Clear, Thickness - 1,2mm (16GA), ball size - 3mm



Threadless Push Pin 5 CZ Tile Labret

Reference : 0597

Material: Implant Grade Titanium Plating: PVD Stone Material: CZ

Lenght - 8mm (5/16"), Color - Clear, Thickness - 1,2mm (16GA)

Lenght - 8mm (5/16"), Color - PVD Gold 18k/Clear, Thickness - 1,2mm (16GA)



Labret Heart CZ Top

Reference : 0188

Material: Implant Grade Titanium Plating: PVD Stone Material: CZ

Lenght - 8mm (5/16"), Color - Clear, Thickness - 1,2mm (16GA)

Lenght - 8mm (5/16"), Color - PVD Gold 18k/Clear, Thickness - 1,2mm (16GA)



Labret Star CZ Top

Reference : 0187

Material: Implant Grade Titanium Plating: PVD Stone Material: CZ

Lenght - 8mm (5/16"), Color - Clear, Thickness - 1,2mm (16GA)

Lenght - 8mm (5/16"), Color - PVD Gold 18k/Clear, Thickness - 1,2mm (16GA)



Labret Square CZ Top

Reference : 0186

Material: Implant Grade Titanium Plating: PVD Stone Material: CZ

Lenght - 8mm (5/16"), Color - Clear, Thickness - 1,2mm (16GA)

Lenght - 8mm (5/16"), Color - PVD Gold 18k/Clear, Thickness - 1,2mm (16GA)



Snake Labret

Reference : 0584

Material: Implant Grade Titanium Plating: PVD

Lenght - 8mm (5/16"), Color - Silver, Thickness - 1,2mm (16GA)

Lenght - 8mm (5/16"), Color - PVD Gold 18k, Thickness - 1,2mm (16GA)



7 Balls Labret

Reference : 0812

Material: Implant Grade Titanium

Lenght - 8mm (5/16"), Color - Silver, Thickness - 1,2mm (16GA)

Lenght - 8mm (5/16"), Color - PVD Gold 18k/Clear, Thickness - 1,2mm (16GA)



5 Balls

Reference : 0809

Material: Implant Grade Titanium

Lenght - 8mm (5/16"), Color - Silver, Thickness - 1,2mm (16GA)

Lenght - 8mm (5/16"), Color - PVD Gold 18k/Clear, Thickness - 1,2mm (16GA)



3 Balls

Reference : 0808

Material: Implant Grade Titanium

Lenght - 8mm (5/16"), Color - Silver, Thickness - 1,2mm (16GA)

Lenght - 8mm (5/16"), Color - PVD Gold 18k/Clear, Thickness - 1,2mm (16GA)



Descending 4 Balls

Reference : 0807

Material: Implant Grade Titanium

Lenght - 8mm (5/16"), Color - Silver, Thickness - 1,2mm (16GA)

Lenght - 8mm (5/16"), Color - PVD Gold 18k/Clear, Thickness - 1,2mm (16GA)



Ball With Bead Cluster

Reference : 0804

Material: Implant Grade Titanium

Lenght - 8mm (5/16"), Color - Silver, Thickness - 1,2mm (16GA)

Lenght - 8mm (5/16"), Color - PVD Gold 18k/Clear, Thickness - 1,2mm (16GA)



3 Marquise CZ Labret

Reference : 0546

Material: Implant Grade Titanium Stone Material: CZ

Color - Clear, Thickness - 1,2mm (16GA)

Color - Clear/pink, Thickness - 1,2mm (16GA)

Color - Clear/AB, Thickness - 1,2mm (16GA)

Color - Clear/Aqua, Thickness - 1,2mm (16GA)

Color - PVD Gold 18k/Clear, Thickness - 1,2mm (16GA)

Color - Clear/amethyst, Thickness - 1,2mm (16GA)

Color - Clear/Purple, Thickness - 1,2mm (16GA)



Marquise Opal Stone Blaze Set Fan Top Labret

Reference : 0639

Material: Implant Grade Titanium Stone Material: Synthetic Opal

Lenght - 8mm (5/16"), Color - White (OP #17), Thickness - 1,2mm (16GA)

Lenght - 8mm (5/16"), Color - Blue (OP #05), Thickness - 1,2mm (16GA)

Lenght - 8mm (5/16"), Color - Rose (OP #22), Thickness - 1,2mm (16GA)

Lenght - 8mm (5/16"), Color - PVD Gold 18k/White (OP #17), Thickness - 1,2mm (16GA)



Marquise Crystal Blaze Set Fan Top Labret

Reference : 0625

Material: Implant Grade Titanium Stone Material: Crystal

Lenght - 8mm (5/16"), Color - Clear, Thickness - 1,2mm (16GA)

Lenght - 8mm (5/16"), Color - Clear/pink, Thickness - 1,2mm (16GA)

Lenght - 8mm (5/16"), Color - Clear/Purple, Thickness - 1,2mm (16GA)

Lenght - 8mm (5/16"), Color - Clear/Aqua, Thickness - 1,2mm (16GA)

Lenght - 8mm (5/16"), Color - Clear/AB, Thickness - 1,2mm (16GA)

Lenght - 8mm (5/16"), Color - PVD Gold 18k/Clear, Thickness - 1,2mm (16GA)

Lenght - 8mm (5/16"), Color - PVD Gold 18k/Aqua, Thickness - 1,2mm (16GA)



Blaze Set CZ 2mm Stone Paw Shape Top labret

Reference : 0509

Material: Implant Grade Titanium Stone Material: CZ

Lenght - 8mm (5/16"), Color - Clear, Thickness - 1,2mm (16GA), ball size - 2mm

Lenght - 8mm (5/16"), Color - PVD Gold 18k/Clear, Thickness - 1,2mm (16GA), ball size - 2mm



7 Balls Link

Reference : 0474

Material: Implant Grade Titanium

Lenght - 8mm (5/16"), Color - Silver, Thickness - 1,2mm (16GA)

Lenght - 8mm (5/16"), Color - PVD Gold 18k, Thickness - 1,2mm (16GA)



3 Balls Top

Reference : 0386

Material: Implant Grade Titanium

Lenght - 8mm (5/16"), Color - Silver, Thickness - 1,2mm (16GA)

Lenght - 8mm (5/16"), Color - PVD Gold 18k/Clear, Thickness - 1,2mm (16GA)



3 Opal Blaze Set Trinity

Reference : 0294

Material: Implant Grade Titanium Stone Material: Synthetic Opal

Lenght - 8mm (5/16"), Color - White (OP #17), Thickness - 1,2mm (16GA)

Lenght - 8mm (5/16"), Color - Blue (OP #05), Thickness - 1,2mm (16GA)



3 CZ Blaze Set Trinity

Reference : 0292

Material: Implant Grade Titanium Stone Material: CZ

Lenght - 8mm (5/16"), Color - Clear, Thickness - 1,2mm (16GA), ball size - 5mm

Lenght - 8mm (5/16"), Color - Clear/pink, Thickness - 1,2mm (16GA), ball size - 5mm

Lenght - 8mm (5/16"), Color - Clear/Purple, Thickness - 1,2mm (16GA), ball size - 5mm

Lenght - 8mm (5/16"), Color - Clear/Aqua, Thickness - 1,2mm (16GA), ball size - 5mm

Lenght - 8mm (5/16"), Color - Clear/AB, Thickness - 1,2mm (16GA), ball size - 5mm

Lenght - 8mm (5/16"), Color - PVD Gold 18k/Clear, Thickness - 1,2mm (16GA), ball size - 5mm



Bezel Set CZ Stone Flower Labret

Reference : 0226

Material: Implant Grade Titanium Stone Material: CZ

Lenght - 8mm (5/16"), Color - Clear, Thickness - 1,2mm (16GA)

Lenght - 8mm (5/16"), Color - Clear/pink, Thickness - 1,2mm (16GA)

Lenght - 8mm (5/16"), Color - Clear/Purple, Thickness - 1,2mm (16GA)

Lenght - 8mm (5/16"), Color - Clear/Aqua, Thickness - 1,2mm (16GA)

Lenght - 8mm (5/16"), Color - Clear/AB, Thickness - 1,2mm (16GA)

Lenght - 8mm (5/16"), Color - Clear/VM, Thickness - 1,2mm (16GA)

Lenght - 8mm (5/16"), Color - PVD Gold 18k/Clear, Thickness - 1,2mm (16GA)



Bezel Set CZ With balls Top

Reference : 0123

Material: Implant Grade Titanium Stone Material: CZ

Lenght - 8mm (5/16"), Color - Clear, Thickness - 1,2mm (16GA)



Barbells With Set CZ Cluster Top

Reference : 0113

Material: Implant Grade Titanium Plating: PVD Stone Material: CZ

Lenght - 6mm (1/4"), Color - Clear, Thickness - 1,2mm (16GA)

Lenght - 8mm (5/16"), Color - Clear, Thickness - 1,2mm (16GA)



3-Bezel Set Opal Top

Reference : 0112

Material: Implant Grade Titanium Stone Material: Synthetic Opal

Lenght - 8mm (5/16"), Color - White (OP #17), Thickness - 1,2mm (16GA)

Lenght - 8mm (5/16"), Color - Blue (OP #05), Thickness - 1,2mm (16GA)



3-Bezel Set CZ Top

Reference : 0111

Material: Implant Grade Titanium Stone Material: CZ

Lenght - 8mm (5/16"), Color - Clear, Thickness - 1,2mm (16GA)

Lenght - 8mm (5/16"), Color - Clear/pink, Thickness - 1,2mm (16GA)

Lenght - 8mm (5/16"), Color - Clear/Aqua, Thickness - 1,2mm (16GA)

Lenght - 8mm (5/16"), Color - PVD Gold 18k/Clear, Thickness - 1,2mm (16GA)



Ball Top Labret 4mm base

Reference : 0041

Material: Implant Grade Titanium 1.2 (16 GA)

Lenght - 6mm (1/4"), Color - Silver, Thickness - 1,2mm (16GA), ball size - 3mm

Lenght - 8mm (5/16"), Color - Silver, Thickness - 1,2mm (16GA), ball size - 3mm

Lenght - 10mm (3/8") , Color - Silver, Thickness - 1,2mm (16GA), ball size - 3mm

Lenght - 12mm (1/2"), Color - Silver, Thickness - 1,2mm (16GA), ball size - 3mm

Lenght - 6mm (1/4"), Color - PVD Gold 18k, Thickness - 1,2mm (16GA), ball size - 3mm

Lenght - 8mm (5/16"), Color - PVD Gold 18k, Thickness - 1,2mm (16GA), ball size - 3mm

Lenght - 10mm (3/8") , Color - PVD Gold 18k, Thickness - 1,2mm (16GA), ball size - 3mm

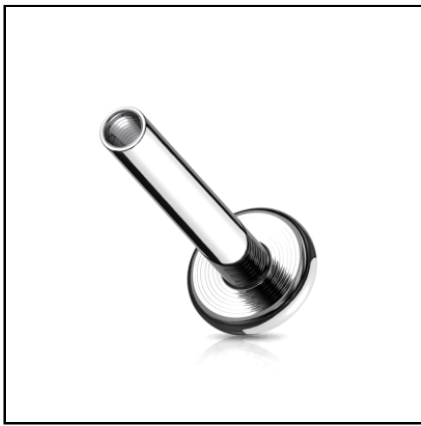


4mm Base Labret

Reference : 0185

Material: Implant Grade Titanium Plating: PVD Stone Material: CZ

Lenght - 6mm (1/4"), Color - Clear, Thickness - 1,2mm (16GA), ball size - 2mm
Lenght - 6mm (1/4"), Color - Clear, Thickness - 1,2mm (16GA), ball size - 2.5mm
Lenght - 6mm (1/4"), Color - Clear, Thickness - 1,2mm (16GA), ball size - 3mm
Lenght - 8mm (5/16"), Color - Clear, Thickness - 1,2mm (16GA), ball size - 2mm
Lenght - 8mm (5/16"), Color - Clear, Thickness - 1,2mm (16GA), ball size - 2.5mm
Lenght - 8mm (5/16"), Color - Clear, Thickness - 1,2mm (16GA), ball size - 3mm
Lenght - 6mm (1/4"), Color - PVD Gold 18k/Clear, Thickness - 1,2mm (16GA), ball size - 2mm



3mm Base Labret

Reference : TA-0029

Material: Implant Grade Titanium 1mm (18 GA) 1.2 (16 GA) Please note this item is Internally Threaded. Not compatible with the threadless jewelry parts

Lenght - 6mm (1/4"), Color - PVD Gold 18k, Thickness - 1,2mm (16GA)
Lenght - 8mm (5/16"), Color - PVD Gold 18k, Thickness - 1,2mm (16GA)
Lenght - 10mm (3/8") , Color - PVD Gold 18k, Thickness - 1,2mm (16GA)
Lenght - 12mm (1/2"), Color - PVD Gold 18k, Thickness - 1,2mm (16GA)
Lenght - 6mm (1/4"), Color - PVD Black, Thickness - 1,2mm (16GA)
Lenght - 8mm (5/16"), Color - PVD Black, Thickness - 1,2mm (16GA)

Belly Button



Belly Button Labret

Reference : 1495

Material: Implant Grade Titanium Plating: PVD Stone Material: CZ

Lenght - 8mm (5/16") , Color - Silver, Thickness - 1,6mm (14GA)

Lenght - 10mm (3/8") , Color - Silver, Thickness - 1,6mm (14GA)

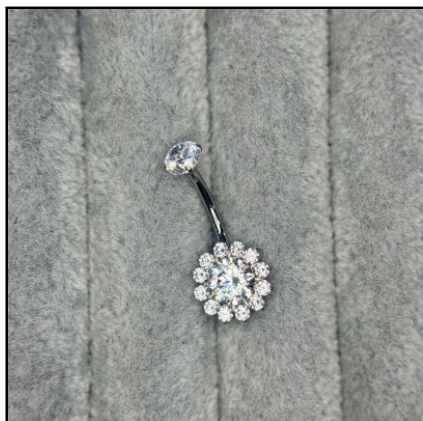


Belly chain

Reference : 1562

Material: Implant Grade Titanium Plating: PVD Stone Material: CZ

Lenght - 10mm (3/8") , Color - Clear, Thickness - 1,6mm (14GA)



Flower Belly Button Ring

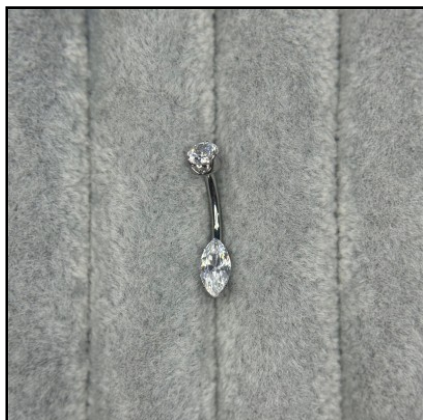
Reference : 1559

Material: Implant Grade Titanium Plating: PVD Stone Material: CZ

Lenght - 10mm (3/8") , Color - Clear, Thickness - 1,6mm (14GA)

Lenght - 10mm (3/8") , Color - Clear/pink, Thickness - 1,6mm (14GA)

Lenght - 10mm (3/8") , Color - Clear/Purple, Thickness - 1,6mm (14GA)



Marquise CZ

Reference : 1423

Material: Implant Grade Titanium Stone Material: CZ

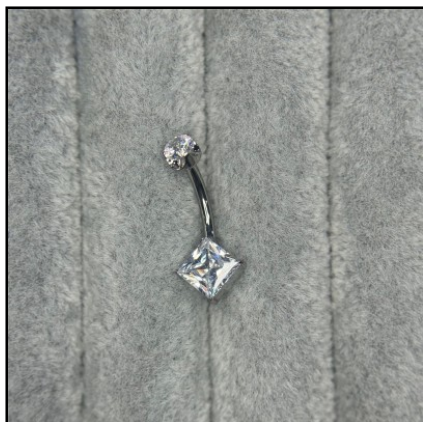
Lenght - 10mm (3/8") , Color - Clear, Thickness - 1,6mm (14GA)

Lenght - 10mm (3/8") , Color - Clear/Aqua, Thickness - 1,6mm (14GA)

Lenght - 10mm (3/8") , Color - Clear/AB, Thickness - 1,6mm (14GA)

Lenght - 10mm (3/8") , Color - PVD Gold 18k/Clear, Thickness - 1,6mm (14GA)

Belly Button



Square CZ

Reference : 1421

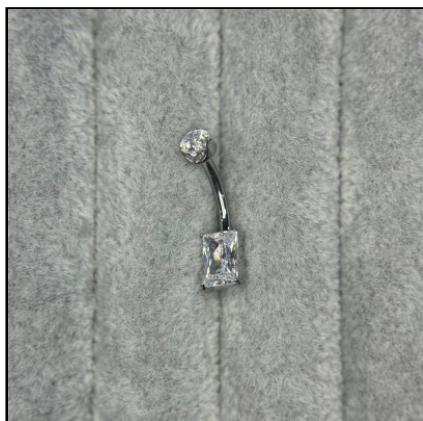
Material: Implant Grade Titanium Stone Material: CZ

Lenght - 10mm (3/8") , Color - Clear, Thickness - 1,6mm (14GA)

Lenght - 10mm (3/8") , Color - Clear/pink, Thickness - 1,6mm (14GA)

Lenght - 10mm (3/8") , Color - Clear/Aqua, Thickness - 1,6mm (14GA)

Lenght - 10mm (3/8") , Color - Clear/amethyst, Thickness - 1,6mm (14GA)



Rectangle CZ

Reference : 1420

Material: Implant Grade Titanium Stone Material: CZ

Lenght - 10mm (3/8") , Color - Clear, Thickness - 1,6mm (14GA)

Lenght - 10mm (3/8") , Color - Clear/AB, Thickness - 1,6mm (14GA)

Lenght - 10mm (3/8") , Color - Clear/pink, Thickness - 1,6mm (14GA)

Lenght - 10mm (3/8") , Color - PVD Gold 18k/Clear, Thickness - 1,6mm (14GA)



Triangle Cut

Reference : 1419

Material: Implant Grade Titanium Stone Material: CZ

Lenght - 10mm (3/8") , Color - Clear, Thickness - 1,6mm (14GA)

Lenght - 10mm (3/8") , Color - Clear/pink, Thickness - 1,6mm (14GA)

Lenght - 10mm (3/8") , Color - Clear/Aqua, Thickness - 1,6mm (14GA)

Lenght - 10mm (3/8") , Color - PVD Gold 18k/Clear, Thickness - 1,6mm (14GA)



Externally Threaded CZ Belly Button

Reference : C100

Material: Implant Grade Titanium

Lenght - 10mm (3/8") , Color - Clear, Thickness - 1,6mm (14GA), ball size - 5 & 8 mm

Lenght - 12mm (1/2") , Color - Clear, Thickness - 1,6mm (14GA), ball size - 5 & 8 mm

Belly Button



Externally Threaded Belly Button

Reference : C0B5

Material: Implant Grade Titanium

Lenght - 10mm (3/8") , Color - Silver, Thickness - 1,6mm (14GA), ball size - 4 & 6 mm

Lenght - 12mm (1/2") , Color - Silver, Thickness - 1,6mm (14GA), ball size - 4 & 6 mm

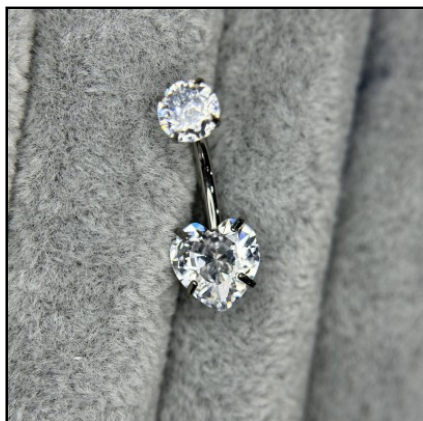


Belly Button Navel Ring

Reference : 1260

Material: Implant Grade Titanium

Lenght - 10mm (3/8") , Color - Silver, Thickness - 1,6mm (14GA)

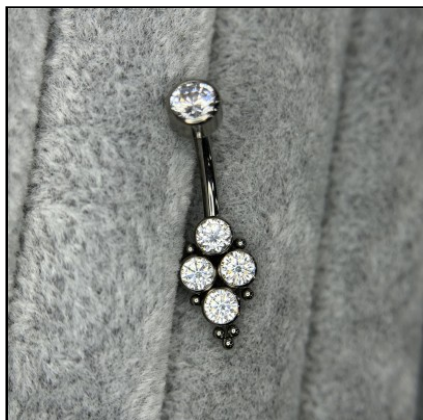


Belly Button CZ Heart

Reference : 0486

Material: Implant Grade Titanium Plating: PVD Stone Material: CZ

Lenght - 10mm (3/8") , Color - Clear, Thickness - 1,6mm (14GA)



Belly Button 4 cz

Reference : 1237

Material: Implant Grade Titanium Plating: PVD Stone Material: CZ

Lenght - 10mm (3/8") , Color - Clear, Thickness - 1,6mm (14GA)



Belly Button Ring CZ

Reference : 1266

Material: Implant Grade Titanium Stone Material: CZ

Lenght - 10mm (3/8") , Color - Clear, Thickness - 1,6mm (14GA)

Lenght - 10mm (3/8") , Color - Clear/pink, Thickness - 1,6mm (14GA)

Lenght - 10mm (3/8") , Color - Clear/Aqua, Thickness - 1,6mm (14GA)

Lenght - 12mm (1/2") , Color - Clear, Thickness - 1,6mm (14GA)

Lenght - 12mm (1/2") , Color - PVD Gold 18k/Clear, Thickness - 1,6mm (14GA)

Lenght - 10mm (3/8") , Color - PVD Gold 18k/Clear, Thickness - 1,6mm (14GA)



Belly Button Ring

Reference : 0995

Material: Implant Grade Titanium Plating: PVD

Lenght - 10mm (3/8") , Color - Clear, Thickness - 1,6mm (14GA)

Lenght - 10mm (3/8") , Color - PVD Gold 18k/Clear, Thickness - 1,6mm (14GA)

Lenght - 12mm (1/2") , Color - Silver, Thickness - 1,6mm (14GA)

Lenght - 12mm (1/2") , Color - PVD Gold 18k, Thickness - 1,6mm (14GA)



Belly Button Opal CZ

Reference : 0862

Material: Implant Grade Titanium Plating: PVD Stone Material: CZ

Lenght - 10mm (3/8") , Color - OP17+Clear, Thickness - 1,6mm (14GA)



Belly Button CZ Balls

Reference : 0643

Material: Implant Grade Titanium Plating: PVD Stone Material: CZ

Lenght - 10mm (3/8") , Color - Clear, Thickness - 1,6mm (14GA)

Belly Button



Curved Belly Buttton

Reference : 0107

Material: Implant Grade Titanium Plating: PVD Stone Material: CZ

Lenght - 10mm (3/8") , Color - Clear, Thickness - 1,6mm (14GA)



CZ Belly Button Rings

Reference : 0855

Material: Implant Grade Titanium Plating: PVD Stone Material: CZ

Lenght - 10mm (3/8") , Color - Clear, Thickness - 1,6mm (14GA)

Lenght - 10mm (3/8") , Color - PVD Black/Clear, Thickness - 1,6mm (14GA)

Lenght - 10mm (3/8") , Color - Clear/AB, Thickness - 1,6mm (14GA)

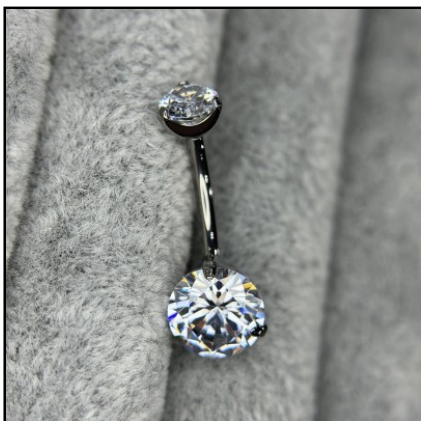
Lenght - 10mm (3/8") , Color - Clear/pink, Thickness - 1,6mm (14GA)

Lenght - 10mm (3/8") , Color - Clear/Aqua, Thickness - 1,6mm (14GA)

Lenght - 10mm (3/8") , Color - PVD Gold 18k/Clear, Thickness - 1,6mm (14GA)

Lenght - 10mm (3/8") , Color - Clear/Black, Thickness - 1,6mm (14GA)

Lenght - 10mm (3/8") , Color - PVD Black/Black, Thickness - 1,6mm (14GA)



Set Double CZ Gem Belly Button

Reference : 0056

Material: Implant Grade Titanium Stone Material: CZ

Lenght - 10mm (3/8") , Color - Clear, Thickness - 1,6mm (14GA)

Lenght - 10mm (3/8") , Color - Clear/AB, Thickness - 1,6mm (14GA)

Lenght - 10mm (3/8") , Color - Clear/Purple, Thickness - 1,6mm (14GA)

Lenght - 10mm (3/8") , Color - Clear/VM, Thickness - 1,6mm (14GA)



Belly Button

Reference : 0046

Material: Implant Grade Titanium Plating: PVD Stone Material: CZ

Lenght - 10mm (3/8") , Color - Clear, Thickness - 1,6mm (14GA), ball size - 5 & 8 mm

Lenght - 10mm (3/8") , Color - PVD Gold 18k/Clear, Thickness - 1,6mm (14GA), ball size - 5 &

Lenght - 10mm (3/8") , Color - PVD Black/Clear, Thickness - 1,6mm (14GA), ball size - 5 & 8

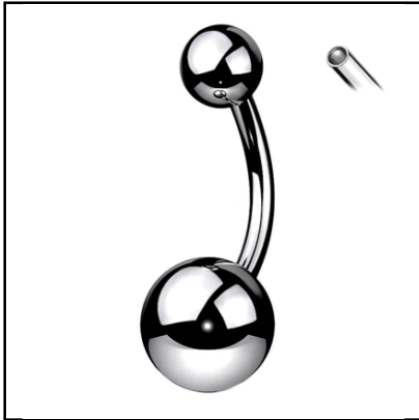
Lenght - 10mm (3/8") , Color - Clear, Thickness - 1,6mm (14GA), ball size - 4 & 6 mm

Lenght - 8mm (5/16") , Color - Clear, Thickness - 1,6mm (14GA), ball size - 4 & 6 mm

Lenght - 12mm (1/2") , Color - Clear, Thickness - 1,6mm (14GA), ball size - 5 & 8 mm

Lenght - 12mm (1/2") , Color - PVD Gold 18k/Clear, Thickness - 1,6mm (14GA), ball size - 5 &

Belly Button



Belly Button Ring

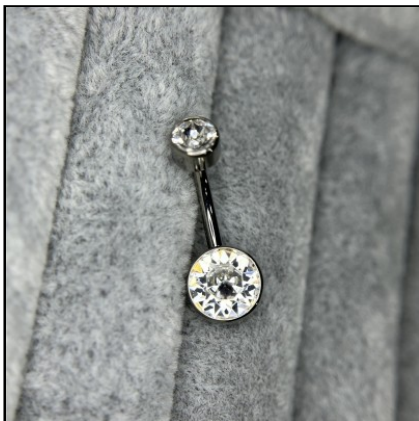
Reference : 0534

Material: Implant Grade Titanium

Lenght - 10mm (3/8") , Color - Silver, Thickness - 1,6mm (14GA), ball size - 5 & 8 mm

Lenght - 12mm (1/2") , Color - Silver, Thickness - 1,6mm (14GA), ball size - 5 & 8 mm

Lenght - 10mm (3/8") , Color - Silver, Thickness - 1,6mm (14GA), ball size - 4 & 6 mm



Bezel Set Round CZ

Reference : 0136

Material: Implant Grade Titanium Plating: PVD Stone Material: CZ

Lenght - 10mm (3/8") , Color - Clear, Thickness - 1,6mm (14GA), ball size - 4 & 6 mm

Lenght - 10mm (3/8") , Color - Clear/pink, Thickness - 1,6mm (14GA), ball size - 4 & 6 mm

Lenght - 10mm (3/8") , Color - Clear/Aqua, Thickness - 1,6mm (14GA), ball size - 4 & 6 mm

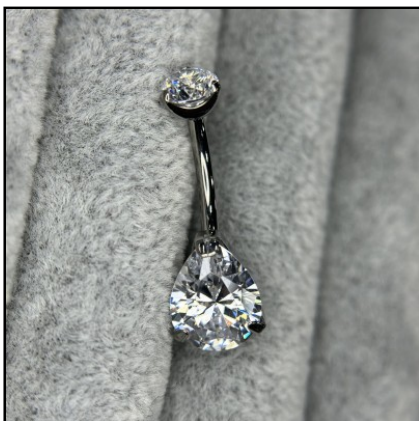
Lenght - 10mm (3/8") , Color - Clear, Thickness - 1,6mm (14GA), ball size - 5 & 8 mm

Lenght - 10mm (3/8") , Color - Clear/pink, Thickness - 1,6mm (14GA), ball size - 5 & 8 mm

Lenght - 10mm (3/8") , Color - Clear/Aqua, Thickness - 1,6mm (14GA), ball size - 5 & 8 mm

Lenght - 10mm (3/8") , Color - PVD Gold 18k/Clear, Thickness - 1,6mm (14GA), ball size - 4 & 6 mm

Lenght - 10mm (3/8") , Color - PVD Gold 18k/Clear, Thickness - 1,6mm (14GA), ball size - 5 & 8 mm



Round Top CZ With Prong Set Pear CZ

Reference : 0381

Material: Implant Grade Titanium Stone Material: CZ

Lenght - 10mm (3/8") , Color - Clear, Thickness - 1,6mm (14GA)

Lenght - 10mm (3/8") , Color - Clear/pink, Thickness - 1,6mm (14GA)

Lenght - 10mm (3/8") , Color - Clear/AB, Thickness - 1,6mm (14GA)

Lenght - 10mm (3/8") , Color - Clear/VM, Thickness - 1,6mm (14GA)



Round Top Opal With Prong Set Pear Opal

Reference : 0382

Material: Implant Grade Titanium Stone Material: Synthetic Opal

Lenght - 10mm (3/8") , Color - White (OP #17), Thickness - 1,6mm (14GA)

Lenght - 10mm (3/8") , Color - Blue (OP #05), Thickness - 1,6mm (14GA)

Lenght - 10mm (3/8") , Color - Rose (OP #22), Thickness - 1,6mm (14GA)

Lenght - 10mm (3/8") , Color - Purple (OP #52), Thickness - 1,6mm (14GA)

Belly Button



Round Bezel Set CZ Cluster Belly Button Ring

Reference : 0105

Material: Implant Grade Titanium Stone Material: CZ

Lenght - 10mm (3/8") , Color - Clear, Thickness - 1,6mm (14GA)

Lenght - 10mm (3/8") , Color - Clear/pink, Thickness - 1,6mm (14GA)

Lenght - 10mm (3/8") , Color - Clear/Aqua, Thickness - 1,6mm (14GA)



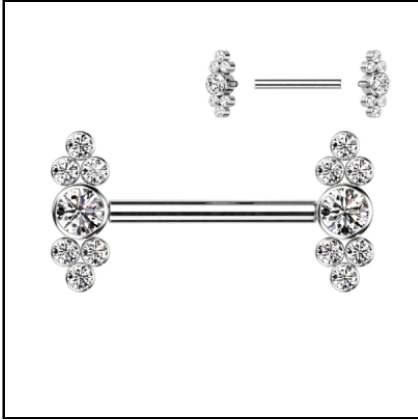
Opal Belly Button Ring

Reference : 0106

Material: Implant Grade Titanium Size: 1.6mm (14 GA), 10mm (3/8") Width: 9mm (0.4 inch)

Lenght - 10mm (3/8") , Color - Blue (OP #05), Thickness - 1,6mm (14GA)

Lenght - 10mm (3/8") , Color - White (OP #17), Thickness - 1,6mm (14GA)

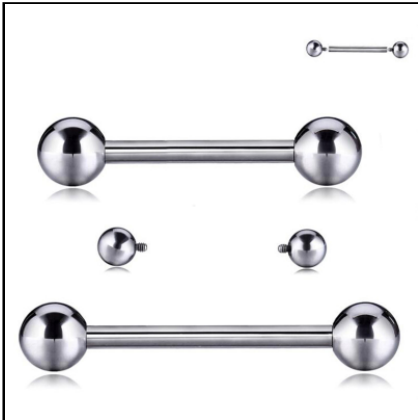


Barbells with CZ Bezel Set

Reference : 0721

Material: Implant Grade Titanium Stone Material: CZ

Lenght - 14mm (9/16"), Color - Clear, Thickness - 1,6mm (14GA)



Internal Thread Barbell With Balls

Reference : 0039

Material: Implant Grade Titanium

Lenght - 8mm (5/16"), Color - Silver, Thickness - 1,2mm (16GA), ball size - 3mm

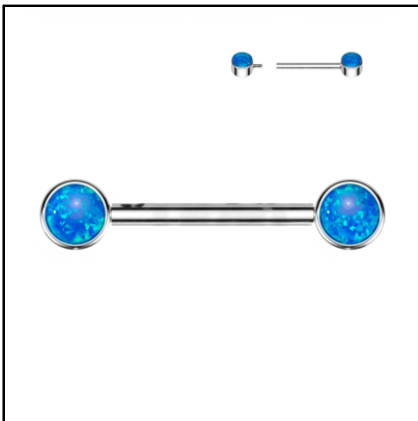
Lenght - 10mm (3/8") , Color - Silver, Thickness - 1,2mm (16GA), ball size - 3mm

Lenght - 12mm (1/2") , Color - Silver, Thickness - 1,2mm (16GA), ball size - 3mm

Lenght - 14mm (9/16") , Color - Silver, Thickness - 1,2mm (16GA), ball size - 4mm

Lenght - 12mm (1/2") , Color - Silver, Thickness - 1,6mm (14GA), ball size - 4mm

Lenght - 14mm (9/16") , Color - Silver, Thickness - 1,6mm (14GA), ball size - 4mm



Nipple Barbell With Opal Bezel Set

Reference : 0130

Material: Implant Grade Titanium Stone Material: Synthetic Opal

Lenght - 12mm (1/2") , Color - White (OP #17), Thickness - 1,6mm (14GA), ball size - 5mm

Lenght - 12mm (1/2") , Color - Blue (OP #05), Thickness - 1,6mm (14GA), ball size - 5mm



Nipple Barbell With Bezel Set CZ Ends

Reference : 0129

Material: Implant Grade Titanium Stone Material: CZ

Lenght - 12mm (1/2") , Color - Clear, Thickness - 1,6mm (14GA), ball size - 5mm

Lenght - 14mm (9/16") , Color - Clear, Thickness - 1,6mm (14GA), ball size - 5mm

Lenght - 12mm (1/2") , Color - Clear/AB, Thickness - 1,6mm (14GA), ball size - 5mm

Lenght - 12mm (1/2") , Color - Clear/Aqua, Thickness - 1,6mm (14GA), ball size - 5mm

Lenght - 12mm (1/2") , Color - Clear/Purple, Thickness - 1,6mm (14GA), ball size - 5mm

Lenght - 12mm (1/2") , Color - Clear/VM, Thickness - 1,6mm (14GA), ball size - 5mm

Lenght - 12mm (1/2") , Color - Clear/pink, Thickness - 1,6mm (14GA), ball size - 5mm



Nipple Barbell With Set CZ and Balls

Reference : 0085

Material: Implant Grade Titanium Plating: PVD Stone Material: CZ

Lenght - 14mm (9/16"), Color - Clear, Thickness - 1,6mm (14GA)



Nipple Barbell Opal

Reference : 0082

Material: Implant Grade Titanium Stone Material: Synthetic Opal

Lenght - 14mm (9/16"), Color - White (OP #17), Thickness - 1,6mm (14GA)

Lenght - 14mm (9/16"), Color - Blue (OP #05), Thickness - 1,6mm (14GA)



Nipple Barbell With 5 Bezel Set CZ

Reference : 0081

Material: Implant Grade Titanium Stone Material: CZ

Lenght - 14mm (9/16"), Color - Clear, Thickness - 1,6mm (14GA)



Curved Barbell

Reference : 0037

Material: Implant Grade Titanium 1.2 (16 GA) 1.6 (14GA)

Lenght - 6mm (1/4"), Color - Silver, Thickness - 1,2mm (16GA), ball size - 3mm

Lenght - 8mm (5/16"), Color - Silver, Thickness - 1,2mm (16GA), ball size - 3mm

Lenght - 10mm (3/8") , Color - Silver, Thickness - 1,2mm (16GA), ball size - 3mm

Lenght - 12mm (1/2") , Color - Silver, Thickness - 1,2mm (16GA), ball size - 3mm

Lenght - 10mm (3/8") , Color - Silver, Thickness - 1,6mm (14GA), ball size - 5mm

Lenght - 12mm (1/2") , Color - Silver, Thickness - 1,6mm (14GA), ball size - 5mm



Dragonfly

Reference : C0123

Color - Clear, Thickness - 1,2mm (16GA)



Round Rec Mix

Reference : 1626

Color - Clear, Thickness - 1,2mm (16GA)

Color - PVD Gold 18k/Clear, Thickness - 1,2mm (16GA)



Chain Hangs Curved Bar

Reference : 1204

Labret not included Material: Implant Grade Titanium Plating: PVD Stone Material: CZ

Color - Clear, Thickness - 1,2mm (16GA)

Color - PVD Gold 18k/Clear, Thickness - 1,2mm (16GA)



Dangle Chain

Reference : 1106

Material: Implant Grade Titanium Plating: PVD Stone Material: CZ

Color - Clear, Thickness - 1,2mm (16GA)

Color - PVD Gold 18k/Clear, Thickness - 1,2mm (16GA)



Half Supernova

Reference : 1431

Material: Implant Grade Titanium Plating: PVD Stone Material: CZ

Color - Clear, Thickness - 1,2mm (16GA)

Color - Clear/amethyst, Thickness - 1,2mm (16GA)



Domino

Reference : 1343

Material: Implant Grade Titanium Plating: PVD Stone Material: CZ

Color - Clear, Thickness - 1,2mm (16GA)

Color - PVD Gold 18k/Clear, Thickness - 1,2mm (16GA)



Bezel Set Rectangles and alternate top

Reference : 0904

Material: Implant Grade Titanium Plating: PVD Stone Material: CZ

Color - Clear, Thickness - 1,2mm (16GA)

Color - PVD Gold 18k/Clear, Thickness - 1,2mm (16GA)



Sea Horse

Reference : 1510

Material: Implant Grade Titanium Plating: PVD Stone Material: CZ

Color - Clear, Thickness - 1,2mm (16GA)

Color - PVD Gold 18k/Clear, Thickness - 1,2mm (16GA)



Butterfly

Reference : 1553

Labret not included Material: Implant Grade Titanium Plating: PVD Stone Material: CZ

Color - Silver, Thickness - 1,2mm (16GA)

Color - PVD Gold 18k, Thickness - 1,2mm (16GA)



Chain Hangs Curved Bar

Reference : 1203

Labret not included Material: Implant Grade Titanium Plating: PVD Stone Material: CZ

Color - Clear, Thickness - 1,2mm (16GA)



Bezel Set CZ Flower

Reference : 1574

Labret not included Material: Implant Grade Titanium Plating: PVD Stone Material: CZ

Color - Clear, Thickness - 1,2mm (16GA)

Color - Clear/AB, Thickness - 1,2mm (16GA)



Marquise Crown

Reference : 1617

Labret not included Material: Implant Grade Titanium Plating: PVD Stone Material: CZ

Color - Clear, Thickness - 1,2mm (16GA)

Color - PVD Gold 18k/Clear, Thickness - 1,2mm (16GA)



Marquise Z Crown

Reference : 1616

Labret not included Material: Implant Grade Titanium Plating: PVD Stone Material: CZ

Color - Clear, Thickness - 1,2mm (16GA)



Set Cat Claw

Reference : 1614

Labret not included Material: Implant Grade Titanium Plating: PVD Stone Material: CZ

Color - Clear, Thickness - 1,2mm (16GA)

Color - PVD Gold 18k/Clear, Thickness - 1,2mm (16GA)



Floral Marquise

Reference : 1615

Labret not included Material: Implant Grade Titanium Plating: PVD Stone Material: CZ

Color - PVD Gold 18k/Clear, Thickness - 1,2mm (16GA)

Color - Clear/pink, Thickness - 1,2mm (16GA)

Color - Clear, Thickness - 1,2mm (16GA)



Natural Stone 3 Marquise

Reference : 1234

Labret not included Material: Implant Grade Titanium Stone Material: CZ

Color - White Shell, Thickness - 1,2mm (16GA)

Color - Amethyst, Thickness - 1,2mm (16GA)

Color - Turquoise, Thickness - 1,2mm (16GA)



Natural Stone 4 Marquise

Reference : 1232

Labret not included Material: Implant Grade Titanium Stone Material: CZ

Color - Turquoise, Thickness - 1,2mm (16GA)

Color - White Shell, Thickness - 1,2mm (16GA)

Color - Amethyst, Thickness - 1,2mm (16GA)



Mix Bumped

Reference : 1461

Labret not included Material: Implant Grade Titanium Stone Material: CZ

Color - Silver, Thickness - 1,2mm (16GA)



Bumped

Reference : 1460

Labret not included Material: Implant Grade Titanium Stone Material: CZ

Color - Silver, Thickness - 1,2mm (16GA)

Color - PVD Gold 18k, Thickness - 1,2mm (16GA)



Pear Marquise

Reference : 1452

Labret not included Material: Implant Grade Titanium Stone Material: CZ

Color - Clear, Thickness - 1,2mm (16GA)

Color - Clear/pink, Thickness - 1,2mm (16GA)



Triangle & Round CZ

Reference : 1450

Material: Implant Grade Titanium Stone Material: CZ

Color - Clear, Thickness - 1,2mm (16GA)

Color - Clear/pink, Thickness - 1,2mm (16GA)

Color - Clear/Aqua, Thickness - 1,2mm (16GA)

Color - Clear/amethyst, Thickness - 1,2mm (16GA)

Color - PVD Gold 18k/Clear, Thickness - 1,2mm (16GA)



Dart

Reference : 1448

Labret not included Material: Implant Grade Titanium Stone Material: CZ

Color - Clear, Thickness - 1,2mm (16GA)

Color - PVD Gold 18k/Clear, Thickness - 1,2mm (16GA)

Color - Clear/pink, Thickness - 1,2mm (16GA)

Color - Clear/amethyst, Thickness - 1,2mm (16GA)



9 CZ

Reference : 1444

Labret not included Material: Implant Grade Titanium Stone Material: CZ

Color - Clear, Thickness - 1,2mm (16GA)

Color - PVD Gold 18k/Clear, Thickness - 1,2mm (16GA)



3 CZ Triangle

Reference : 1441

Labret not included Material: Implant Grade Titanium Stone Material: CZ

Color - Clear, Thickness - 1,2mm (16GA)

Color - PVD Gold 18k/Clear, Thickness - 1,2mm (16GA)



Arrow Chain

Reference : 1440

Labret not included Material: Implant Grade Titanium Stone Material: CZ

Color - Silver, Thickness - 1,2mm (16GA)

Color - PVD Gold 18k, Thickness - 1,2mm (16GA)



Branch

Reference : 1436

Labret not included Material: Implant Grade Titanium Stone Material: CZ

Color - Silver, Thickness - 1,2mm (16GA)

Color - PVD Gold 18k, Thickness - 1,2mm (16GA)



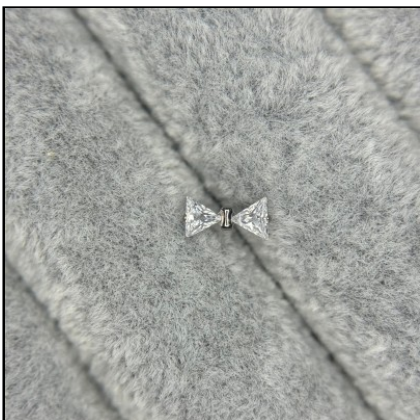
Heart

Reference : 1526

Labret not included Material: Implant Grade Titanium Stone Material: CZ

Color - Clear, Thickness - 1,2mm (16GA)

Color - PVD Gold 18k/Clear, Thickness - 1,2mm (16GA)



Double Triangle

Reference : 1525

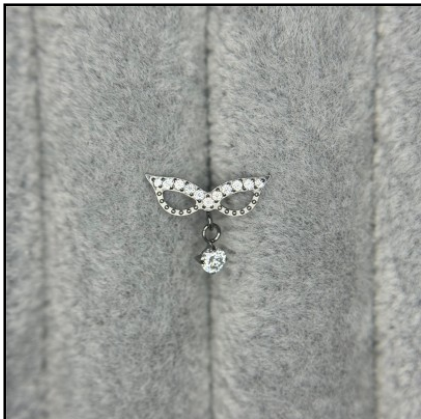
Labret not included Material: Implant Grade Titanium Stone Material: CZ

Color - PVD Gold 18k/Clear, Thickness - 1,2mm (16GA)

Color - Clear/Purple, Thickness - 1,2mm (16GA)

Color - Clear, Thickness - 1,2mm (16GA)

Color - Clear/pink, Thickness - 1,2mm (16GA)



Mask

Reference : 1523

Labret not included Material: Implant Grade Titanium Stone Material: CZ

Color - Clear, Thickness - 1,2mm (16GA)

Color - PVD Gold 18k/Clear, Thickness - 1,2mm (16GA)



Butterfly CZ

Reference : 1554

Labret not included Material: Implant Grade Titanium Stone Material: CZ

Color - Clear, Thickness - 1,2mm (16GA)

Color - Clear/pink, Thickness - 1,2mm (16GA)

Color - PVD Gold 18k/Clear, Thickness - 1,2mm (16GA)



3 Set

Reference : 1457

Labret not included Material: Implant Grade Titanium Stone Material: CZ

Color - Clear, Thickness - 1,2mm (16GA)



Square & Round CZ

Reference : 1572

Labret not included Material: Implant Grade Titanium Stone Material: CZ

Color - Clear, Thickness - 1,2mm (16GA)

Color - PVD Gold 18k/Clear, Thickness - 1,2mm (16GA)



Triangle & Round Top

Reference : 1571

Labret not included Material: Implant Grade Titanium Stone Material: CZ

Color - Clear, Thickness - 1,2mm (16GA)

Color - PVD Gold 18k/Clear, Thickness - 1,2mm (16GA)

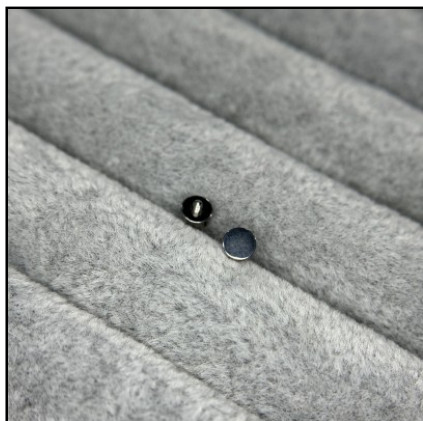


Bow TOP

Reference : 1570

Labret not included Material: Implant Grade Titanium Stone Material: CZ

Color - Clear, Thickness - 1,2mm (16GA)



Disk

Reference : TA-0018

Labret not included Material: Implant Grade Titanium

Color - Silver, Thickness - 1,2mm (16GA), ball size - 3mm

Color - PVD Gold 18k, Thickness - 1,2mm (16GA), ball size - 3mm

Color - Silver, Thickness - 1,2mm (16GA), ball size - 4mm

Color - PVD Gold 18k, Thickness - 1,2mm (16GA), ball size - 4mm

Color - Silver, Thickness - 1,6mm (14GA), ball size - 3mm

Color - PVD Gold 18k, Thickness - 1,6mm (14GA), ball size - 3mm

Color - Silver, Thickness - 1,6mm (14GA), ball size - 4mm

Color - PVD Gold 18k, Thickness - 1,6mm (14GA), ball size - 4mm



Snowflake v2

Reference : 1116

Labret not included Material: Implant Grade Titanium Stone Material: CZ

Color - Clear, Thickness - 1,2mm (16GA)

Color - PVD Gold 18k/Clear, Thickness - 1,2mm (16GA)



Round Marquise

Reference : 1344

Labret not included Material: Implant Grade Titanium Stone Material: CZ

Color - Clear, Thickness - 1,2mm (16GA)



Bee

Reference : 0845

Labret not included Material: Implant Grade Titanium

Color - Silver, Thickness - 1,2mm (16GA)

Color - PVD Gold 18k, Thickness - 1,2mm (16GA)



Colibri

Reference : 0941

Labret not included Material: Implant Grade Titanium

Color - Silver, Thickness - 1,2mm (16GA)

Color - PVD Gold 18k, Thickness - 1,2mm (16GA)



Polished 5

Reference : 0873

Labret not included Material: Implant Grade Titanium

Color - Silver, Thickness - 1,2mm (16GA)

Color - PVD Gold 18k, Thickness - 1,2mm (16GA)



Kite center

Reference : 1000

Labret not included Material: Implant Grade Titanium Stone Material: CZ

Color - Clear, Thickness - 1,2mm (16GA)

Color - Clear/Purple, Thickness - 1,2mm (16GA)

Color - PVD Gold 18k/Clear, Thickness - 1,2mm (16GA)



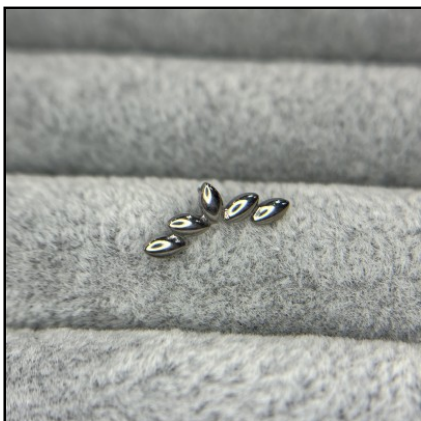
Shape CZ 4,5

Reference : 0972

Labret not included Material: Implant Grade Titanium Stone Material: CZ Threadless Pushin

Color - Clear

Color - PVD Gold 18k/Clear



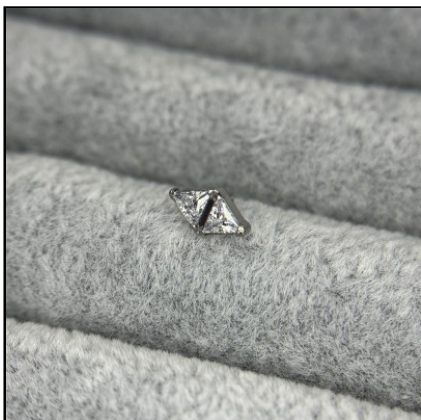
Polished 5

Reference : 0874

Labret not included Material: Implant Grade Titanium Threadless Pushin

Color - Silver

Color - PVD Gold 18k



Double Triangle CZ

Reference : 0798

Labret not included Material: Implant Grade Titanium Stone Material: CZ Threadless Pushin

Color - Clear

Color - PVD Gold 18k/Clear



Snowflake CZ

Reference : 1339

Labret not included Material: Implant Grade Titanium Stone Material: CZ

Color - Clear, Thickness - 1,2mm (16GA)

Color - PVD Gold 18k/Clear, Thickness - 1,2mm (16GA)



3 Kite cz top

Reference : 1354

Labret not included Material: Implant Grade Titanium Stone Material: CZ

Color - Clear, Thickness - 1,2mm (16GA)



Sword CZ

Reference : 1386

Labret not included Material: Implant Grade Titanium Stone Material: CZ

Color - Clear, Thickness - 1,2mm (16GA)

Color - PVD Gold 18k/Clear, Thickness - 1,2mm (16GA)



Spider CZ

Reference : 1391

Labret not included Material: Implant Grade Titanium Stone Material: CZ Internally threaded

Color - Clear, Thickness - 1,2mm (16GA)

Color - Clear/amethyst, Thickness - 1,2mm (16GA)

Color - Clear/Black, Thickness - 1,2mm (16GA)



Combined CZ Top

Reference : 1249

Labret not included Material: Implant Grade Titanium Stone Material: CZ

Color - Clear, Thickness - 1,2mm (16GA)

Color - Clear/VM, Thickness - 1,2mm (16GA)



Moon With CZ

Reference : 1221

Labret not included Material: Implant Grade Titanium Stone Material: CZ

Color - Clear, Thickness - 1,2mm (16GA)

Color - Clear/amethyst, Thickness - 1,2mm (16GA)

Color - PVD Gold 18k/Clear, Thickness - 1,2mm (16GA)



3 Marquise CZ

Reference : 1213

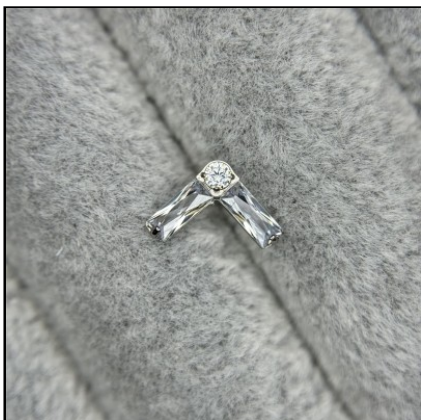
Labret not included Material: Implant Grade Titanium Stone Material: CZ

Color - Clear, Thickness - 1,2mm (16GA)

Color - Clear/pink, Thickness - 1,2mm (16GA)

Color - Clear/amethyst, Thickness - 1,2mm (16GA)

Color - PVD Gold 18k/Clear, Thickness - 1,2mm (16GA)



2 Rectangles CZ and Round CZ

Reference : 1305

Labret not included Material: Implant Grade Titanium Stone Material: CZ

Color - Clear, Thickness - 1,2mm (16GA)

Color - Clear/amethyst, Thickness - 1,2mm (16GA)

Color - PVD Gold 18k/Clear, Thickness - 1,2mm (16GA)



CZ Paved Pear With Pear CZ Center

Reference : 1281

Labret not included Material: Implant Grade Titanium Stone Material: CZ

Color - Clear, Thickness - 1,2mm (16GA)

Color - Clear/pink, Thickness - 1,2mm (16GA)

Color - Clear/amethyst, Thickness - 1,2mm (16GA)

Color - PVD Gold 18k/Clear, Thickness - 1,2mm (16GA)

Color - PVD Gold 18k/Amethyst, Thickness - 1,2mm (16GA)



Semi Precious Round Stones

Reference : 1267

Labret not included Material: Implant Grade Titanium Plating: PVD Stone Material: Natural Stone

Color - Amethyst, Thickness - 1,2mm (16GA)

Color - Turquoise, Thickness - 1,2mm (16GA)

Color - Green Aventurine, Thickness - 1,2mm (16GA)

Color - White Opal, Thickness - 1,2mm (16GA)

Color - Pink Opal, Thickness - 1,2mm (16GA)

Color - White Jade, Thickness - 1,2mm (16GA)



CZ Paved Triangle With Triangle CZ Center

Reference : 1282

Labret not included Material: Implant Grade Titanium Stone Material: CZ

Color - Clear/amethyst, Thickness - 1,2mm (16GA)



CZ Balls With Opal Center

Reference : 0513

Labret not included Material: Implant Grade Titanium Stone Material: Synthetic Opal + CZ

Color - OP38+Clear, Thickness - 1,2mm (16GA)



3 Marquise CZ Top

Reference : 0879

Labret not included Material: Implant Grade Titanium Stone Material: CZ

Color - Clear, Thickness - 1,2mm (16GA)

Color - Clear/pink, Thickness - 1,2mm (16GA)

Color - Clear/Aqua, Thickness - 1,2mm (16GA)

Color - PVD Gold 18k/Clear, Thickness - 1,2mm (16GA)

Color - Clear/amethyst, Thickness - 1,2mm (16GA)



Marquise CZ Mix

Reference : 1329

Labret not included Material: Implant Grade Titanium Plating: PVD Stone Material: CZ

Color - Clear, Thickness - 1,2mm (16GA)

Color - PVD Gold 18k/Clear, Thickness - 1,2mm (16GA)



Kite Top

Reference : 1040

Labret not included Material: Implant Grade Titanium Plating: PVD Stone Material: CZ

Color - Clear, Thickness - 1,2mm (16GA)

Color - PVD Gold 18k/Clear, Thickness - 1,2mm (16GA)

Color - Clear/pink, Thickness - 1,2mm (16GA)

Color - Clear/Aqua, Thickness - 1,2mm (16GA)



Oval Top CZ

Reference : 1038

Labret not included Material: Implant Grade Titanium Plating: PVD Stone Material: CZ

Color - Clear, Thickness - 1,2mm (16GA)

Color - PVD Gold 18k/Clear, Thickness - 1,2mm (16GA)



Marquise & Round Top

Reference : 0925

Labret not included Material: Implant Grade Titanium Plating: PVD Stone Material: CZ

Color - Clear, Thickness - 1,2mm (16GA)

Color - PVD Gold 18k/Clear, Thickness - 1,2mm (16GA)



4 Marquise Top

Reference : 0923

Labret not included Material: Implant Grade Titanium Plating: PVD Stone Material: CZ

Color - Clear, Thickness - 1,2mm (16GA)

Color - PVD Gold 18k/Clear, Thickness - 1,2mm (16GA)



3 Rectangle Top

Reference : 0888

Labret not included Material: Implant Grade Titanium Plating: PVD Stone Material: CZ

Color - Clear, Thickness - 1,2mm (16GA)



Round Tear Top

Reference : 0851

Labret not included Material: Implant Grade Titanium Plating: PVD Stone Material: CZ

Color - Clear, Thickness - 1,2mm (16GA)



CZ Branch

Reference : 1102

Labret not included Material: Implant Grade Titanium Plating: PVD Stone Material: CZ

Color - Clear, Thickness - 1,2mm (16GA)

Color - PVD Gold 18k/Clear, Thickness - 1,2mm (16GA)



CZ Alternate

Reference : 1186

Labret not included Material: Implant Grade Titanium Plating: PVD Stone Material: CZ

Color - Clear, Thickness - 1,2mm (16GA)

Color - Clear/pink, Thickness - 1,2mm (16GA)

Color - PVD Gold 18k/Clear, Thickness - 1,2mm (16GA)

Color - Purple (OP #52), Thickness - 1,2mm (16GA)



3 CZ round

Reference : 1180

Labret not included Material: Implant Grade Titanium Plating: PVD Stone Material: CZ

Color - Clear, Thickness - 1,2mm (16GA)

Color - Clear/pink, Thickness - 1,2mm (16GA)

Color - PVD Gold 18k/Clear, Thickness - 1,2mm (16GA)



Irregular moon top

Reference : 1142

Labret not included Material: Implant Grade Titanium Plating: PVD

Color - Silver, Thickness - 1,2mm (16GA)

Color - PVD Gold 18k, Thickness - 1,2mm (16GA)



2 Set Marquise

Reference : 1194

Labret not included Material: Implant Grade Titanium Plating: PVD Stone Material: CZ

Color - Clear, Thickness - 1,2mm (16GA)

Color - Clear/Aqua, Thickness - 1,2mm (16GA)

Color - Clear/pink, Thickness - 1,2mm (16GA)

Color - Clear/amethyst, Thickness - 1,2mm (16GA)

Color - PVD Gold 18k/Clear, Thickness - 1,2mm (16GA)

Color - Clear/VM, Thickness - 1,2mm (16GA)



Bezel CZ With Chain Dangle Top

Reference : 1238

Labret not included Material: Implant Grade Titanium Plating: PVD Stone Material: CZ

Color - Clear, Thickness - 1,2mm (16GA)

Color - PVD Gold 18k/Clear, Thickness - 1,2mm (16GA)



Bezel CZ With Chain Dangle Top

Reference : 1230

Labret not included Material: Implant Grade Titanium Plating: PVD Stone Material: CZ

Color - Clear, Thickness - 1,2mm (16GA)

Color - PVD Gold 18k/Clear, Thickness - 1,2mm (16GA)



5 CZ Fan Top

Reference : 1002

Labret not included Material: Implant Grade Titanium Plating: PVD Stone Material: CZ

Color - Clear, Thickness - 1,2mm (16GA)



Titanium 5 Prong Set CZ Stone Top

Reference : 0896

Labret not included Material: Implant Grade Titanium Plating: PVD Stone Material: CZ

Color - Clear, Thickness - 1,2mm (16GA)

Color - Clear/Aqua, Thickness - 1,2mm (16GA)

Color - Clear/amethyst, Thickness - 1,2mm (16GA)

Color - PVD Gold 18k/Clear, Thickness - 1,2mm (16GA)



Bezel Set 9 CZ Top

Reference : 0877

Labret not included Material: Implant Grade Titanium Plating: PVD Stone Material: CZ

Color - Clear, Thickness - 1,2mm (16GA)

Color - Clear/pink, Thickness - 1,2mm (16GA)

Color - Clear/Aqua, Thickness - 1,2mm (16GA)



Chain

Reference : 1110

Labret not included Material: Implant Grade Titanium Plating: PVD

Lenght - 35mm, Color - Silver

Lenght - 40mm, Color - Silver

Lenght - 45mm, Color - Silver

Lenght - 40mm, Color - PVD Gold 18k

Lenght - 45mm, Color - PVD Gold 18k

Lenght - 35mm, Color - PVD Gold 18k



4 Marquise CZ Leaf Shape Top

Reference : 1100

Labret not included Material: Implant Grade Titanium Plating: PVD Stone Material: CZ

Color - Clear, Thickness - 1,2mm (16GA)

Color - Clear/pink, Thickness - 1,2mm (16GA)

Color - PVD Gold 18k/Clear, Thickness - 1,2mm (16GA)



Marquise CZ and Round CZ Alternate Top

Reference : 1094

Labret not included Material: Implant Grade Titanium Plating: PVD Stone Material: CZ

Color - Clear, Thickness - 1,2mm (16GA)

Color - PVD Gold 18k/Clear, Thickness - 1,2mm (16GA)



3 Prong Set Marquise CZ Arrange By Size Top

Reference : 1092

Labret not included Material: Implant Grade Titanium Plating: PVD Stone Material: CZ

Color - Clear, Thickness - 1,2mm (16GA)

Color - PVD Gold 18k/Clear, Thickness - 1,2mm (16GA)



3 Prong Set Marquise CZ Curved Fan Top

Reference : 1090

Labret not included Material: Implant Grade Titanium Plating: PVD Stone Material: CZ

Color - Clear, Thickness - 1,2mm (16GA)

Color - Clear/pink, Thickness - 1,2mm (16GA)

Color - Clear/AB, Thickness - 1,2mm (16GA)

Color - PVD Gold 18k/Clear, Thickness - 1,2mm (16GA)



Titanium 5 CNC Set Round CZ With 5 Chians D...

Reference : 1174

Labret not included Material: Implant Grade Titanium Plating: PVD Stone Material: CZ

Color - Clear, Thickness - 1,2mm (16GA)



Titanium Bezel Set Semi Precious Stones Disk ...

Reference : 1196

Labret not included Material: Implant Grade Titanium Plating: PVD Stone Material: Natural Stone

Color - White Jade, Thickness - 1,2mm (16GA)

Color - Turquoise, Thickness - 1,2mm (16GA)

Color - Rose QZ, Thickness - 1,2mm (16GA)

Color - Amethyst, Thickness - 1,2mm (16GA)

Color - Black Onyx, Thickness - 1,2mm (16GA)



Titanium CNC Set Nature Marquise Stone Top

Reference : 1195

Labret not included Material: Implant Grade Titanium Plating: PVD Stone Material: Natural Stone

Color - White Shell, Thickness - 1,2mm (16GA)

Color - White Jade, Thickness - 1,2mm (16GA)

Color - Turquoise, Thickness - 1,2mm (16GA)

Color - Green Onyx, Thickness - 1,2mm (16GA)

Color - Green Aventurine, Thickness - 1,2mm (16GA)

Color - Amethyst, Thickness - 1,2mm (16GA)

Color - Rose QZ, Thickness - 1,2mm (16GA)



Irregular Hammering Rectangle Top

Reference : 1138

Labret not included Material: Implant Grade Titanium

Color - Silver, Thickness - 1,2mm (16GA)

Color - PVD Gold 18k, Thickness - 1,2mm (16GA)



Irregular Hammering Oval Top

Reference : 1136

Labret not included Material: Implant Grade Titanium

Color - Silver, Thickness - 1,2mm (16GA)

Color - PVD Gold 18k, Thickness - 1,2mm (16GA)



Irregular Hammering Square Top

Reference : 1126

Labret not included Material: Implant Grade Titanium Plating: PVD Stone Material: CZ

Color - Silver, Thickness - 1,2mm (16GA)

Color - PVD Gold 18k, Thickness - 1,2mm (16GA)



5 Set Marquise CZ With Dangle Chain Top

Reference : 1107

Labret not included Material: Implant Grade Titanium Plating: PVD Stone Material: CZ

Color - Clear, Thickness - 1,2mm (16GA)

Color - PVD Gold 18k/Clear, Thickness - 1,2mm (16GA)



17 Bezel Set CZ In Curved Line Top

Reference : 1112

Labret not included Material: Implant Grade Titanium Plating: PVD Stone Material: CZ

Color - Clear, Thickness - 1,2mm (16GA)



Irregular Hammering Round Top

Reference : 1144

Labret not included Material: Implant Grade Titanium Plating: PVD

Color - Silver, Thickness - 1,2mm (16GA), ball size - 3mm

Color - PVD Gold 18k, Thickness - 1,2mm (16GA)



Irregular Heart Top

Reference : 1140

Labret not included Material: Implant Grade Titanium Plating: PVD

Color - Silver, Thickness - 1,2mm (16GA)

Color - PVD Gold 18k, Thickness - 1,2mm (16GA)



Irregular Hammering Triangle Top

Reference : 1128

Labret not included Material: Implant Grade Titanium Plating: PVD

Color - Silver, Thickness - 1,2mm (16GA)

Color - PVD Gold 18k, Thickness - 1,2mm (16GA)



Irregular Hammer Point Rectangle With Chain ...

Reference : 1104

Labret not included Material: Implant Grade Titanium Plating: PVD

Color - Silver, Thickness - 1,2mm (16GA)

Color - PVD Gold 18k, Thickness - 1,2mm (16GA)



3 Set Opal Stone Top

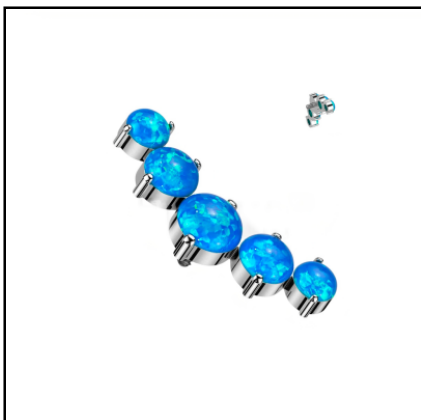
Reference : 0892

Labret not included Material: Implant Grade Titanium Plating: PVD Stone Material: Opal

Color - White (OP #17), Thickness - 1,2mm (16GA)

Color - Rose (OP #22), Thickness - 1,2mm (16GA)

Color - Blue (OP #05), Thickness - 1,2mm (16GA)



5 Set Opal Stone Top

Reference : 0894

Labret not included Material: Implant Grade Titanium Plating: PVD Stone Material: Opal

Color - White (OP #17), Thickness - 1,2mm (16GA)

Color - Rose (OP #22), Thickness - 1,2mm (16GA)

Color - Blue (OP #05), Thickness - 1,2mm (16GA)



7 Prong Set Marquise CZ Tri-bead Cluster

Reference : 1051

Labret not included Material: Implant Grade Titanium Plating: PVD Stone Material: CZ

Color - Clear, Thickness - 1,2mm (16GA)

Color - Clear/pink, Thickness - 1,2mm (16GA)

Color - PVD Gold 18k/Clear, Thickness - 1,2mm (16GA)



7 Set Marquise CZ

Reference : 1050

Labret not included Material: Implant Grade Titanium Plating: PVD Stone Material: CZ

Color - Clear, Thickness - 1,2mm (16GA)

Color - Clear/pink, Thickness - 1,2mm (16GA)

Color - PVD Gold 18k/Clear, Thickness - 1,2mm (16GA)



6 Prong Set Marquise CZ Tri-bead Cluster

Reference : 1049

Labret not included Material: Implant Grade Titanium Plating: PVD Stone Material: CZ

Color - Clear, Thickness - 1,2mm (16GA)

Color - Clear/pink, Thickness - 1,2mm (16GA)

Color - PVD Gold 18k/Clear, Thickness - 1,2mm (16GA)



Internally 6 Set Marquise CZ

Reference : 1048

Labret not included Material: Implant Grade Titanium Plating: PVD Stone Material: CZ

Color - Clear, Thickness - 1,2mm (16GA)

Color - Clear/pink, Thickness - 1,2mm (16GA)

Color - PVD Gold 18k/Clear, Thickness - 1,2mm (16GA)



Internally 5 Prong Set Marquise CZ Tri-bead Cl...

Reference : 1047

Labret not included Material: Implant Grade Titanium Plating: PVD Stone Material: CZ

Color - Clear, Thickness - 1,2mm (16GA)

Color - Clear/pink, Thickness - 1,2mm (16GA)

Color - PVD Gold 18k/Clear, Thickness - 1,2mm (16GA)



5 Set Marquise CZ

Reference : 1046

Labret not included Material: Implant Grade Titanium Plating: PVD Stone Material: CZ

Color - Clear, Thickness - 1,2mm (16GA)

Color - Clear/pink, Thickness - 1,2mm (16GA)

Color - PVD Gold 18k/Clear, Thickness - 1,2mm (16GA)



4 Prong Set Marquise CZ Tri-bead Cluster

Reference : 1045

Labret not included Material: Implant Grade Titanium Plating: PVD Stone Material: CZ

Color - Clear, Thickness - 1,2mm (16GA)

Color - Clear/pink, Thickness - 1,2mm (16GA)

Color - PVD Gold 18k/Clear, Thickness - 1,2mm (16GA)



4 Set Marquise CZ

Reference : 1044

Labret not included Material: Implant Grade Titanium Plating: PVD Stone Material: CZ

Color - Clear, Thickness - 1,2mm (16GA)

Color - Clear/pink, Thickness - 1,2mm (16GA)

Color - PVD Gold 18k/Clear, Thickness - 1,2mm (16GA)



5 CZ Set Curve Top

Reference : 0540

Labret not included Material: Implant Grade Titanium Stone Material: CZ

Color - Clear, Thickness - 1,2mm (16GA)

Color - Clear/pink, Thickness - 1,2mm (16GA)

Color - Clear/Aqua, Thickness - 1,2mm (16GA)

Color - Clear/amethyst, Thickness - 1,2mm (16GA)

Color - PVD Gold 18k/Clear, Thickness - 1,2mm (16GA)



Set Curve Top

Reference : 0538

Labret not included Material: Implant Grade Titanium Plating: PVD Stone Material: CZ & Opal

Color - Clear, Thickness - 1,2mm (16GA)

Color - Clear/pink, Thickness - 1,2mm (16GA)

Color - Clear/Aqua, Thickness - 1,2mm (16GA)

Color - OP05+Clear, Thickness - 1,2mm (16GA)

Color - OP17+Clear, Thickness - 1,2mm (16GA)

Color - PVD Gold 18k/Clear, Thickness - 1,2mm (16GA)



Threadless Push Pin Marquise Top

Reference : 0630

Labret not included Material: Implant Grade Titanium Plating: PVD Stone Material: CZ

Color - Clear

Color - PVD Gold 18k/Clear

Color - PVD Black/Clear



Triangle Top

Reference : TA-0024

Labret not included Material: Implant Grade Titanium Plating: PVD

Color - Silver, Thickness - 1,2mm (16GA)

Color - PVD Gold 18k, Thickness - 1,2mm (16GA)



Threadless Push Pin Cz

Reference : 0412

Labret not included Material: Implant Grade Titanium Stone Material: CZ Threadless Pushin

Color - Clear, ball size - 2mm

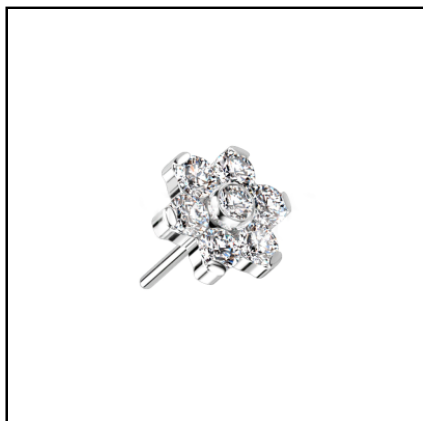
Color - Clear, ball size - 3mm

Color - PVD Gold 18k/Clear, ball size - 2mm

Color - PVD Gold 18k/Clear, ball size - 3mm

Color - Clear, ball size - 2.5mm

Color - PVD Gold 18k/Clear, ball size - 2.5mm



Threadless Push Pin Flowe cz

Reference : 0413

Labret not included Material: Implant Grade Titanium Stone Material: CZ Threadless Pushin

Color - Clear, ball size - 5mm

Color - PVD Gold 18k/Clear, ball size - 5mm



Threadless Push Pin Crescent Moon

Reference : 0404

Labret not included Material: Implant Grade Titanium Threadless Pushin

Color - Silver, ball size - 3mm

Color - PVD Gold 18k, ball size - 3mm



3 Bezel Set Rectangles Opal Stone Top

Reference : 0902

Labret not included Material: Implant Grade Titanium Stone Material: Synthetic Opal

Color - White (OP #17), Thickness - 1,2mm (16GA)

Color - Blue (OP #05), Thickness - 1,2mm (16GA)

Color - Rose (OP #22), Thickness - 1,2mm (16GA)

Color - Purple (OP #52), Thickness - 1,2mm (16GA)



3 Bezel Set Rectangles CZ Top

Reference : 0900

Labret not included Material: Implant Grade Titanium Stone Material: CZ

Color - Clear, Thickness - 1,2mm (16GA)

Color - Clear/pink, Thickness - 1,2mm (16GA)

Color - PVD Gold 18k/Clear, Thickness - 1,2mm (16GA)



Marquise 5 Gem Curved Top

Reference : 0979

Labret not included Material: Implant Grade Titanium Stone Material: CZ

Color - Clear, Thickness - 1,2mm (16GA)

Color - Clear/pink, Thickness - 1,2mm (16GA)

Color - Clear/Purple, Thickness - 1,2mm (16GA)

Color - PVD Gold 18k/Clear, Thickness - 1,2mm (16GA)



Rectangle CZ Top

Reference : 0931

Labret not included Material: Implant Grade Titanium Stone Material: CZ

Color - Clear, Thickness - 1,2mm (16GA)

Color - Clear/pink, Thickness - 1,2mm (16GA)

Color - Clear/Purple, Thickness - 1,2mm (16GA)

Color - PVD Gold 18k/Clear, Thickness - 1,2mm (16GA)



9 Set CZ Stone Top

Reference : 0898

Labret not included Material: Implant Grade Titanium Stone Material: CZ

Color - Clear, Thickness - 1,2mm (16GA)

Color - Clear/pink, Thickness - 1,2mm (16GA)

Color - Clear/Aqua, Thickness - 1,2mm (16GA)

Color - PVD Gold 18k/Clear, Thickness - 1,2mm (16GA)



5 Round Bezel Set CZ Curve Only Top

Reference : 0121

Labret not included Material: Implant Grade Titanium Stone Material: CZ

Color - Clear, Thickness - 1,2mm (16GA)

Color - Clear/pink, Thickness - 1,2mm (16GA)

Color - Clear/Purple, Thickness - 1,2mm (16GA)

Color - Clear/VM, Thickness - 1,2mm (16GA)



Top moon

Reference : TA-0022

Labret not included Material: Implant Grade Titanium 1.2 (16 GA) 1.6 (14GA)

Color - Silver, Thickness - 1,2mm (16GA)

Color - PVD Gold 18k, Thickness - 1,2mm (16GA)



Top heart

Reference : TA-0019

Labret not included Material: Implant Grade Titanium 1.2 (16 GA) 1.6 (14GA)

Color - Silver, Thickness - 1,2mm (16GA)

Color - PVD Gold 18k, Thickness - 1,2mm (16GA)



Top star

Reference : TA-0017

Labret not included Material: Implant Grade Titanium 1.2 (16 GA) 1.6 (14GA)

Color - Silver, Thickness - 1,2mm (16GA)

Color - PVD Gold 18k, Thickness - 1,2mm (16GA)



Flat Bezel Set Crystal Top

Reference : TA-0015

Labret not included Material: Implant Grade Titanium Stone Material: CZ

Color - Clear, Thickness - 1,2mm (16GA), ball size - 3mm

Color - Clear, Thickness - 1,6mm (14GA), ball size - 3mm

Color - Clear, Thickness - 1,2mm (16GA), ball size - 4mm

Color - Clear, Thickness - 1,6mm (14GA), ball size - 4mm

Color - Clear, Thickness - 1,2mm (16GA), ball size - 5mm

Color - Clear, Thickness - 1,6mm (14GA), ball size - 5mm

Color - Clear/AB, Thickness - 1,2mm (16GA), ball size - 3mm



Trinity Nose

Reference : 0280

Material: Implant Grade Titanium Plating: PVD Stone Material: CZ

Lenght - 6mm (1/4"), Color - Clear, Thickness - 0,8mm (20GA), ball size - 5mm



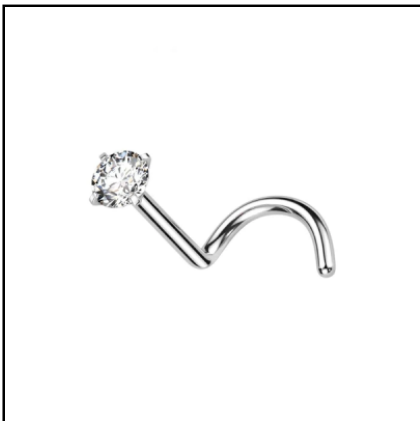
Nose Trinity

Reference : 0283

Material: Implant Grade Titanium Plating: PVD Stone Material: CZ

Lenght - 6mm (1/4"), Color - White (OP #17), Thickness - 0,8mm (20GA)

Lenght - 6mm (1/4"), Color - Blue (OP #05), Thickness - 0,8mm (20GA)



Nose Screw

Reference : 0168

Material: Implant Grade Titanium Plating: PVD Stone Material: CZ

Lenght - 6mm (1/4"), Color - Clear, Thickness - 0,8mm (20GA), ball size - 2mm

Lenght - 6mm (1/4"), Color - PVD Gold 18k/Clear, Thickness - 0,8mm (20GA), ball size - 2mm

Lenght - 6mm (1/4"), Color - Clear, Thickness - 0,8mm (20GA), ball size - 2.5mm

Lenght - 6mm (1/4"), Color - PVD Gold 18k/Clear, Thickness - 0,8mm (20GA), ball size - 2.5mm

Lenght - 6mm (1/4"), Color - Clear, Thickness - 0,8mm (20GA), ball size - 3mm

Lenght - 6mm (1/4"), Color - PVD Gold 18k/Clear, Thickness - 0,8mm (20GA), ball size - 3mm



Nose Set Marquise CZ

Reference : 0859

Material: Implant Grade Titanium Stone Material: CZ

Lenght - 6mm (1/4"), Color - Clear, Thickness - 0,8mm (20GA)

Lenght - 6mm (1/4"), Color - PVD Gold 18k/Clear, Thickness - 0,8mm (20GA)



CZ Nose Screw

Reference : 0050

Material: Implant Grade Titanium Stone Material: CZ

Lenght - 6mm (1/4"), Color - Clear, Thickness - 0,8mm (20GA), ball size - 2mm
Lenght - 6mm (1/4"), Color - Clear/pink, Thickness - 0,8mm (20GA), ball size - 2mm
Lenght - 6mm (1/4"), Color - Clear/Purple, Thickness - 0,8mm (20GA), ball size - 2mm
Lenght - 6mm (1/4"), Color - Clear/Aqua, Thickness - 0,8mm (20GA), ball size - 2mm
Lenght - 6mm (1/4"), Color - Clear/Blue, Thickness - 0,8mm (20GA), ball size - 2mm
Lenght - 6mm (1/4"), Color - PVD Gold 18k/Clear, Thickness - 0,8mm (20GA), ball size - 2mm



Dome Nose Screw

Reference : 0273

Material: Implant Grade Titanium 2mm top

Lenght - 6mm (1/4"), Color - PVD Gold 18k, Thickness - 0,8mm (20GA)
Lenght - 6mm (1/4"), Color - Silver, Thickness - 0,8mm (20GA)
Lenght - 6mm (1/4"), Color - PVD Black, Thickness - 0,8mm (20GA)



Ball Nose Screw

Reference : 0272

Material: Implant Grade Titanium 2mm ball

Lenght - 6mm (1/4"), Color - PVD Gold 18k, Thickness - 0,8mm (20GA)
Lenght - 6mm (1/4"), Color - Silver, Thickness - 0,8mm (20GA)
Lenght - 6mm (1/4"), Color - Silver, Thickness - 1mm (18GA)



3 Hole Dermal Anchor

Reference : TA-0010

Material: Implant Grade Titanium 1.2 (16 GA) 1.6 (14GA)

Thickness - 1,2mm (16GA), Height - 2.5mm

Thickness - 1,2mm (16GA), Height - 3mm

Thickness - 1,6mm (14GA), Height - 2.5mm

Thickness - 1,6mm (14GA), Height - 3mm



Flat Bezel Set Crystal Top

Reference : TA-0015

Labret not included Material: Implant Grade Titanium Stone Material: CZ

Color - Clear, Thickness - 1,2mm (16GA), ball size - 3mm

Color - Clear, Thickness - 1,6mm (14GA), ball size - 3mm

Color - Clear, Thickness - 1,2mm (16GA), ball size - 4mm

Color - Clear, Thickness - 1,6mm (14GA), ball size - 4mm

Color - Clear, Thickness - 1,2mm (16GA), ball size - 5mm

Color - Clear, Thickness - 1,6mm (14GA), ball size - 5mm

Color - Clear/AB, Thickness - 1,2mm (16GA), ball size - 3mm

Nipple



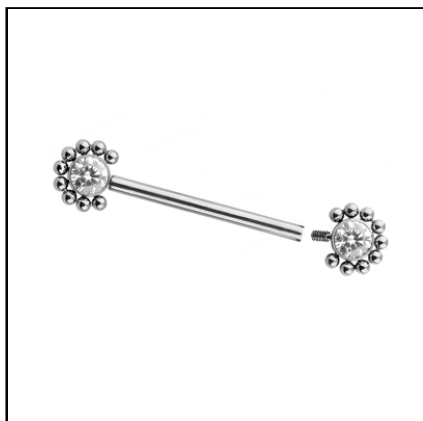
Nipple CZ Ring

Reference : 1535

Material: Implant Grade Titanium Stone Material: CZ

Lenght - 12mm (1/2"), Color - Clear, Thickness - 1,6mm (14GA)

Lenght - 12mm (1/2"), Color - PVD Gold 18k/Clear, Thickness - 1,6mm (14GA)

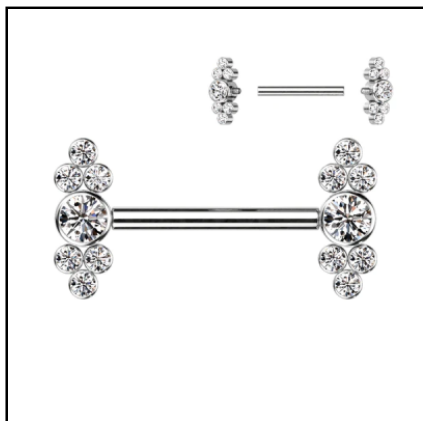


CZ and Surrounding Ball Cluster Nipple

Reference : 0500

Material: Implant Grade Titanium Plating: PVD Stone Material: CZ

Lenght - 14mm (9/16"), Color - Silver, Thickness - 1,6mm (14GA), ball size - 4mm

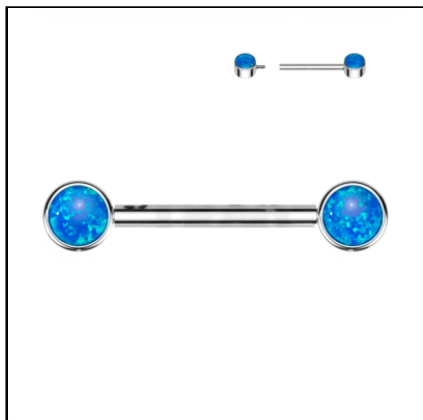


Barbells with CZ Bezel Set

Reference : 0721

Material: Implant Grade Titanium Stone Material: CZ

Lenght - 14mm (9/16"), Color - Clear, Thickness - 1,6mm (14GA)



Nipple Barbell With Opal Bezel Set

Reference : 0130

Material: Implant Grade Titanium Stone Material: Synthetic Opal

Lenght - 12mm (1/2"), Color - White (OP #17), Thickness - 1,6mm (14GA), ball size - 5mm

Lenght - 12mm (1/2"), Color - Blue (OP #05), Thickness - 1,6mm (14GA), ball size - 5mm



Nipple Barbell With Bezel Set CZ Ends

Reference : 0129

Material: Implant Grade Titanium Stone Material: CZ

Lenght - 12mm (1/2"), Color - Clear, Thickness - 1,6mm (14GA), ball size - 5mm
Lenght - 14mm (9/16"), Color - Clear, Thickness - 1,6mm (14GA), ball size - 5mm
Lenght - 12mm (1/2"), Color - Clear/AB, Thickness - 1,6mm (14GA), ball size - 5mm
Lenght - 12mm (1/2"), Color - Clear/Aqua, Thickness - 1,6mm (14GA), ball size - 5mm
Lenght - 12mm (1/2"), Color - Clear/Purple, Thickness - 1,6mm (14GA), ball size - 5mm
Lenght - 12mm (1/2"), Color - Clear/VM, Thickness - 1,6mm (14GA), ball size - 5mm
Lenght - 12mm (1/2"), Color - Clear/pink, Thickness - 1,6mm (14GA), ball size - 5mm



Nipple Barbell With Set CZ and Balls

Reference : 0085

Material: Implant Grade Titanium Plating: PVD Stone Material: CZ

Lenght - 14mm (9/16"), Color - Clear, Thickness - 1,6mm (14GA)



Nipple Barbell Opal

Reference : 0082

Material: Implant Grade Titanium Stone Material: Synthetic Opal

Lenght - 14mm (9/16"), Color - White (OP #17), Thickness - 1,6mm (14GA)
Lenght - 14mm (9/16"), Color - Blue (OP #05), Thickness - 1,6mm (14GA)



Nipple Barbell With 5 Bezel Set CZ

Reference : 0081

Material: Implant Grade Titanium Stone Material: CZ

Lenght - 14mm (9/16"), Color - Clear, Thickness - 1,6mm (14GA)

